

File D:\DATA\A02\RS-XL88-04619-HPLCA004.D

Injection Date : 28-Oct-15, 08:28:29

Sample Name : XL880, 04

Acq. Operator : HPLCA004

Spec. Reported : MS Integration

Acq. Method : C:\Chem32\1\METHODS\2-HPLC-15MIN.M

Analysis Method : C:\Chem32\1\METHODS\2-HPLC-15MIN.M

Sample Info : Easy-Access Method: '2-HPLC-15min'

Method Info : Mobile Phase: A: water (0.01%TFA) B: ACN (0.01%TFA)

Gradient: 0min 5%B, 3min 5%B, 10min 95%B, 15min 95%B

Flow Rate: 1.2 ml/min

Column: Eclipse XDB-C18, 4.6*150mm, 5um

Oven Temperature: 40 C

Tgt Mass (EZX) :

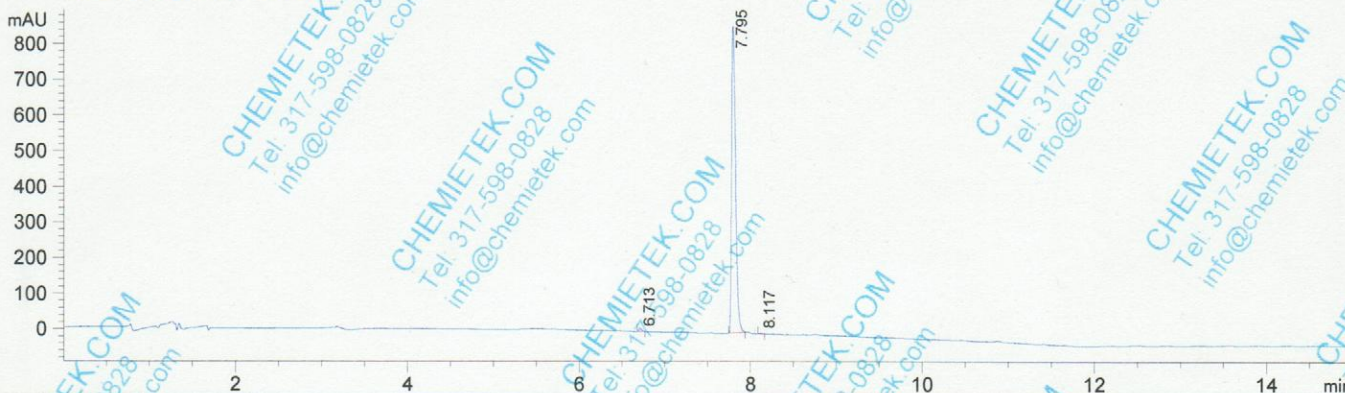
Location : P1-E-04

Inj : 0

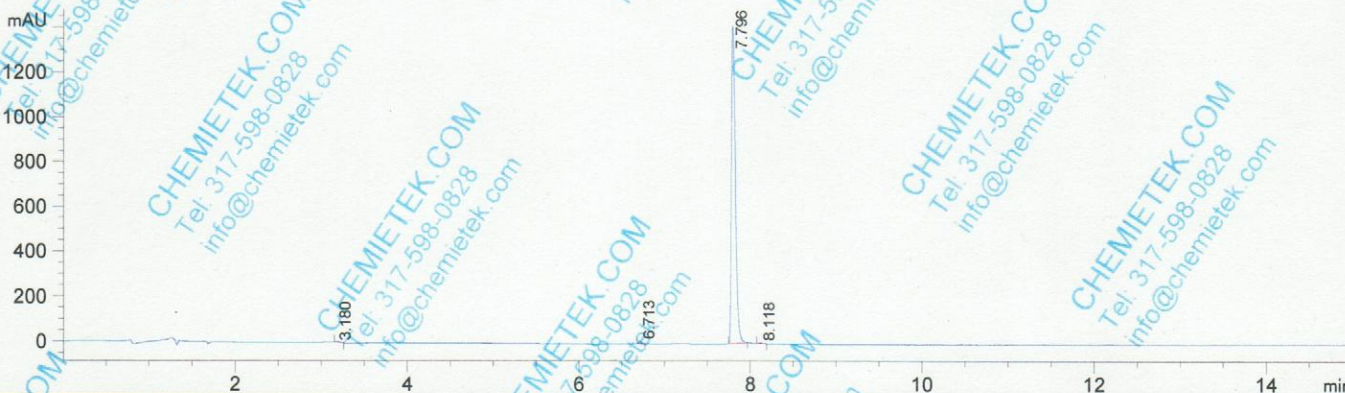
Inj Volume : 4 ul



DAD1 A, Sig=214,4 Ref=off



DAD1 B, Sig=254,4 Ref=off



Integration Results for DAD1 A, Sig=214,4 Ref=off

RetTim	Width	Area	Height	Area%
6.71	0.03	19.50	9.34	0.69
7.80	0.05	2799.58	861.75	99.12
8.12	0.03	5.45	2.42	0.19

Integration Results for DAD1 B, Sig=254,4 Ref=off

RetTim	Width	Area	Height	Area%
3.18	0.04	14.77	4.26	0.31
6.71	0.03	23.59	10.71	0.50
7.80	0.05	4666.27	1417.13	99.03
8.12	0.04	7.19	3.10	0.15

