

Tgt Mass(EZX) : 525.00

Sample Name : odan  
 Acq. Operator : Default  
 Spec. Reported : MS Integration

Inj Volume : 5 ul

Sample Info : 525.00

Method Info : Mobile Phase : A: water (10mM NH<sub>4</sub>HCO<sub>3</sub>) B: Acetonitrile  
 Gradient : 5%B for 0.2min, increase to 95%B within 1.8min,  
 95%B for 3min, back to 5%B within 0.01min.

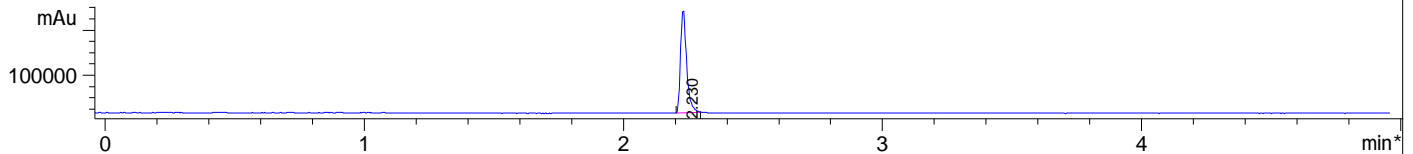
Flow Rate : 1.8mL/min

Column : XBridge C18 ,4.6\*50mm, 3.5um

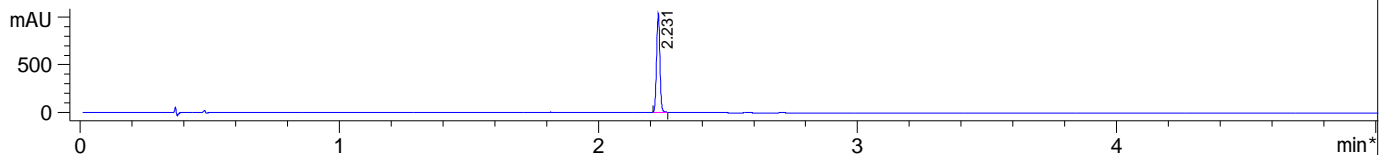
Oven Temperature : 50 C



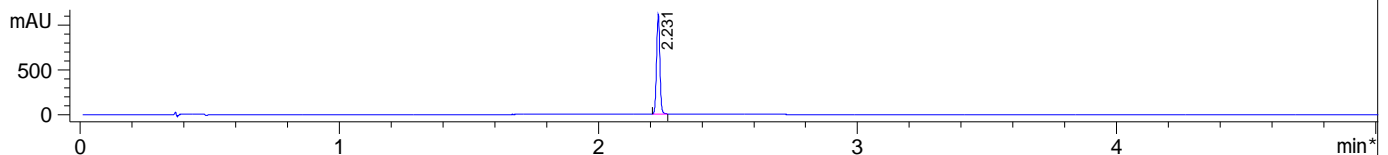
\*ADC1 A, ELSD



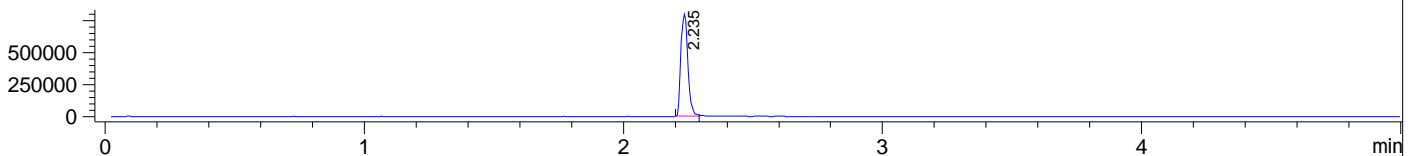
\*DAD1 A, Sig=214,4 Ref=off



\*DAD1 B, Sig=254,4 Ref=off



Ion 526, MSD1 526, Target Mass 525 +H Positive, EIC=525.7:526.7



Integration Results for ADC1 A, ELSD

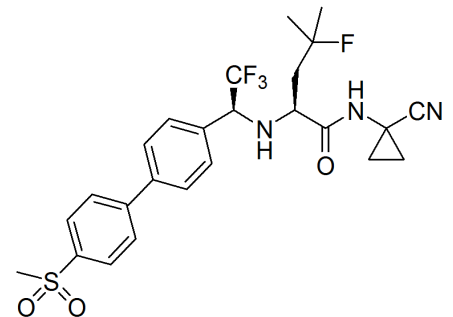
RetTim	Width	Area	Height	Area%
2.23	0.02	73410.27	45506.86	100.00

Integration Results for DAD1 A, Sig=214,4 Ref=off

RetTim	Width	Area	Height	Area%
2.23	0.01	892.51	1038.13	100.00

Integration Results for DAD1 B, Sig=254,4 Ref=off

RetTim	Width	Area	Height	Area%
2.23	0.01	950.35	1113.29	100.00



Ret. Time: 2.24

