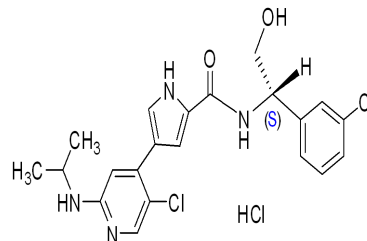


CHEMIETEK Chiral HPLC Report

Injection Info

Injection Volume 1
Co-Solvent MeOH(0.2%Methanol Ammanial)
Column AS-H (4.6*250*5um)
Sample ULixertinib-HCl LOT 02
Sample Well P1: 7C
Column Temperature 38
CO2 Flow Rate 2.25
Co-Solvent Flow Rate 0.75
Co-Solvent % 25
Total Flow 3
Front Pressure 174
Back Pressure 121
Pressure Drop 53
PDA Start Wavelength 214
PDA Stop Wavelength 359



Peak Info

Number	RT (min)	Area	Area %	Height
1	3.37	6350.891	100	714.3236

Total Absorbance

