



Sample Name : MIK665(S64315)-02

Location : P2-B-07

Acq. Operator : T245-Monitor

Inj : 0

Spec. Reported : MS Integration

Inj Volume : 2 ul

Acq. Method : D:\METHODS\2-HPLC-15MIN.M

Analysis Method : D:\METHODS\2-HPLC-15MIN.M

Sample Info : Easy-Access Method: '2-HPLC.M'

Method Info : Mobile Phase: A: water(0.01%TFA) B: ACN(0.01%TFA)

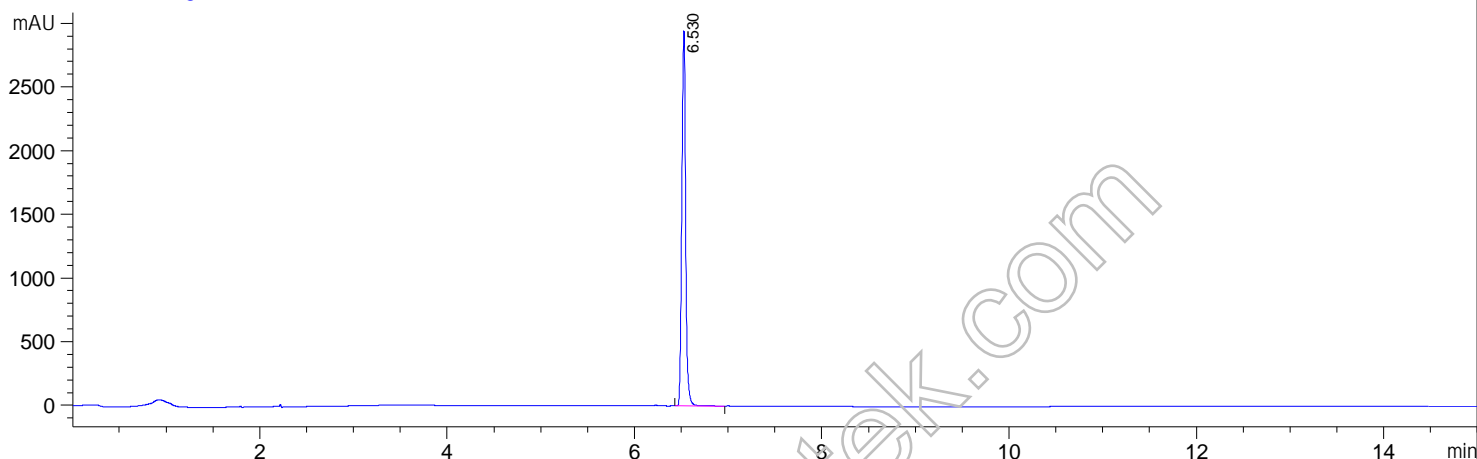
Gradient: 5% increase to 95%B within 7.5 min, 95%B for 7.5 min.

Flow Rate: 1.0ml/min

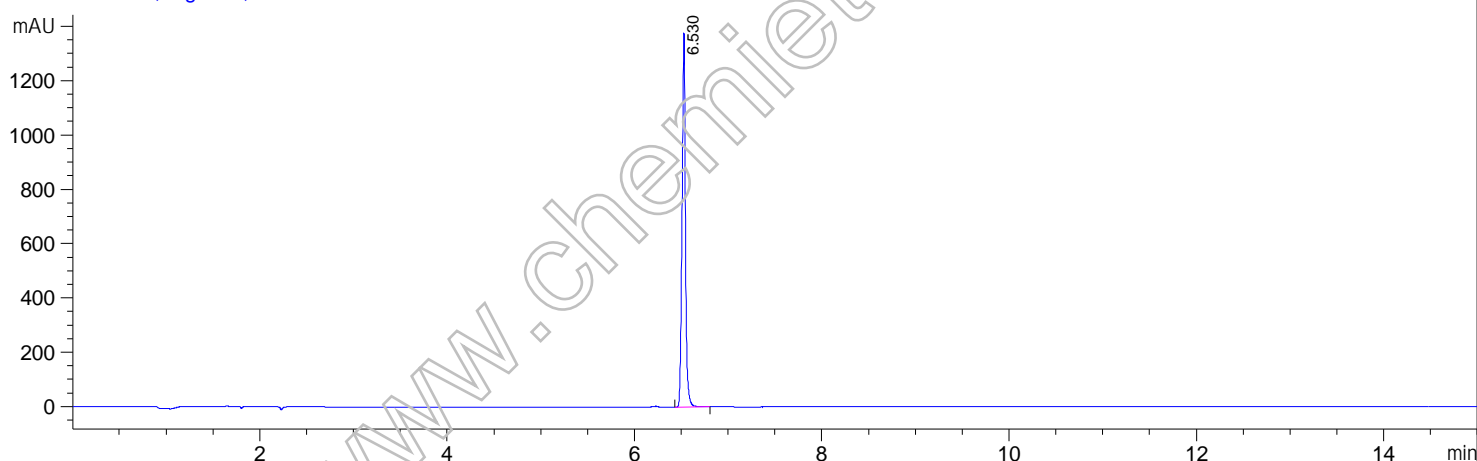
Column:Sunfire C18,4.6*150mm,3.5um

Column Temperature: 45 C

DAD1 A, Sig=214,4 Ref=off



DAD1 B, Sig=254,4 Ref=off



Integration Results for DAD1 A, Sig=214,4 Ref=off

RetTim	Width	Area	Height	Area%
6.53	0.04	8383.17	2945.42	100.00

Integration Results for DAD1 B, Sig=254,4 Ref=off

RetTim	Width	Area	Height	Area%
6.53	0.04	3447.84	1377.05	100.00

