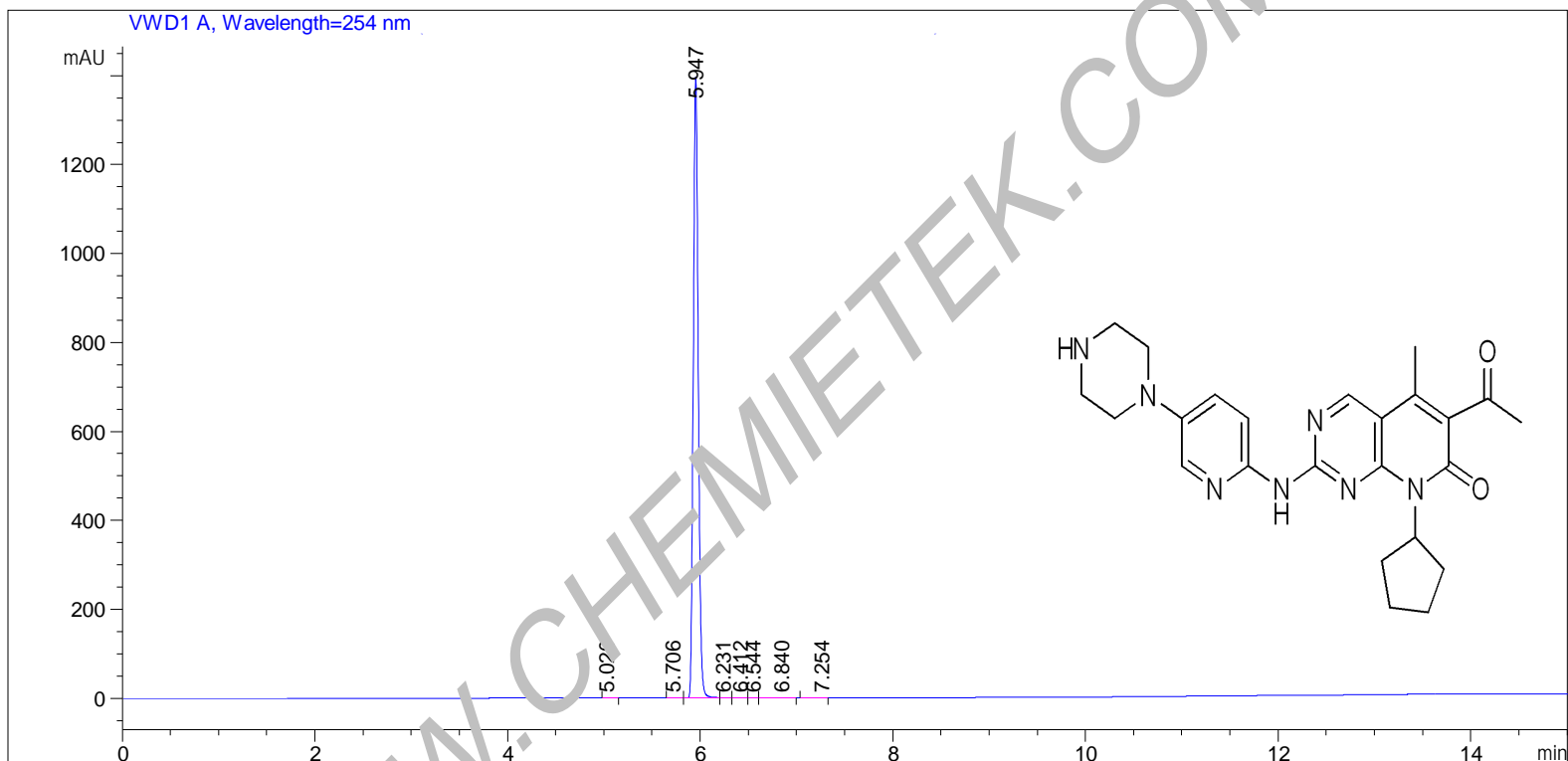




=====

Acq. Operator : SYSTEM	Seq. Line : 2
Acq. Instrument : Agilent HPLC	Location : 51
Injection Date : 2/27/2019 10:48:05 AM	Inj : 1
	Inj Volume : 5.000 µl
Different Inj Volume from Sample Entry! Actual Inj Volume : 3.000 µl	



=====
Area Percent Report
=====

Sorted By : Signal
Multiplier : 1.0000
Dilution : 1.0000
Use Multiplier & Dilution Factor with ISTDs

Signal 1: VWD1 A, Wavelength=254 nm

Peak #	RetTime [min]	Type	Width [min]	Area [mAU*s]	Height [mAU]	Area %
1	5.020	MM	0.1117	1.24115	1.85272e-1	0.0252
2	5.706	MF	0.0714	4.34991	1.01535	0.0882
3	5.947	FM	0.0585	4906.44238	1397.41858	99.5396
4	6.231	FM	0.0802	4.25014	8.83726e-1	0.0862
5	6.412	FM	0.1045	3.84239	6.12604e-1	0.0780
6	6.544	FM	0.0919	1.02698	1.86252e-1	0.0208
7	6.840	FM	0.1867	6.83565	6.10325e-1	0.1387
8	7.254	MM	0.1118	1.14630	1.70900e-1	0.0233

Totals : 4929.13490 1401.08301

=====
*** End of Report ***

WWW.CHEMIETEK.COM