

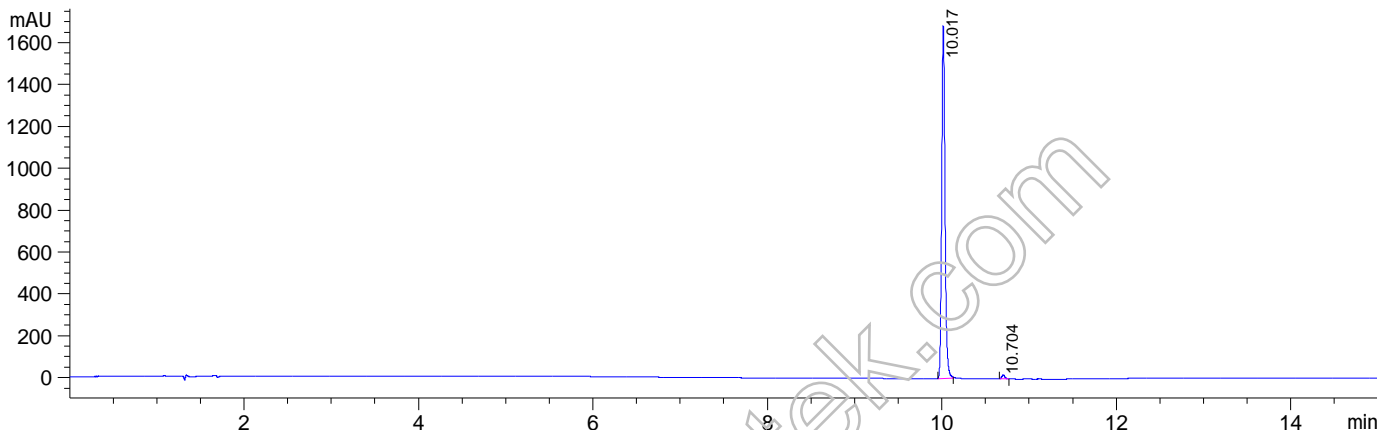
File D:\DATA\A02\RS-MLN-00604-HPLCA004.D

Sample Name : MLN8237, 02
 Acq. Operator : HPLCA004
 Spec. Reported : MS Integration
 Acq. Method : C:\Chem32\1\METHODS\2-HPLC-15MIN-UV220.M
 Analysis Method : C:\Chem32\1\METHODS\2-HPLC-15MIN-UV220.M
 Sample Info : Default
 Method Info : Mobile Phase: A: water(0.01%TFA) B: ACN(0.01%TFA)
 Gradient: 0min 5%B,3min 5%B,10min 95%B,15min 95%B
 Flow Rate: 1.2 ml/min
 Column: Eclipse XDB-C18,4.6*150mm,5um
 Oven Temperature: 40 C

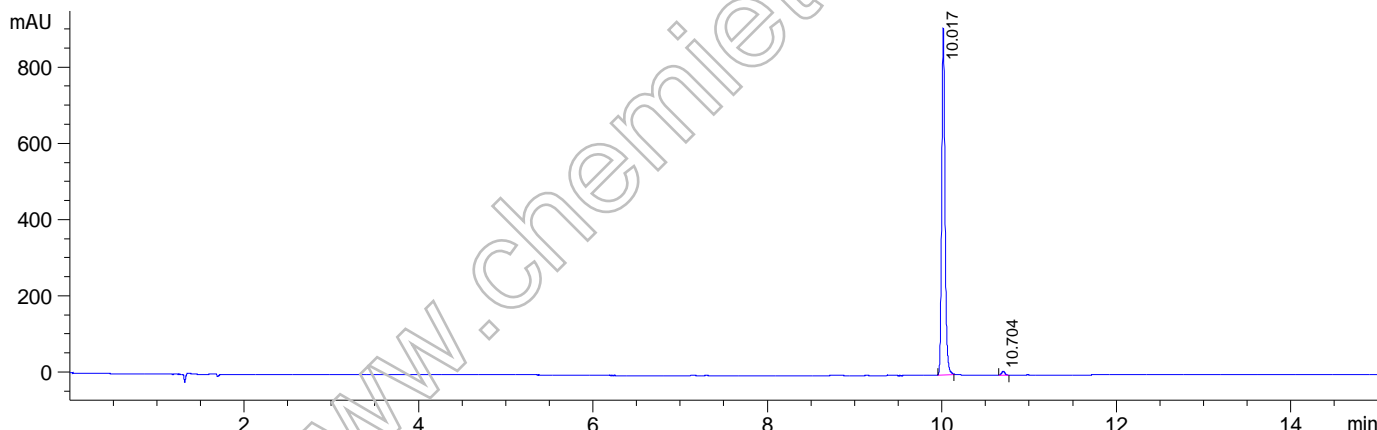
Tgt Mass(EZX) :
 Location : P1-B-02
 Inj : 0
 Inj Volume : 4 ul



DAD1 D, Sig=220,4 Ref=off



DAD1 B, Sig=254,4 Ref=off



Integration Results for DAD1 D, Sig=220,4 Ref=off

RetTim	Width	Area	Height	Area%
10.02	0.04	4427.73	1682.43	98.93
10.70	0.04	47.97	18.75	1.07

Integration Results for DAD1 B, Sig=254,4 Ref=off

RetTim	Width	Area	Height	Area%
10.02	0.04	2383.61	909.44	98.88
10.70	0.04	26.95	10.32	1.12

