

Sample Name: CT-LY283-(Abernaci cli b) -Batch 04

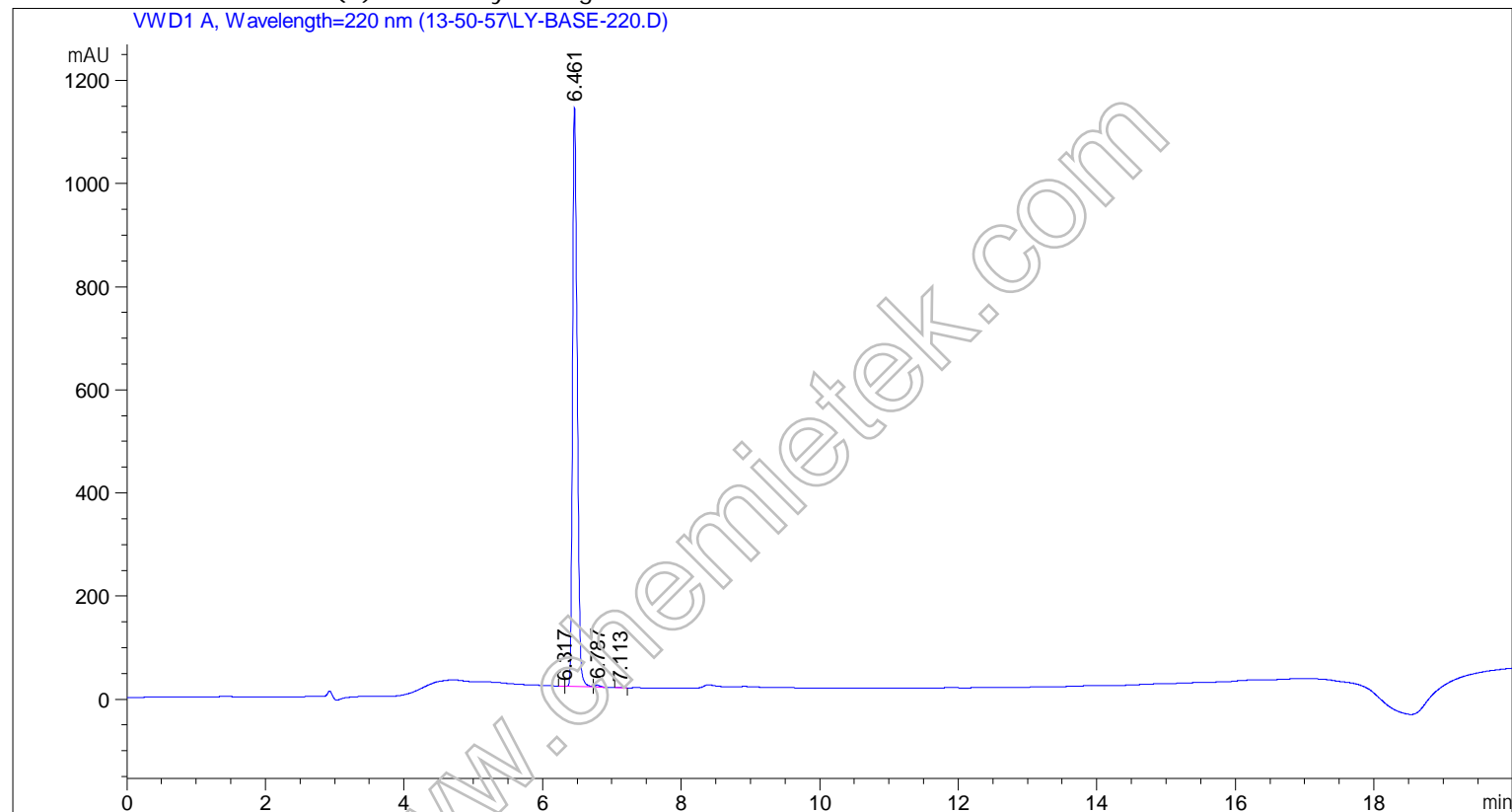


```

=====
Acq. Operator   : SYSTEM                      Seq. Line :    2
Acq. Instrument : Agilent HPLC                Location  :   15
                                                Inj       :    1
                                                Inj Volume: 5.000 µl
Different Inj Volume from Sample Entry! Actual Inj Volume : 0.500 µl
Acq. Method    : C:\Chem32\1\Data\13-50-57\LY-BASE-220.M
  
```

Analysis Method : C:\Chem32\1\Data\13-50-57\LY-BASE

Additional Info : Peak(s) manually integrated



```

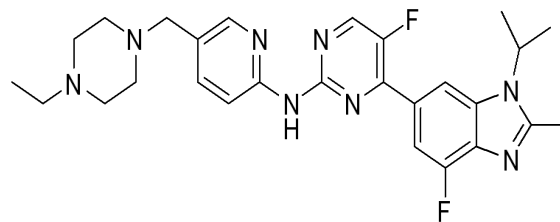
=====
                          Area Percent Report
=====
  
```

```

Sorted By      :      Signal
Multiplier     :      1.0000
Dilution      :      1.0000
Use Multiplier & Dilution Factor with ISTDs
  
```

Signal 1: VWD1 A, Wavelength=220 nm

Peak #	RetTime [min]	Type	Width [min]	Area [mAU*s]	Height [mAU]	Area %
1	6.317	MF	0.0599	1.53592	4.27245e-1	0.0289
2	6.461	FM	0.0783	5281.68994	1124.11218	99.5412
3	6.787	FM	0.0869	21.33112	4.09096	0.4020
4	7.113	MM	0.0931	1.47752	2.64555e-1	0.0278



Sample Name: CT LY283 (Abernaci cli b) Batch 04

Peak #	RetTime [min]	Type	Width [min]	Area [mAU*s]	Height [mAU]	Area %
----- ----- ----- ----- ----- ----- -----				5306.03450	1128.89495	
Totals :						

=====
*** End of Report ***

www.chemietek.com