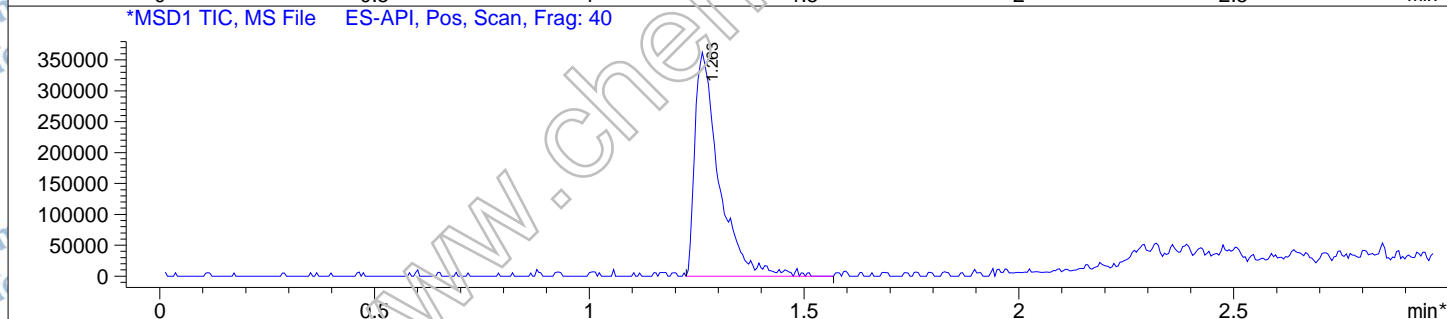
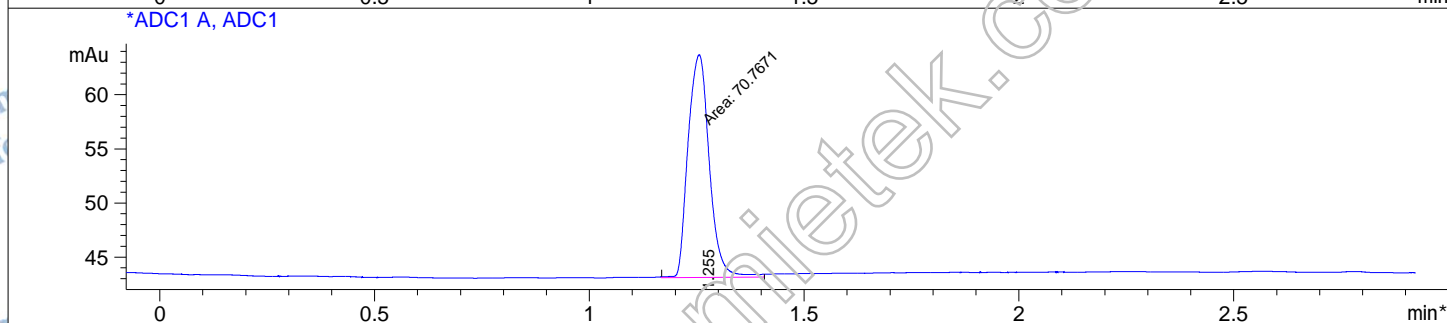
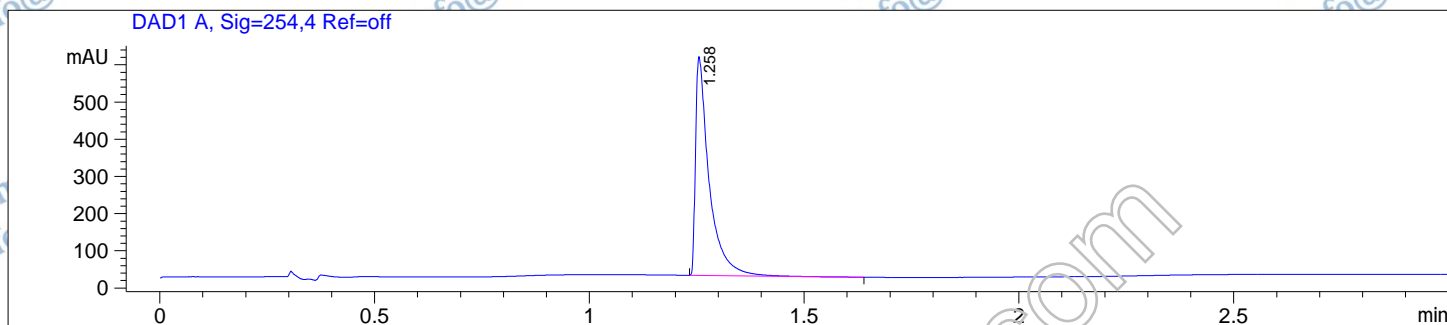


File D:\DATA\CT18\MONITOR\SP-0017841-TM1-26378-LCMSA040.D

Sample Name : LXS-196,CHEMIETEK-Lot 01 **Location** : P1-B-05
Acq. Operator : 18monitor **Inj** : 1
Spec. Reported : MS Integration **Inj Volume** : 1 ul
Acq. Method : C:\Chem32\2\METHODS\MONITOR 3MIN-A-P.M
Analysis Method : C:\CHEM32\2\METHODS\MONITOR 3MIN-A-P.M
Sample Info : Easy-Access Method: 'MONITOR 3MIN-A-P.M'
Method Info : Column; Waters X-Bridge-C18 50mm*4.6mm,3.5um
Mobile Phase: A: Water (0.05%TFA) B: ACN (0.05%TFA);
Gradient : B from 5% to 100% for 1.6 min and hold 100% for 1.4 min;
Flow Rate: 2 mL/min;
Column Temperature:40 °C.



Integration Results for DAD1 A, Sig=254.4 Ref=off

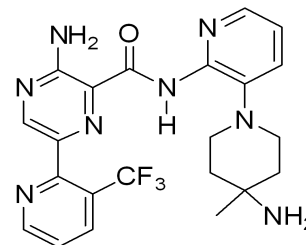
RetTim	Width	Area	Height	Area%
1.26	0.03	1296.10	579.34	100.00

Integration Results for ADC1 A, ADC1

RetTim	Width	Area	Height	Area%
1.26	0.06	70.77	20.60	100.00

Integration Results for MSD1 TIC, MS File

RetTim	Width	Area	Height	Area%
1.26	0.06	1414822.38	362003.66	100.00



Ret. Time: 1.26

<<<< POSITIVE SPECTRA >>>>

