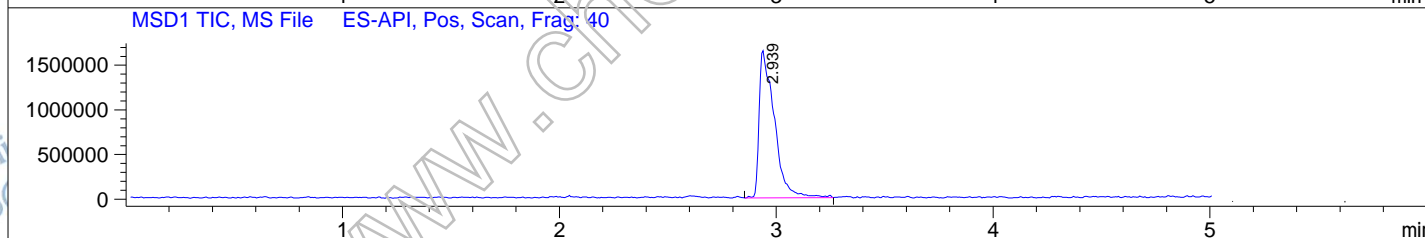
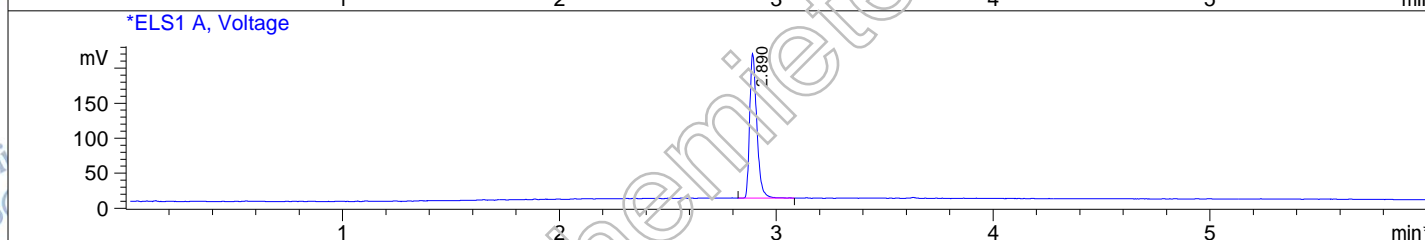
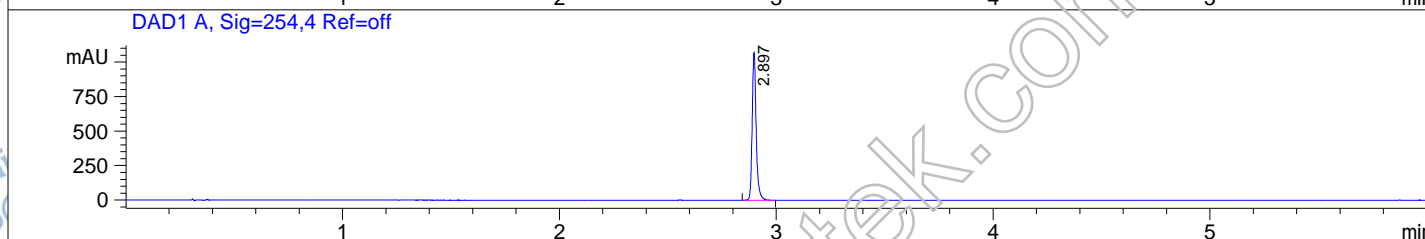
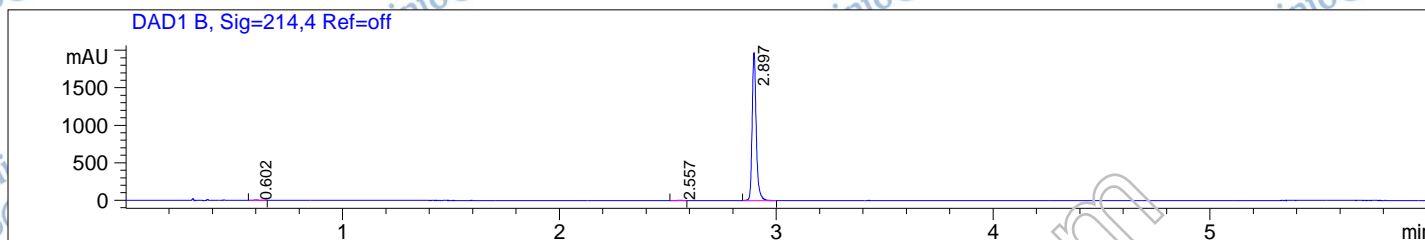


File ..TA\CT38\MONITOR\I-BET762-1-19276-LCMSA047.D Tgt Mass (EZ):  
 Seq. Line : 0  
 Sample Name : I-BET762-01 Location : P2-B-01  
 Acq. Operator : 38monitor Inj : 1  
 Spec. Reported : MS Integration Inj Volume : 0.7 ul  
 Acq. Method : C:\Chem32\1\METHODS\PRODUCT 6 MIN-B-P.M  
 Analysis Method : C:\Chem32\1\METHODS\PRODUCT 6 MIN-B-P.M  
 Sample Info : Easy-Access Method: 'PRODUCT 6MIN-B-P.M'  
 Method Info : Column: Waters X Bridge C18: 50 mm\*4.6 mm\*3.5 um  
 Mobile Phase: A: Water (0.01mol/LNH4HCO3) B:ACN;  
 Gradient: B from 5% to 100% for 5.0 min and hold 100% for 1.0 min;  
 Flow Rate: 2.0 mL/min;  
 Column Temperature: 40 °C.



Integration Results for DAD1 B, Sig=214,4 Ref=off

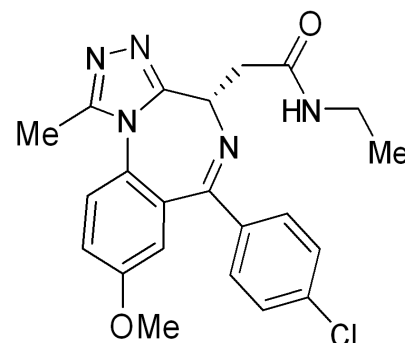
RetTim	Width	Area	Height	Area%
0.60	0.02	3.14	2.68	0.12
2.56	0.02	6.38	4.30	0.25
2.90	0.02	2580.92	1974.26	99.63

Integration Results for DAD1 A, Sig=254,4 Ref=off

RetTim	Width	Area	Height	Area%
2.90	0.02	1371.44	1071.00	100.00

Integration Results for ELS1 A, Voltage

RetTim	Width	Area	Height	Area%
2.89	0.04	474.79	205.96	100.00



Ret. Time: 2.94

<<<< POSITIVE SPECTRA >>>>

