

Sample Name: CT-GEMF-Chemietek Lot 01

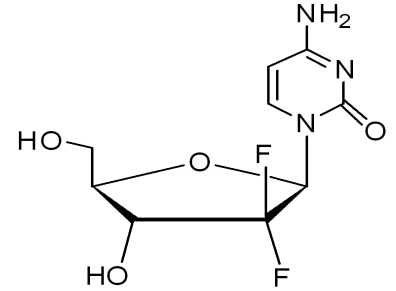


=====
 Acq. Operator : CTK
 Acq. Instrument : HPLCA004
 Location : P1-D-05

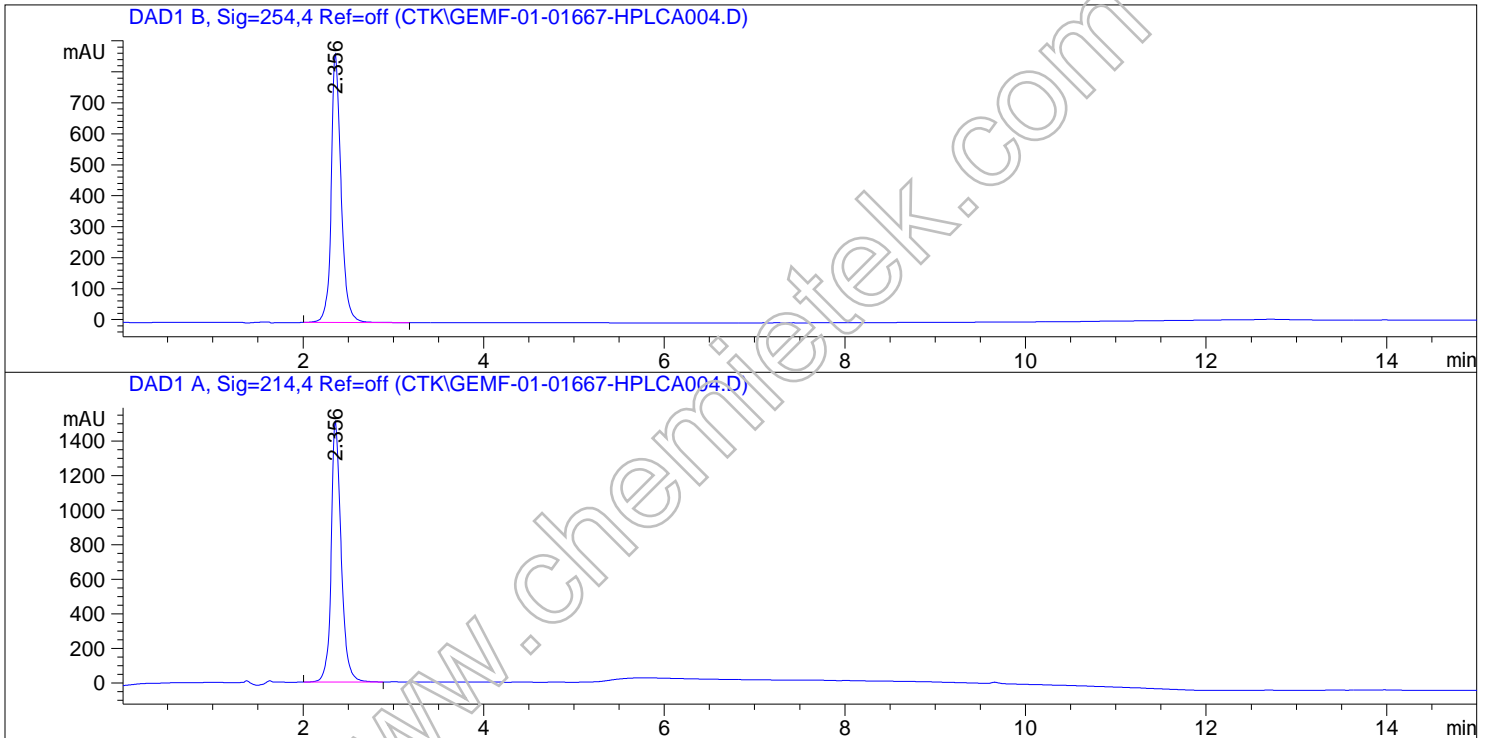
Inj Volume : 4.000 µl

Method : D:\METHODS\1-HPLC-15MIN-2.M

(modified after loading)
 Method Info : Mobile Phase: A: water(0.05%TFA) B: ACN(0.05%TFA)
 Gradient: 0min 5%B,3min 5%B,10min 95%B,15min 95%B
 Flow Rate: 1.2 ml/min
 Column: Eclipse XDB-C18,4.6*150mm,5um
 Oven Temperature: 40 C



Sample Info : Easy-Access Method: '1-HPLC-15MIN-2'



=====
 Area Percent Report
 =====

Sorted By : Signal
 Multiplier : 1.0000
 Dilution : 1.0000
 Use Multiplier & Dilution Factor with ISTDs

Signal 1: DAD1 B, Sig=254,4 Ref=off

Peak #	RetTime [min]	Type	Width [min]	Area [mAU*s]	Height [mAU]	Area %
1	2.356	BB	0.1164	6580.68262	868.71039	100.0000

Sample Name: CT-GEMF-Chemietek Lot 01

Totals : 6580.68262 868.71039

Signal 2: DAD1 A, Sig=214,4 Ref=off

Peak #	RetTime [min]	Type	Width [min]	Area [mAU*s]	Height [mAU]	Area %
1	2.356	BB	0.1170	1.15372e4	1511.65979	100.0000

Totals : 1.15372e4 1511.65979

=====
*** End of Report ***

www.chemietek.com