

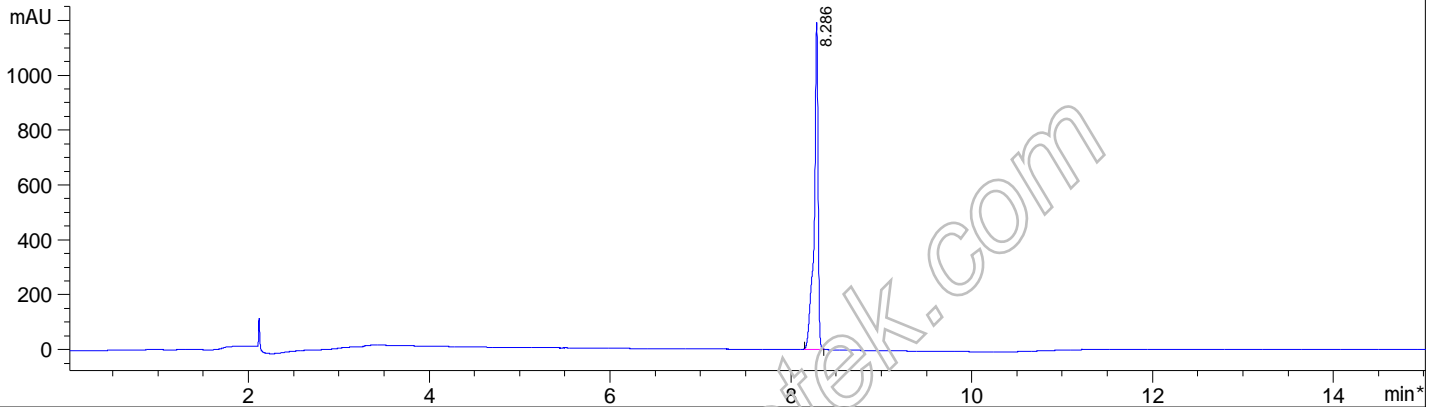
File D:\DATA\C52\MONITOR\CT-GSKMI-01-02519-LCMSA020.D

Sample Name : CT-GSKMI 01
 Acq. Operator : C52-Monitor
 Spec. Reported : MS Integration
 Acq. Method : D:\METHODS\1-HPLC.M
 Analysis Method : D:\METHODS\1-HPLC.M
 Sample Info : Easy-Access Method: '1-HPLC.M' 365.00
 Method Info : Column:SUNFire C18 (4.6x 150 mm, 3.5um)
 Mobile phase: H2O(0.01%TFA) (A) / ACN(0.01%TFA)(B)
 Elution program: Gradient from 5 to 95% of B in 8min at 1ml/min
 Temperature: 40 °C
 Detection: UV (214 , 4 nm) and MS (ESI, Pos mode ,110 to 800 amu)

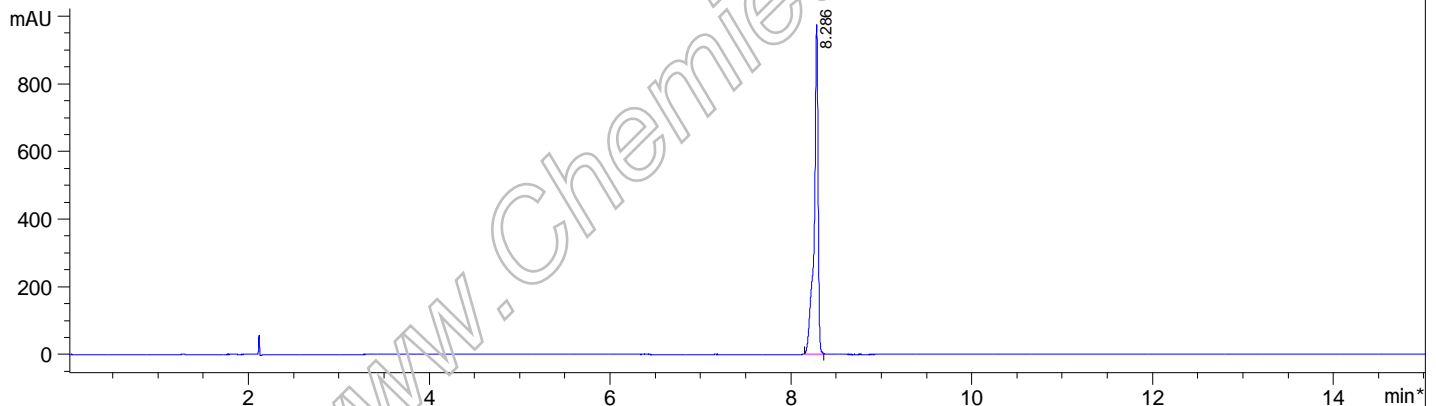
Tgt Mass(EZX) : 365.00
 Location : P2-F-05
 Inj : 0
 Inj Volume : 10 ul



*DAD1 A, Sig=214,4 Ref=off



*DAD1 B, Sig=254,4 Ref=off



Integration Results for DAD1 A, Sig=214,4 Ref=off

RetTim	Width	Area	Height	Area%
8.29	0.04	3613.78	1191.96	100.00

Integration Results for DAD1 B, Sig=254,4 Ref=off

RetTim	Width	Area	Height	Area%
8.29	0.04	2947.16	974.17	100.00

