

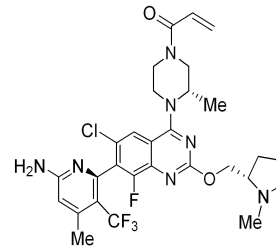


CHEMIETEK
Acq. Method
Column
Oven Temperature
Mobile Phase A
Mobile Phase B
Total Flow

HPLC Report

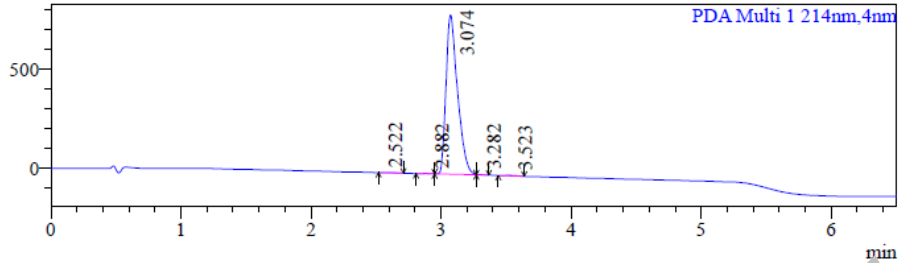
GDC-6036, CHEMIETEK Lot 01

: D:\Methods\C2\TFA\P-20-60-TFA-1.5ML-column2.lcm
: waters XBridge C18 5um, 50*4.6mm
: 40 C
: 0.05%TFA (aq.)
: ACN
: 1.5000 mL/min

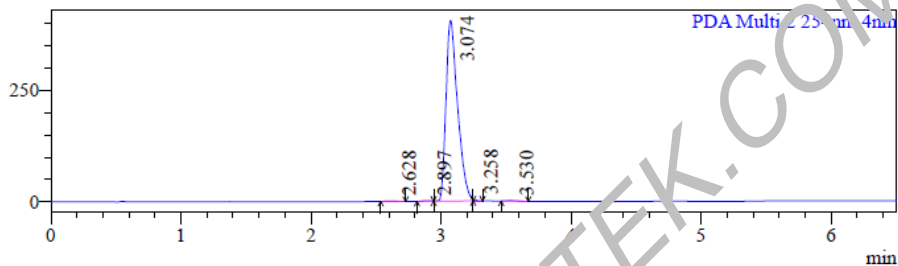


Chromatogram

mAU



mAU



Peak Table

PDA Ch1 214nm

#	R.T	Mark	Height	Area	Area%	Tailing Factor	Resolution
1	2.522	M	31.59	7188.18	0.14	--	--
2	2.882	M	1338.03	7262.13	0.15	--	2.14
3	3.074	V.M	797960.32	495090.83	99.39	1.46	1.16
4	3.282	V.M	2635.92	3793.01	0.08	--	--
5	3.523	M	2450.74	12056.79	0.24	1.38	--

PDA Ch2 254nm

#	R.T	Mark	Height	Area	Area%	Tailing Factor	Resolution
1	2.628	M	625.47	3445.44	0.14	0.96	--
2	2.897	M	1142.71	5394.01	0.21	--	1.71
3	3.074	V.M	402951.15	2523208.63	99.14	1.46	1.09
4	3.258	V.M	3370.43	5023.14	0.20	--	--
5	3.530	M	1571.60	8053.20	0.32	1.34	--

WWW.CHEMIETEK.COM