

File D:\DATA\A02\MONITOR\EP-TG-6-3-18994-LCMSA035.D

Sample Name : EPZ011989-01

Acq. Operator : A02-MONITOR

Spec. Reported : MS Integration

Acq. Method : D:\METHODS\1-POS-3MIN.M

Analysis Method : D:\METHODS\1-POS-3MIN.M

Sample Info : Easy-Access Method: '1-POS-3MIN.M' 605.00

Method Info : Mobile Phase : A:water(0.01%TFA) B:ACN(0.01%TFA)

Gradient:5%B increase to 95%B within 1.4min,95%B for 1.6min

Flow Rate :1.8ml/min

Column :SUNFire c18 4.6x50mm3.5um

Column Temperature:50C

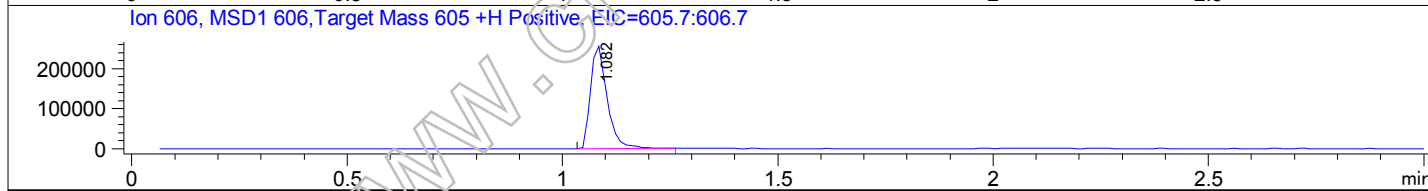
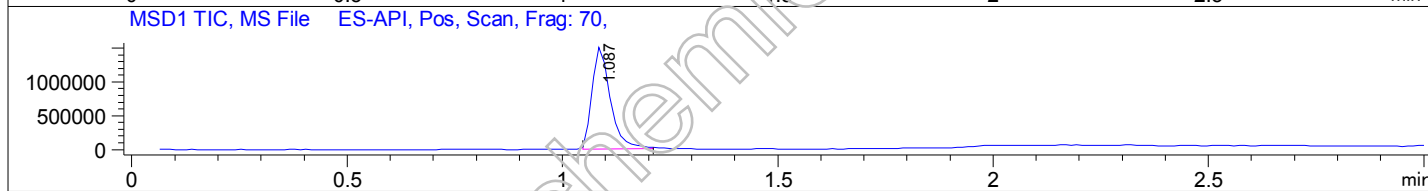
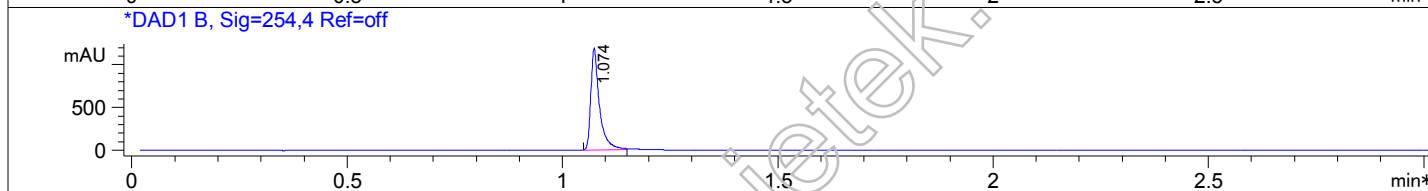
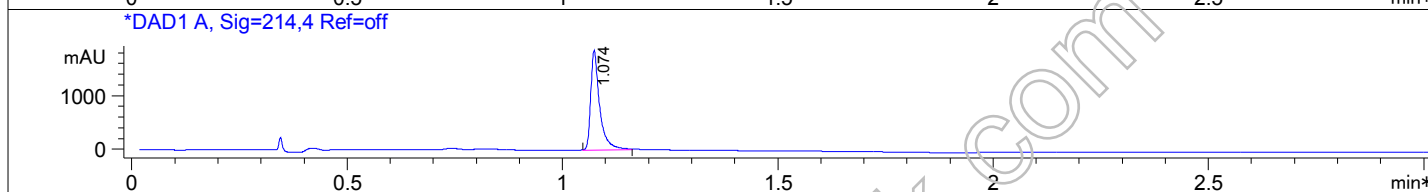
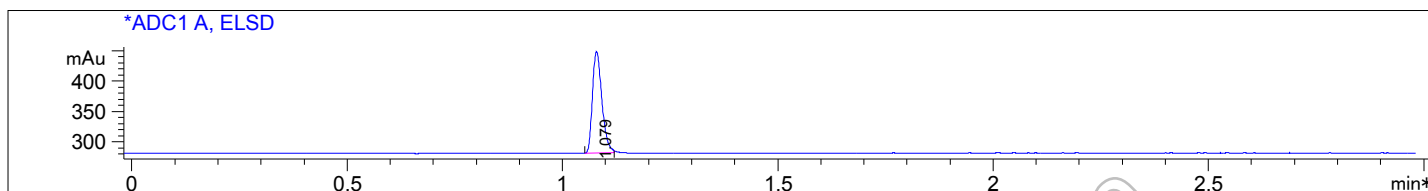
MASS Range: 110-1000

Tgt Mass (EZX) : 605.00

Location : P2-B-01

Inj : 1

Inj Volume : 2 ul



Integration Results for ADC1 A, ELSD

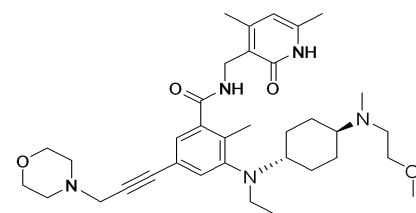
RetTim	Width	Area	Height	Area%
1.08	0.02	255.60	166.55	100.00

Integration Results for DAD1 A, Sig=214,4 Ref=off

RetTim	Width	Area	Height	Area%
1.07	0.02	2684.33	1847.05	100.00

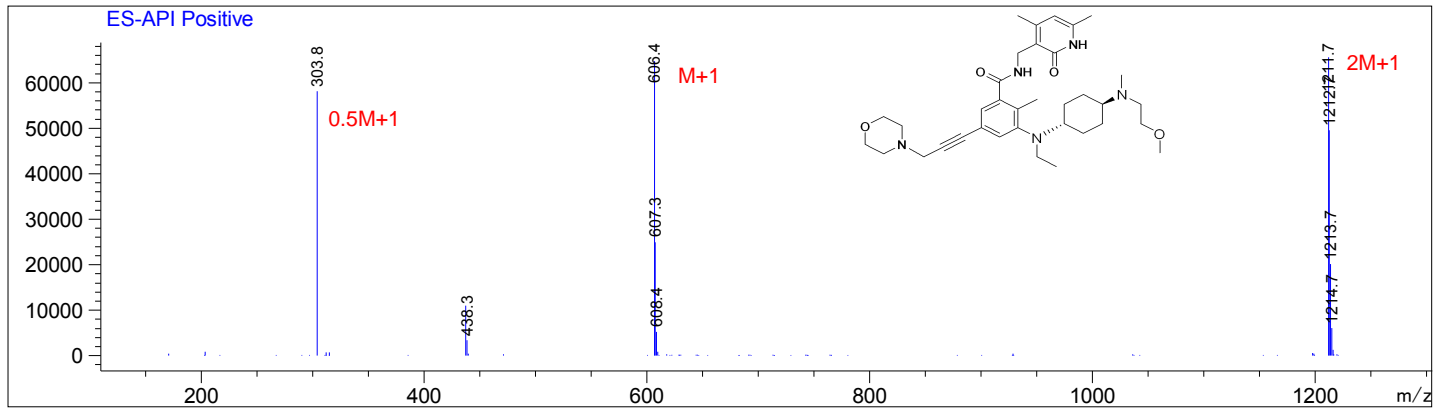
Integration Results for DAD1 B, Sig=254,4 Ref=off

RetTim	Width	Area	Height	Area%
1.07	0.02	1662.33	1182.39	100.00



Ret. Time: 1.09

<<<< POSITIVE SPECTRA >>>>



www.chemietek.com