

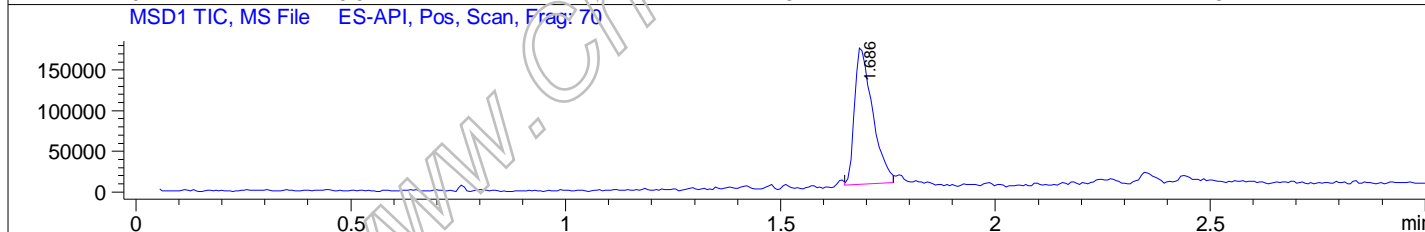
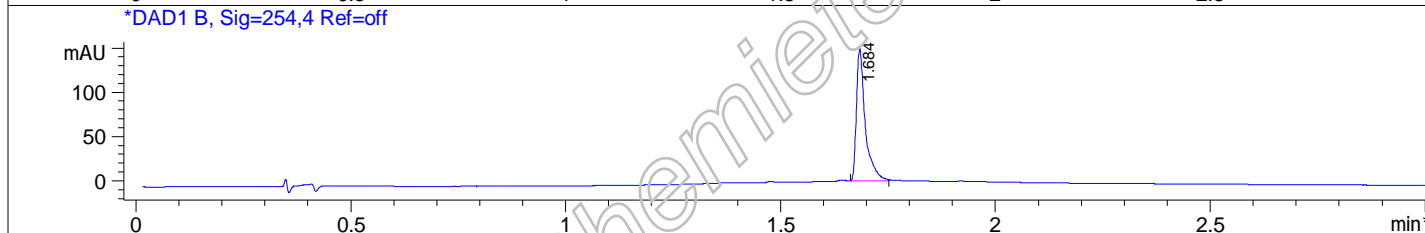
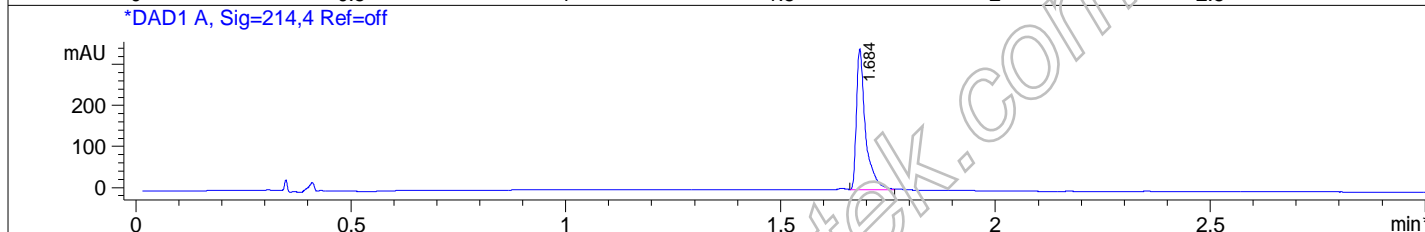
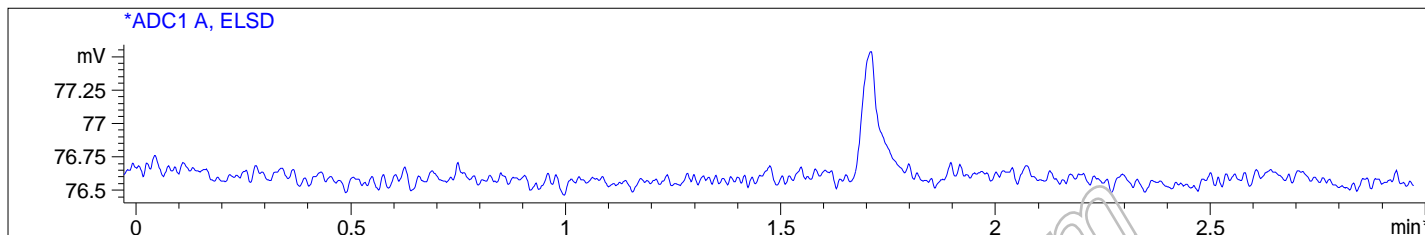
File D:\DATA\A02\MONITOR\EPZ-01859-LCMSA026.D

Sample Name : EPZ5676 Lot 01
 Acq. Operator : A02-Monitor
 Spec. Reported : MS Integration
 Acq. Method : C:\CHEM32\1\METHODS\1-POS-3MIN.M
 Analysis Method : C:\CHEM32\1\METHODS\1-POS-3MIN.M
 Sample Info : Easy-Access Method: '1-POS-3MIN'

Tgt Mass(EZX) :
 Location : P1-E-05
 Inj : 1
 Inj Volume : 2 ul



Method Info : Mobile Phase: A:Water(10mM NH4HCO3) B:ACN
 Gradient: 5% increase to 95%B within 1.4min, 5%B for 1.6min
 Flow Rate: 1.8 ml/min
 Column: XBridge C18,4.6*50mm,3.5um
 Column Temperature: 50 C
 Detection:UV(214,4nm) and MS(ESI,Pos mode,110 to 1000 amu)



Integration Results for ADC1 A, ELSD

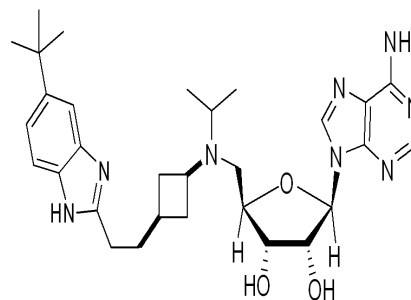
| RetTim | Width | Area | Height | Area% |
|--------|-------|------|--------|-------|
|--------|-------|------|--------|-------|

Integration Results for DAD1 A, Sig=214,4 Ref=off

| RetTim | Width | Area | Height | Area% |
|--------|-------|--------|--------|--------|
| 1.68 | 0.02 | 504.20 | 344.01 | 100.00 |

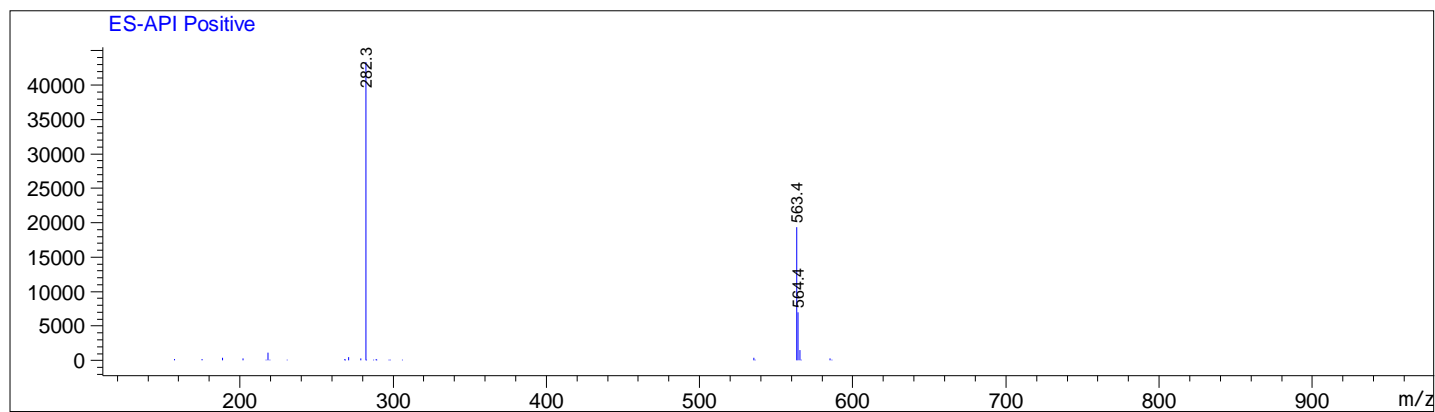
Integration Results for DAD1 B, Sig=254,4 Ref=off

| RetTim | Width | Area | Height | Area% |
|--------|-------|--------|--------|--------|
| 1.68 | 0.02 | 213.64 | 149.28 | 100.00 |



Ret. Time: 1.69

<<<< POSITIVE SPECTRA >>>>



www.Chemietek.com