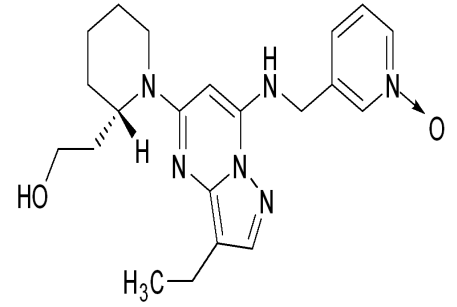
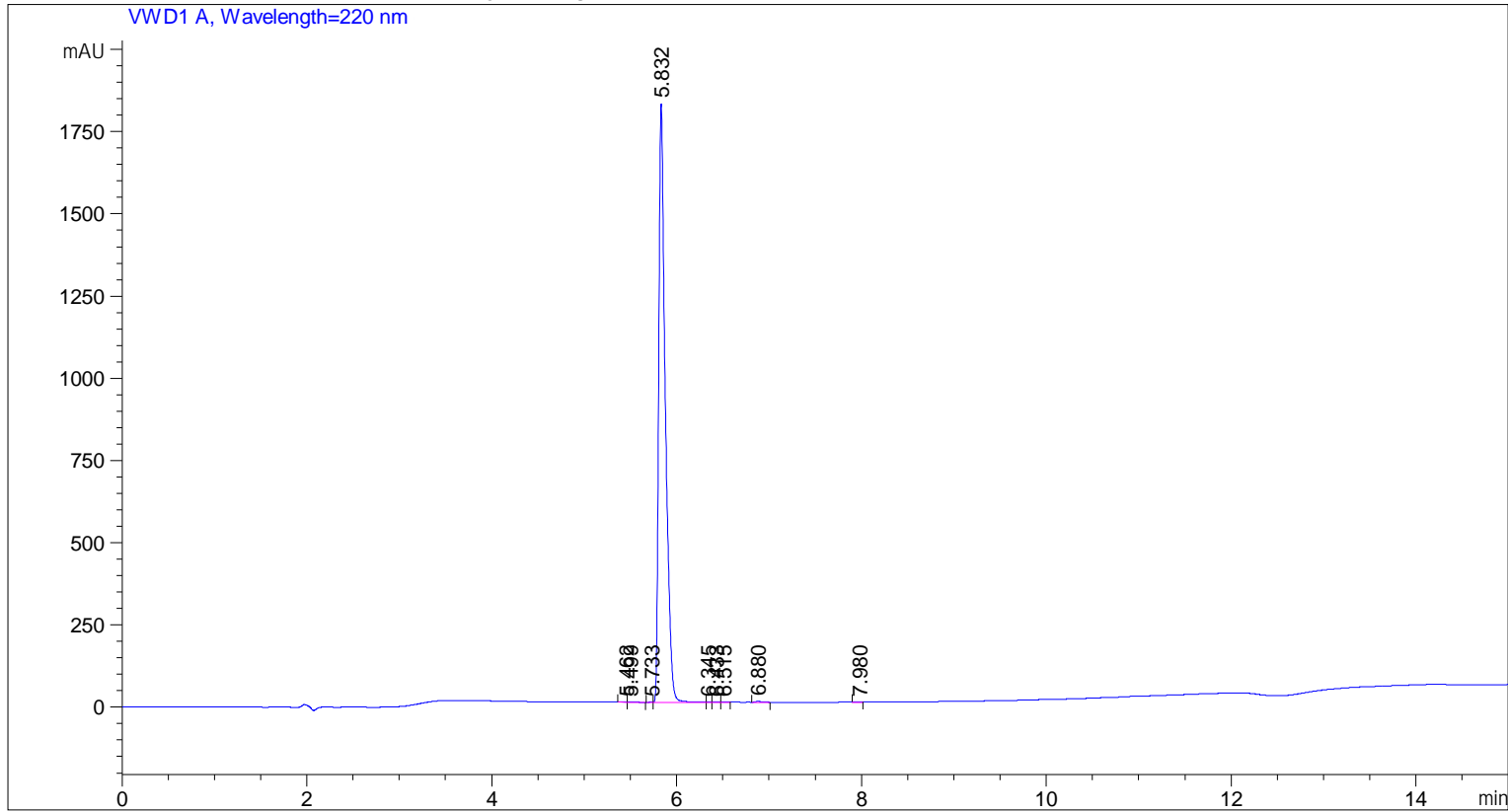




```
=====
Acq. Operator   : SYSTEM                      Seq. Line :   20
Acq. Instrument : Agilent HPLC                Location  :   17
                                                Inj       :    1
                                                Inj Volume: 5.000 µl
Different Inj Volume from Sample Entry! Actual Inj Volume : 0.700 µl
=====
```



Additional Info : Peak(s) manually integrated



=====
Area Percent Report
=====

```
Sorted By      :      Signal
Multiplier     :      1.0000
Dilution      :      1.0000
Use Multiplier & Dilution Factor with ISTDs
```

Signal 1: VWD1 A, Wavelength=220 nm

Peak #	RetTime [min]	Type	Width [min]	Area [mAU*s]	Height [mAU]	Area %
1	5.462	MF	0.0634	1.33397	3.50562e-1	0.0147
2	5.499	FM	0.0974	5.37569	9.19710e-1	0.0593
3	5.733	MF	0.0489	1.58788	5.40933e-1	0.0175
4	5.832	FM	0.0827	9036.15527	1820.72852	99.6965

Peak #	RetTime [min]	Type	Width [min]	Area [mAU*s]	Height [mAU]	Area %
5	6.345	FM	0.0553	1.23903	3.73540e-1	0.0137
6	6.433	FM	0.0748	1.22754	2.73547e-1	0.0135
7	6.515	FM	0.0703	2.28000	5.40352e-1	0.0252
8	6.880	MM	0.0777	12.18917	2.61369	0.1345
9	7.980	FM	0.0815	2.27928	4.66254e-1	0.0251

Totals : 9063.66782 1826.80710

=====
*** End of Report ***