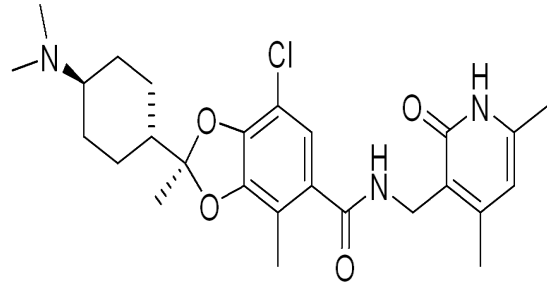


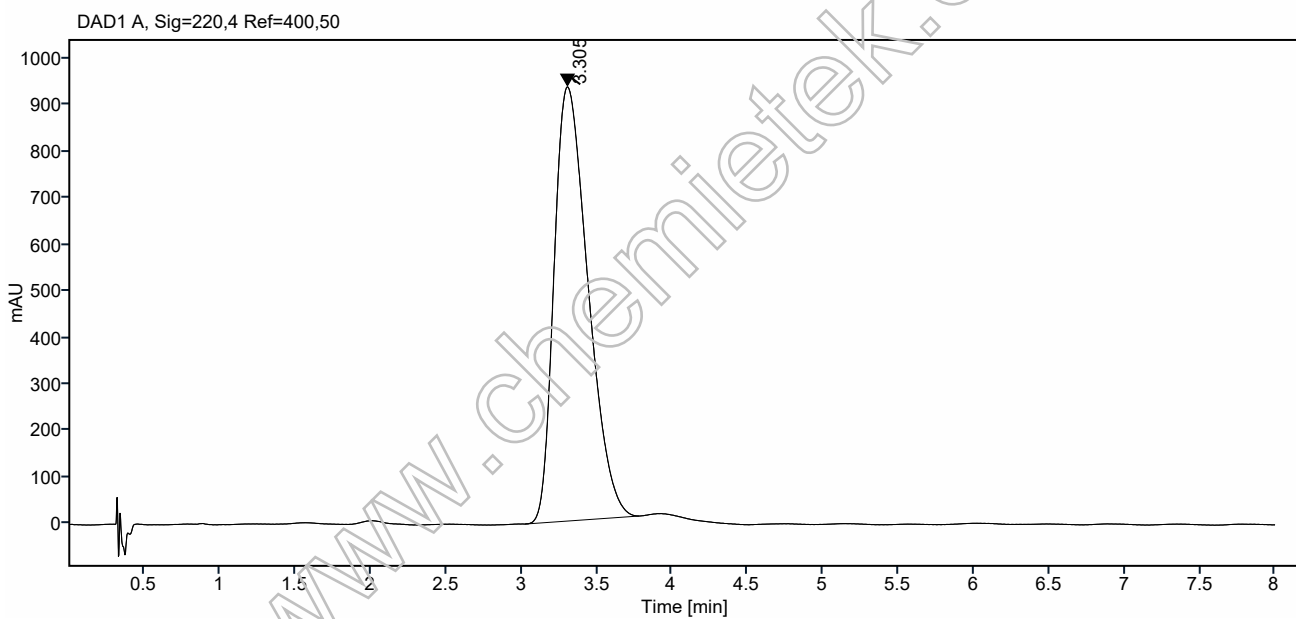
# Chiral HPLC Analysis Report



**Sample name:** MJ-DS-Q  
**Data file:** D:\10-5002-08 14-41-42\005-D2F-E5-MJ-DS-Q.D  
**Instrument:** SFC-Agilent  
**Acq. method:** MJ-DS.M  
**Location:** D2F-E5



**Method Comment:** Co-Solvent: MeOH(0.2%Methanol Ammonia)  
Gradient (B%) : 45%  
Back Pressure (bar): 100  
Flow (ml/min) : 4  
Temperature (°C): 40



**Signal:** DAD1 A, Sig=220,4 Ref=400,50

RT [min]	Area	Height	Area%	Peak Tail Factor	Peak Resolution USP	Peak Theoretical Plates USP
3.305	14610.86328	934.25641	100.00	1.46226		1018.25908