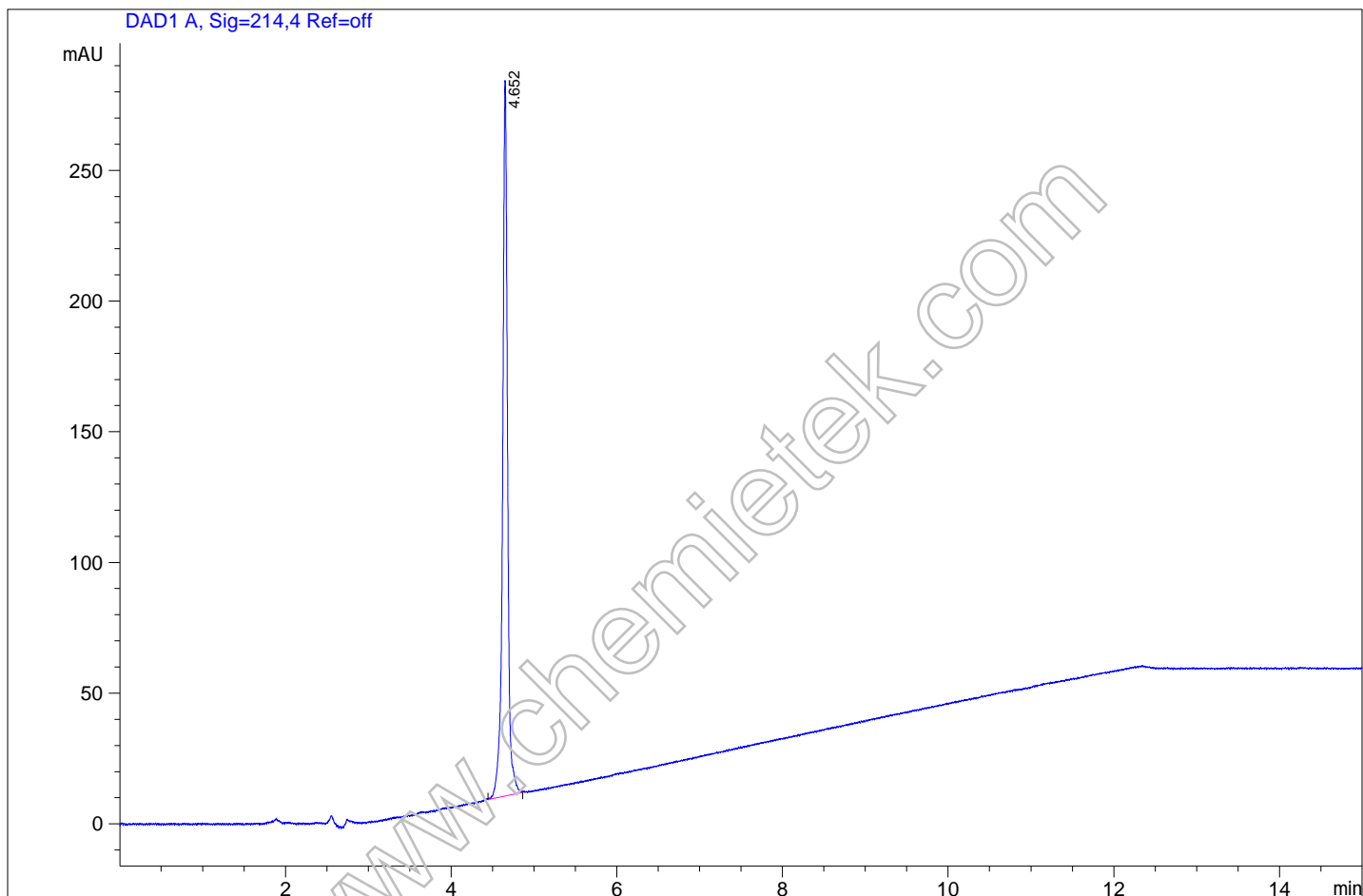


Tgt Mass (EZ): 495.00  
 Seq. Line : 0  
 Location : P1-E-04  
 Inj : 1



Acq. Operator : 18product  
 Spec. Reported : MS Integration  
 Acq. Method : C:\Chem32\1\METHODS\HPLC-HILIC.M  
 Analysis Method : C:\CHEM32\1\METHODS\HPLC-HILIC.M  
 Sample Info : BMS-986158 CHEMIETEK Lot 02  
 Method Info : Column: Luna Silica 150 mm\*4.6 mm 5 um  
 Mobile Phase: A:0.05%TFA/H2O B:0.05%TFA/ACN;  
 Gradient: 0-10min(95-70%)B; 10-15min(70%)B  
 Flow Rat:1.0mL/min;  
 Column Temperature: 40 °C



Integration Results for DAD1 A, Sig=214,4 Ref=off

RetTim	Width	Area	Height	Area%
4.65	0.06	1132.37	273.56	100.00

