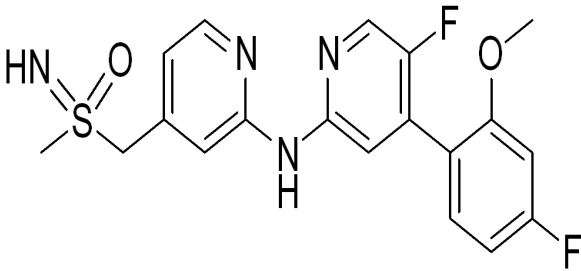
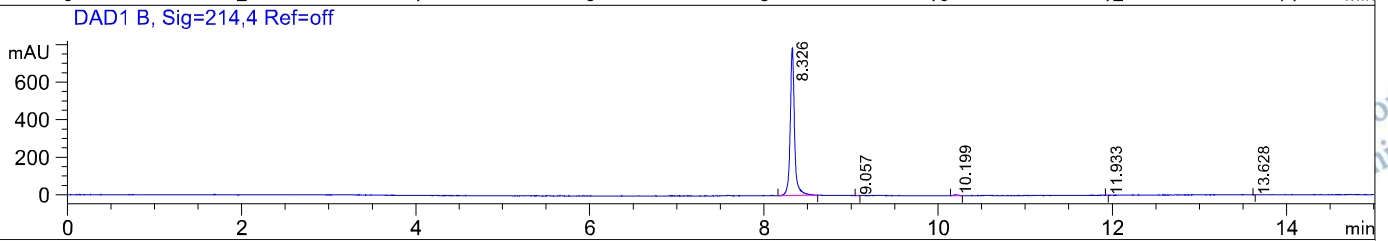
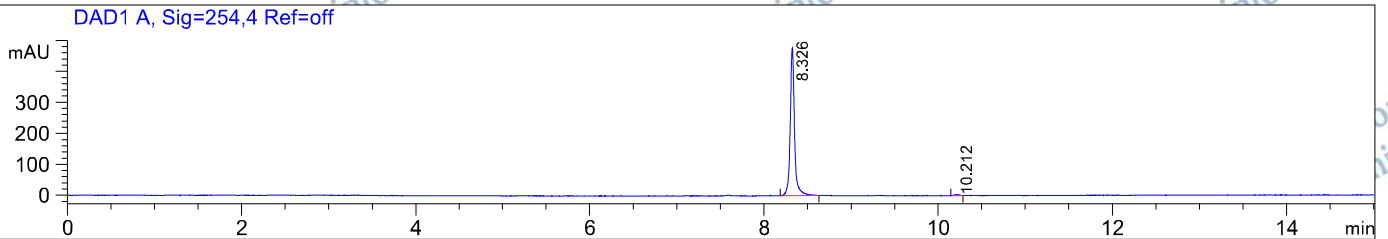


File ..CT18\PRODUCT\SP-0003527-BAY-12501-LCMSA045.D Tgt Mass (EZX):
 Seq. Line : 0
 Sample Name : SP-0003527-BAY125, 01 Location : P1-F-07
 Acq. Operator : 18product Inj : 1
 Spec. Reported : MS Integration Inj Volume : 0.3 ul
 Acq. Method : C:\Chem32\1\METHODS\HPLC-B-MS.M
 Analysis Method : C:\Chem32\1\METHODS\HPLC-B-MS.M
 Sample Info : Easy-Access Method: 'HPLC-B-MS.M'
 Method Info : Column: L-Column 2 ODS: 150mm*4.6 mm*5 um;
 Mobile Phase: A: Water (0.01mol/L NH4HCO3) B: ACN
 Gradient : B from 5% to 95% for 10 min and hold 95% for 5 min;
 Flow rate: 1.0 ml/min;
 Column Temperature: 40 °C



Integration Results for DAD1 A, Sig=254,4 Ref=off

RetTim	Width	Area	Height	Area%
8.33	0.05	1638.74	477.81	99.27
10.21	0.05	12.02	3.44	0.73

Integration Results for DAD1 B, Sig=214,4 Ref=off

RetTim	Width	Area	Height	Area%
8.33	0.05	2703.52	785.38	99.14
9.06	0.03	2.16	1.09	0.08
10.20	0.05	18.68	5.09	0.68
11.93	0.01	1.46	1.63	0.05
13.63	0.01	1.09	1.43	0.04

CHEMIETEK HPLC/MS Report

Ret. Time: 8.34

