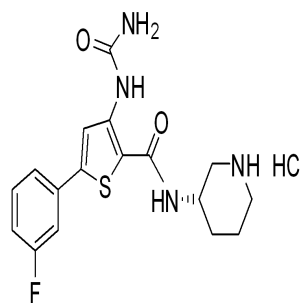


Chiral HPLC Report

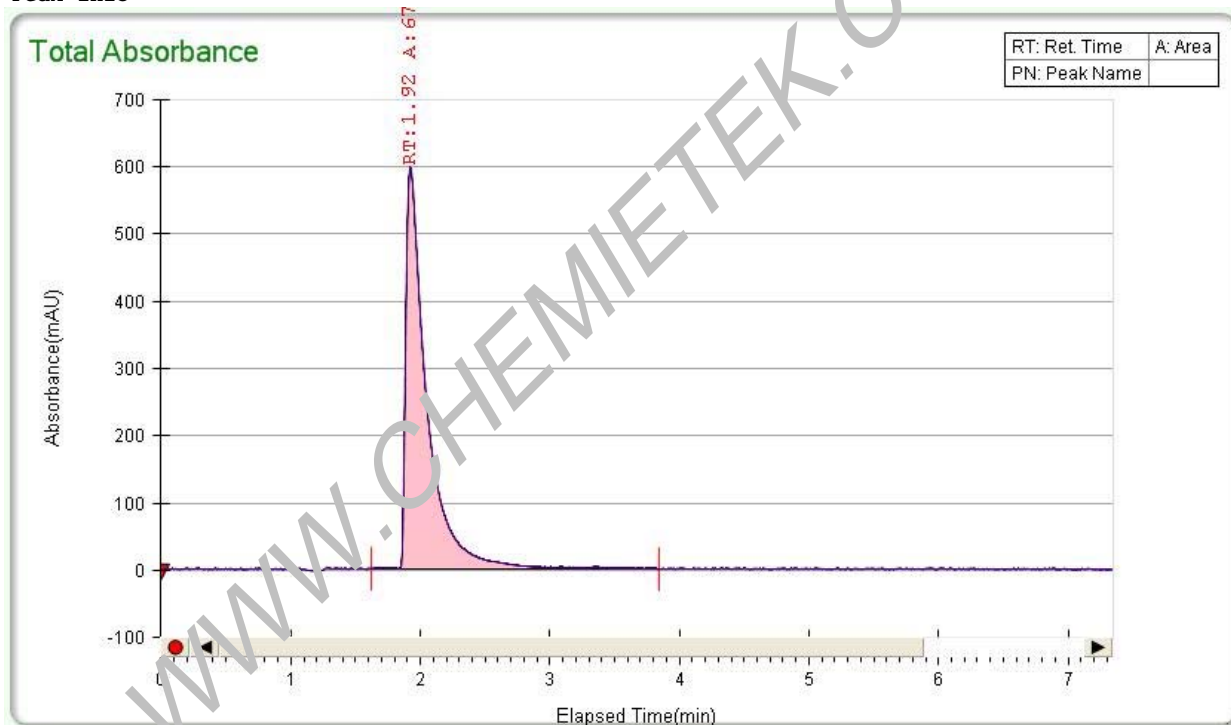


Injection Volume 5
Co-Solvent MEOH(0.1%DEA)
Column OJ-H (4.6*250mm,5um)
Sample AZD7762, Lot CT-02
Sample Well P1: 2E
Column Temperature 38.7
CO2 Flow Rate 2.1
Co-Solvent Flow Rate 0.9
Co-Solvent % 30
Back Pressure 151
Total Flow 3
PDA Start Wavelength 214
PDA Stop Wavelength 359
Injection Info



Number	RT (min)	Area	Area %
1	1.92	6751.1996	100

Peak Info



PDASingleSpectrumGraph
PDASingleSpectrumPlot.png