

File D:\DATA\A02\R-AZD8186-05448-HPLCA004.D

Sample Name : AZD8186 01
 Acq. Operator : HPLCA004
 Spec. Reported : MS Integration
 Acq. Method : C:\Chem32\1\METHODS\2-HPLC-15MIN.M
 Analysis Method : C:\CHEM32\1\METHODS\2-HPLC-5-65-C06.M
 Sample Info : Easy-Access Method: '2-HPLC-15min'
 Method Info : Mobile Phase: A: water(0.01%TFA) B: ACN(0.01%TFA)
 Gradient: 3min 5%B, increase to 65%B within 20min , increase to 95%B withi
 ,95%B for 5min
 Flow Rate: 1.2 ml/min
 Column: Eclipse XDB-C18,4.6*150mm,5um
 Oven Temperature: 40 C

Tgt Mass(EZX) :

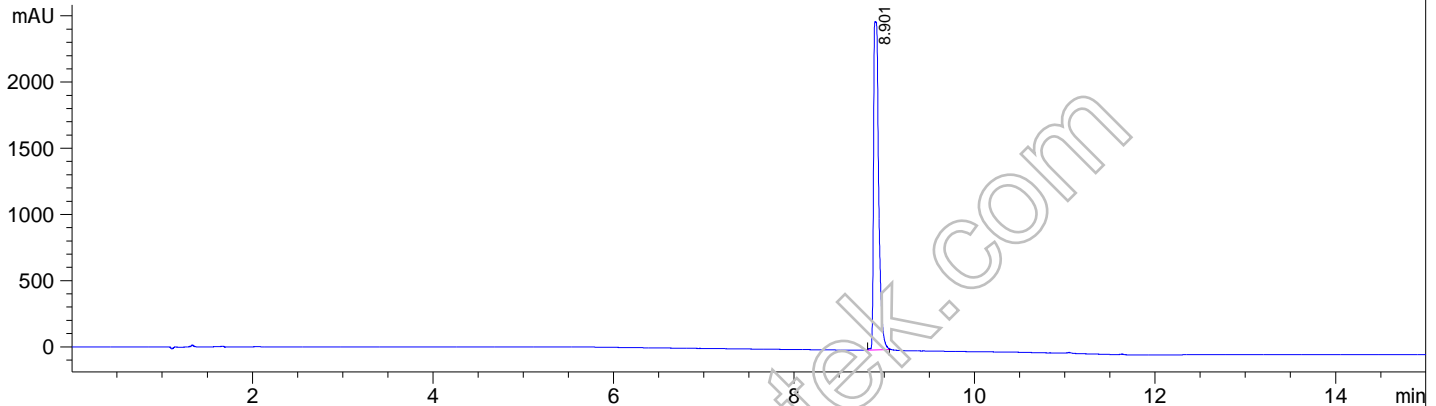
Location : P1-F-07

Inj : 0

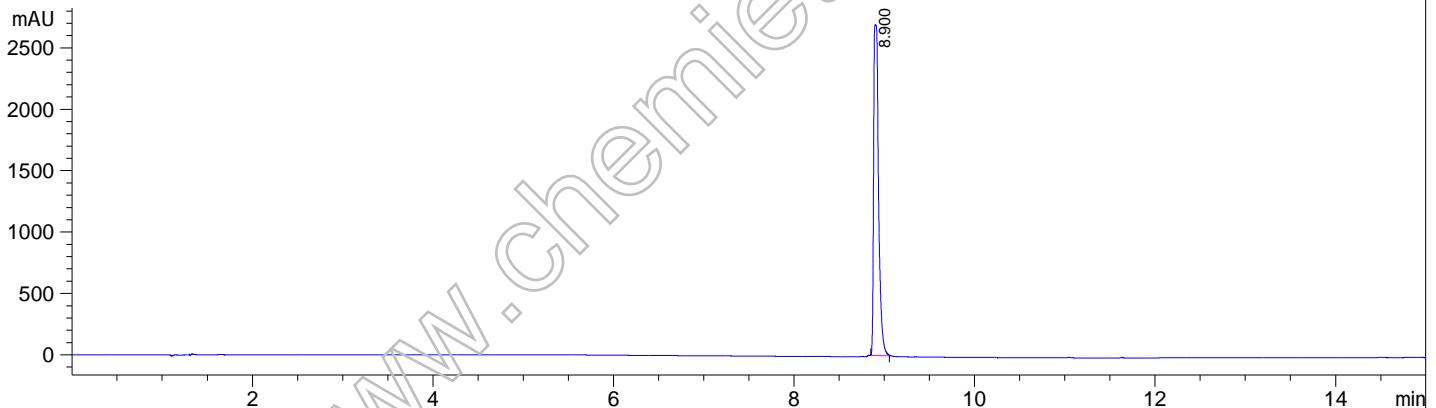
Inj Volume : 4 ul



DAD1 A, Sig=214,4 Ref=off



DAD1 D, Sig=220,4 Ref=off



Integration Results for DAD1 A, Sig=214,4 Ref=off

RetTim	Width	Area	Height	Area%
8.90	0.05	9809.15	2481.53	100.00

Integration Results for DAD1 D, Sig=220,4 Ref=off

RetTim	Width	Area	Height	Area%
8.90	0.05	10286.28	2695.96	100.00

