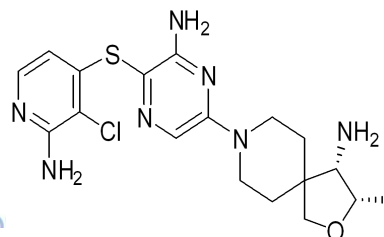


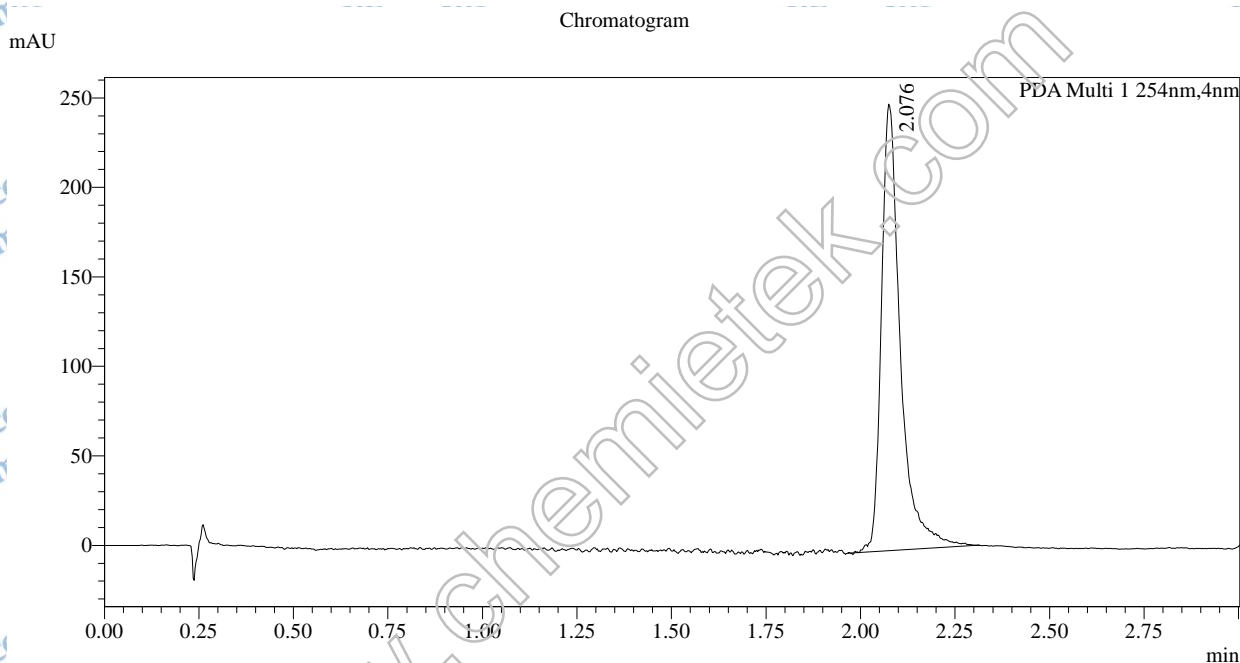


Chiral SFC Report

Compound ID : TNO155 CHEMIETEK Lot 02
Sample ID : CT24515-2-P1F_D5
Injection Vol : 2ul
Location : vial12
Acq Method : D:\METHODS\AS-3-MeOH(DEA)-5-40-3ML-35T.lcm
Org DateFile : D:\DATA\2020\202006\20200622\CT24515-2-P1F_D5.lcd
Injection Date : 6/22/2020 11:15:46 PM
Instrument : CAS-CT-ANA-SFC-D(SHIMADZU LC-30AD)



Method details: "
Mobile phase: Phase A for CO₂, and Phase B for MeOH(0.05%DEA);
Gradient elution: MeOH (0.05% DEA) in CO₂ from 5% to 40%
Flow rate: 3mL/min;Detector: PDA
Column Temp: 35C;Back Pressure: 100Bar "



1 PDA Multi 1 / 254nm,4nm

Integration Result

Peak Table

Peak#	Ret. Time	Height	Height%	Resolution(USP)	Area	Area%
1	2.076	247179	100.000	--	872004	100.000