

CHEMIETEK HPLC-MS Report

File D:\DATA\A02\MONITOR\AN-0204-T-54572-LCMSA001.D

Injection Date : 5 Feb 15 11:22 am +0800

Tgt Mass (EZX) :

Sample Name : RN-486, 01

Location : P1-D-06

Acq. Operator : A02-Monitor

Inj : 1

Spec. Reported : MS Integration

Inj Volume : 5 ul

Acq. Method : D:\METHODS\1-POS-MON-1.M

Analysis Method : D:\METHODS\1-POS-MON-1.M

Sample Info : Easy-Access Method: '1-POS-MON-1'

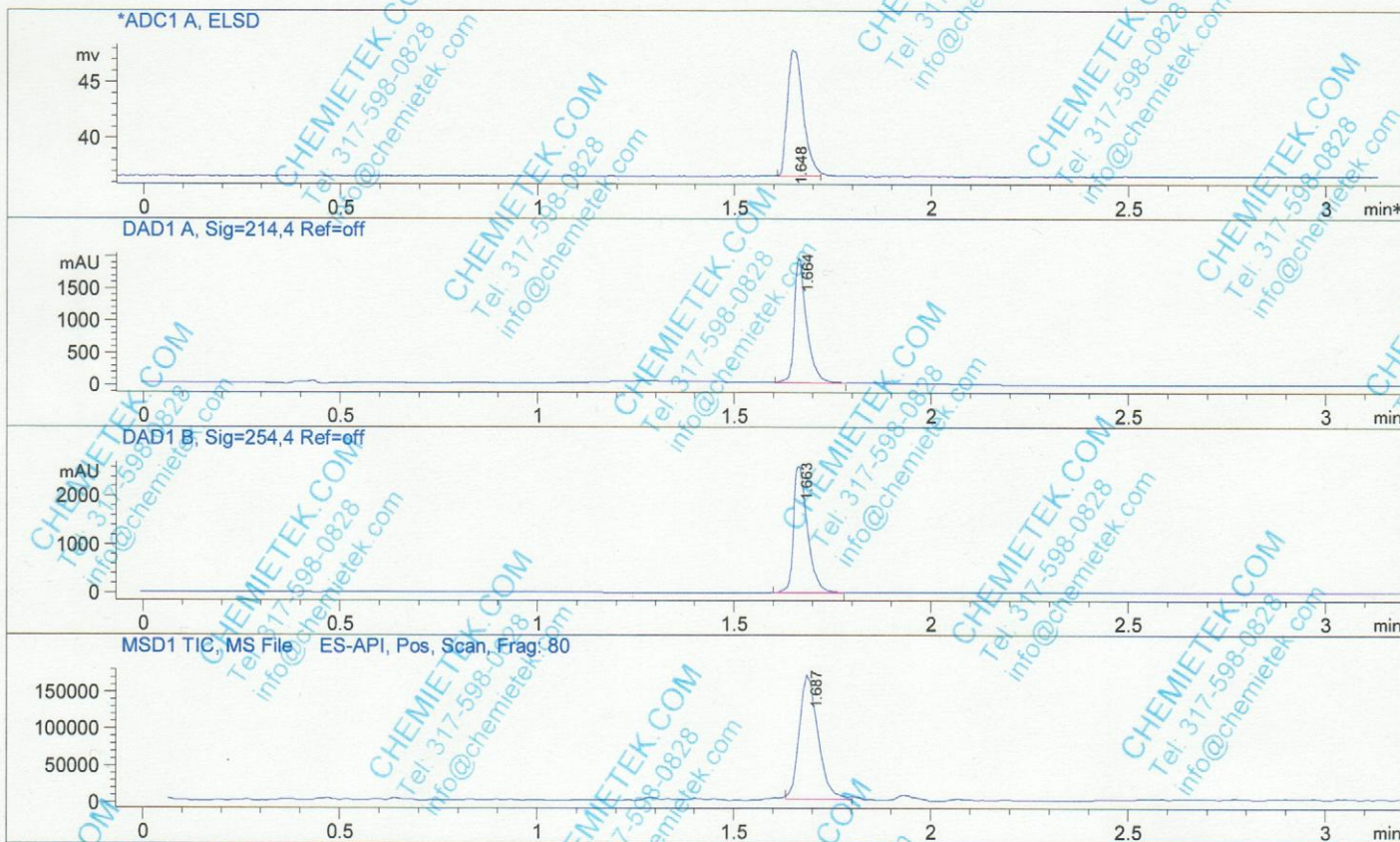
Method Info : Column: SUNFIRE(4.6x 50 mm,)

Mobile phase: H2O(0.05%TFA) (A) / ACN(0.05%TFA) (B)

Elution program: Gradient from 10 to 95% of B in 1.5min at 1.8ml/min

Temperature: 50 °C

Detection: UV (214 , 4 nm) and MS (ESI, Pos mode, 70 to 1000 amu)



Integration Results for ADC1 A, ELSD

RetTim	Width	Area	Height	Area%
1.65	0.04	31.52	11.22	100.00

Integration Results for DAD1 A, Sig=214.4 Ref=off

RetTim	Width	Area	Height	Area%
1.66	0.03	4184.88	1931.94	100.00

Integration Results for DAD1 B, Sig=254.4 Ref=off

RetTim	Width	Area	Height	Area%
1.66	0.04	6388.56	2585.96	100.00

CHEMIETEK HPLC-MS Report

Ret. Time: 1.69

<<<< POSITIVE SPECTRA >>>>

