

LC/MS Report

File D:\DATA\T245\MONITOR\S-2-22773-LCMSA013.D

Injection Date : 21 Jan 20 9:28 am +0800

Sample Name : CT-MG265 Lot 02

Acq. Operator : T245-Monitor

Spec. Reported : MS Integration

Acq. Method : D:\METHODS\1-POS-3MIN.M

Analysis Method : D:\METHODS\1-POS-3MIN.M

Sample Info : Easy-Access Method: '1-POS-3MIN'

Method Info : Mobile Phase: A: water(0.01%TFA) B: ACN(0.01%TFA)

Gradient: 5% increase to 95%B within 1.3 min, 95%B for 1.7 min.

Flow Rate: 2.0ml/min

Column:Sunfire C18,4.6*50mm,3.5um

Column Temperature: 45 C

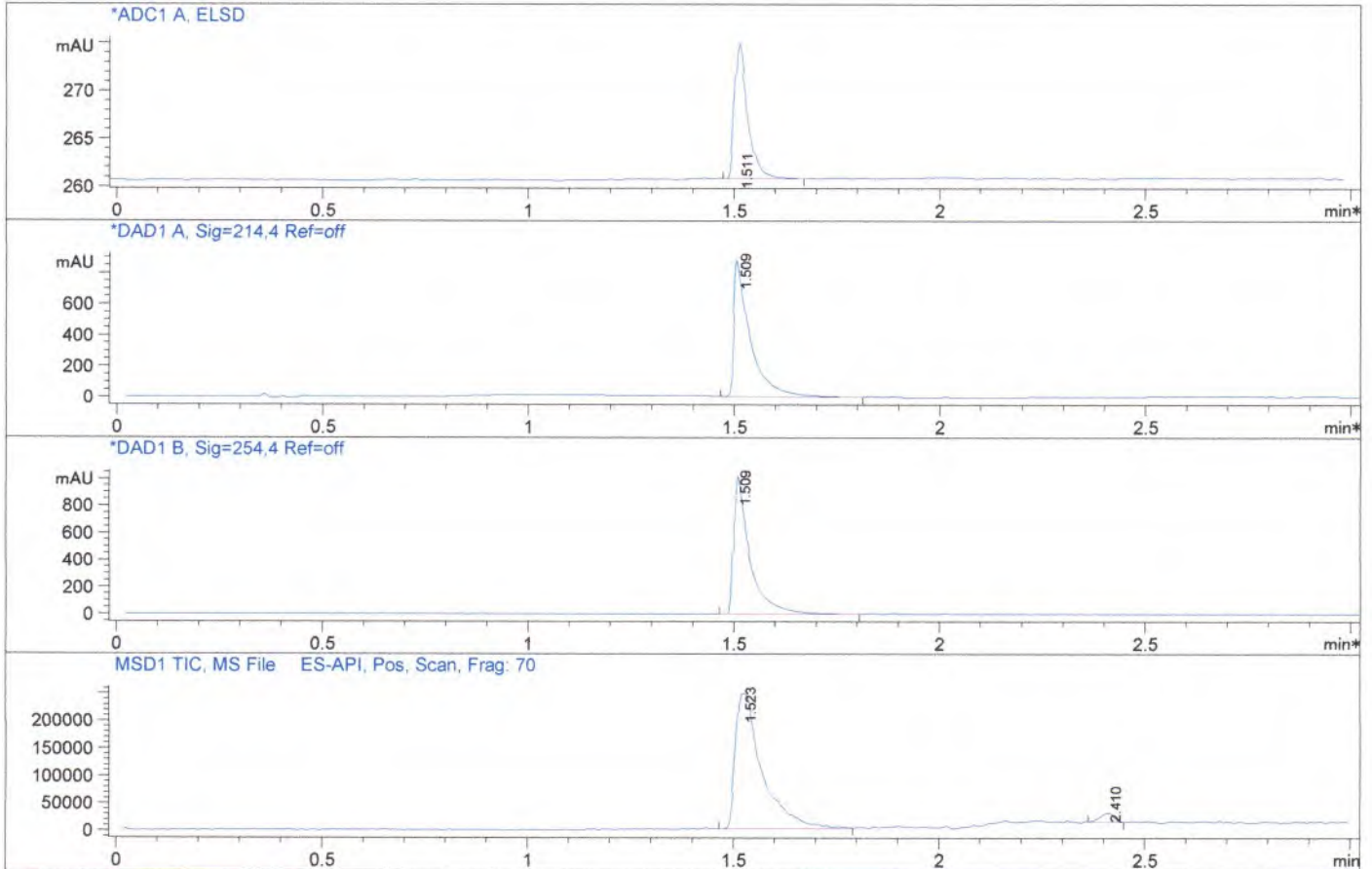
Detection:UV(214,4nm) and MS(ESI,Pos mode,110 to 1000 amu)

Tgt Mass (EZX) :

Location : P2-F-09

Inj : 1

Inj Volume : 0.5 ul



Integration Results for ADC1 A, ELSD

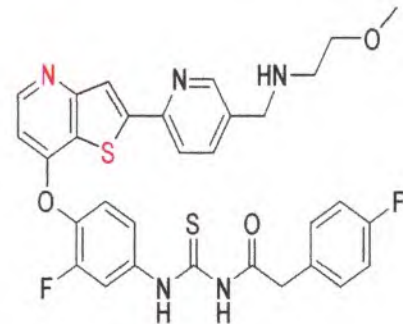
RetTim	Width	Area	Height	Area%
1.51	0.03	32.60	14.18	100.00

Integration Results for DAD1 A, Sig=214,4 Ref=off

RetTim	Width	Area	Height	Area%
1.51	0.04	2428.20	878.91	100.00

Integration Results for DAD1 B, Sig=254,4 Ref=off

RetTim	Width	Area	Height	Area%
1.51	0.04	2788.54	1015.59	100.00



Ret. Time: 1.52

<<< POSITIVE SPECTRA >>>

