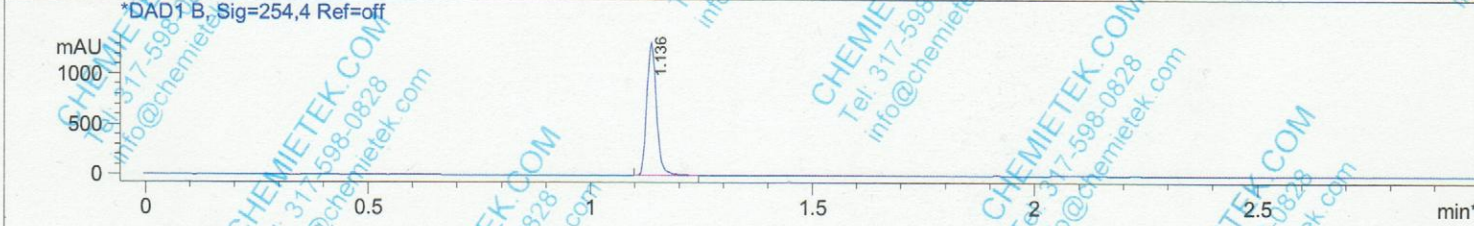
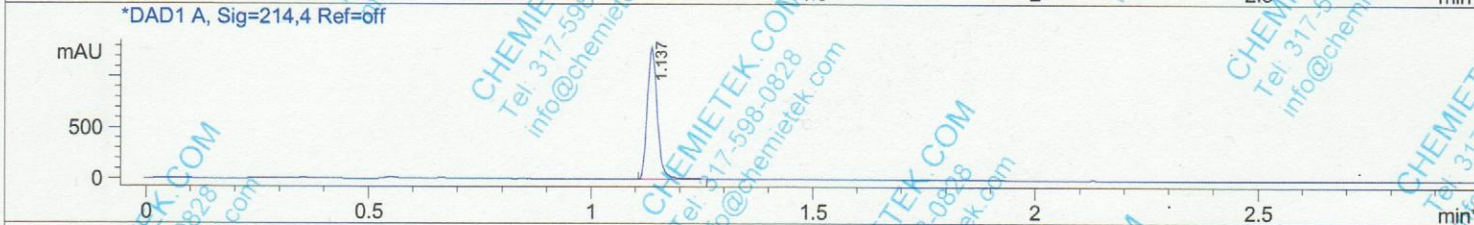
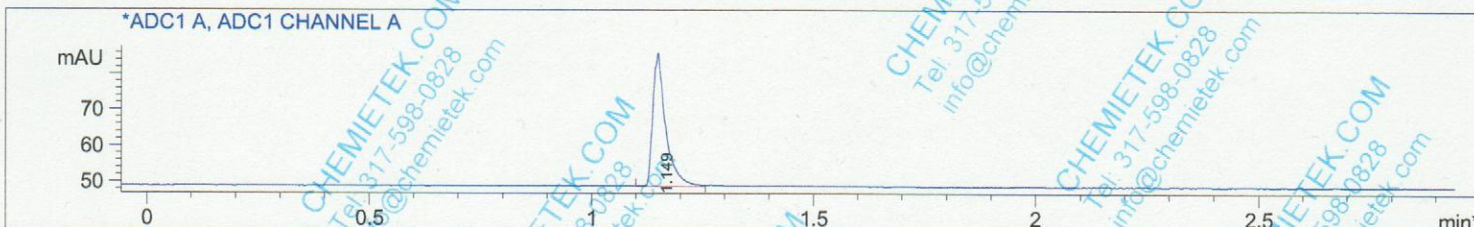


File D:\DATA\AA\MONITOR\LY-3177833-01-LCMSA002.D

Injection Date : 1 Sep 16 2:41 pm +0800 Tgt Mass (EZ) :  
 Sample Name : LY-3177833, 01 Location : P1-D-03  
 Acq. Operator : AA-MONITOR Inj : 1  
 Spec. Reported : MS Integration Inj Volume : 2 ul  
 Acq. Method : D:\METHODS\1-POS-3MIN-MON.M  
 Analysis Method : D:\METHODS\1-POS-3MIN-MON.M  
 Sample Info : Easy-Access Method: '1-POS-3MIN-MON'  
 Method Info : Mobile Phase: A: water (0.01%TFA) B:ACN(0.01%TFA)  
 Gradient: 5% to 95%B within 1.6 min  
 Flow Rate : 2.0ml/min  
 Column :SunFire C18, 4.6\*50mm, 3.5um  
 Oven Temperature : 50C



Integration Results for ADC1 A, ADC1 CHANNEL A

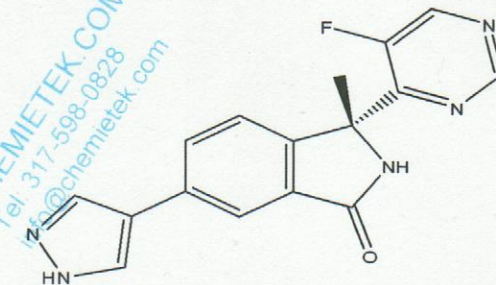
RetTim	Width	Area	Height	Area%
1.15	0.03	76.22	36.36	100.00

Integration Results for DAD1 A, Sig=214,4 Ref=off

RetTim	Width	Area	Height	Area%
1.14	0.02	2056.51	1296.05	100.00

Integration Results for DAD1 B, Sig=254,4 Ref=off

RetTim	Width	Area	Height	Area%
1.14	0.02	2044.80	1327.97	100.00



CHEMIETEK HPLC/MS Report

Ret. Time: 1.14

<<< POSITIVE SPECTRA >>>

