

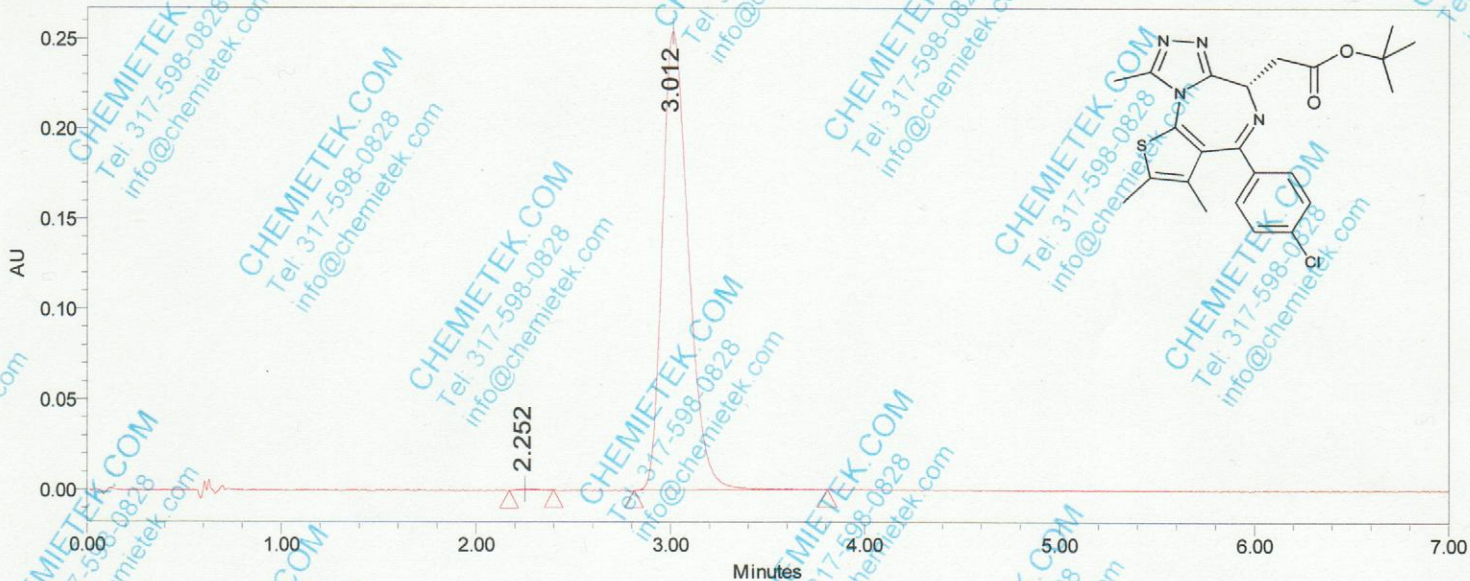
# CHEMIETEK Chiral HPLC Report\_AD

## SAMPLE INFORMATION

**Date Acquired:** 12/22/2015 4:02:56 PM  
**Sample Name:** (+)-JQ1-02  
**Vial:** 1:A,8  
**Injection Volume:** 1.00 ul  
**Acq. Method Set:** 2mL\_20 B4\_C2  
**Acquired By:** System  
**Column:** CHIRALPAK AD-3(4.6\*100mm,3um)  
**Co\_Solvent:** ETOH/ACN1/1  
**Column\_Temperature:** 35  
**Co\_Solvent%:** 20  
**Back\_Pressure:** 2000psi  
**Flow\_rate:** 2mL/min  
**Proc. Chnl. Descr.:** PDA 250.8 nm (210-400)nm  
**PDA\_Start\_Wavelength:** 200 nm  
**PDA\_Stop\_Wavelength:** 400 nm



Auto-Scaled Chromatogram



Peak Results

	RT	Height	Area	% Area
1	2.25	929	4842	0.20
2	3.01	254409	2384470	99.80





File D:\DATA\CT25\MONITOR\SP-15077685-S8-69536-LCMSA040.D

Injection Date : 21-Dec-15, 08:41:51

Tgt Mass (EZX) :

Sample Name : (+)-JQ1-02

Location : P1-D-05

Acq. Operator : 25monitor

Inj : 0

Spec. Reported : MS Integration

Inj Volume : 2 ul

Acq. Method : C:\CHEM32\1\METHODS\HPLC-A.M

Analysis Method : C:\CHEM32\1\METHODS\HPLC-A.M

Sample Info : Easy-Access Method: 'HPLC-A.M'

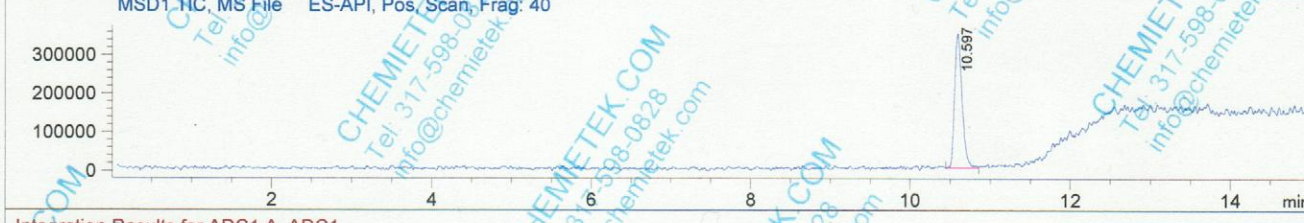
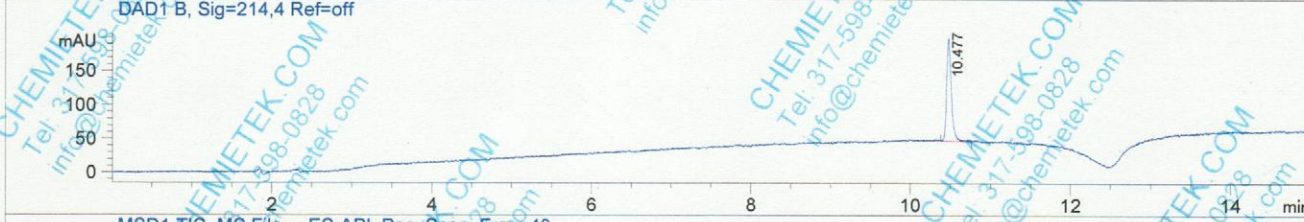
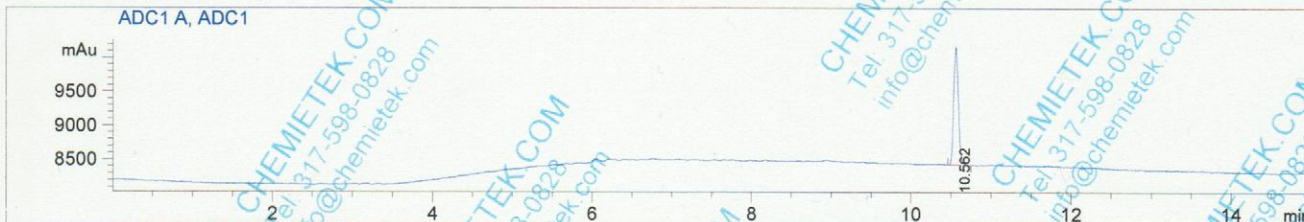
Method Info : Column: L-column2 ODS: 150 mm\*4.6 mm\*5.0 um;

Mobile Phase: A: Water (0.05% TFA) B: ACN (0.05%TFA) ;

Gradient: Pump1:B from 5% to 100% for 10 min and hold 100% for 5.0 min;

Flow Rate: 1.0 mL/min;

Column Temperature: 40 °C



Integration Results for ADC1 A, ADC1

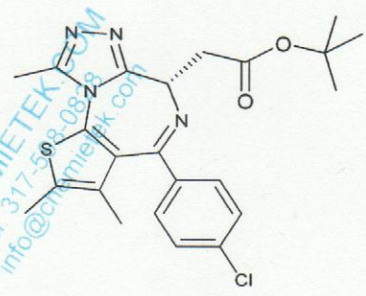
RetTim	Width	Area	Height	Area%
10.56	0.06	7035.65	1732.17	100.00

Integration Results for DAD1 A, Sig=254,4 Ref=off

RetTim	Width	Area	Height	Area%
10.48	0.06	876.75	213.73	100.00

Integration Results for DAD1 B, Sig=214,4 Ref=off

RetTim	Width	Area	Height	Area%
10.48	0.06	617.50	149.00	100.00



CHEMIETEK HPLC/MS Report

Ret. Time: 10.60

<<<< POSITIVE SPECTRA >>>>

