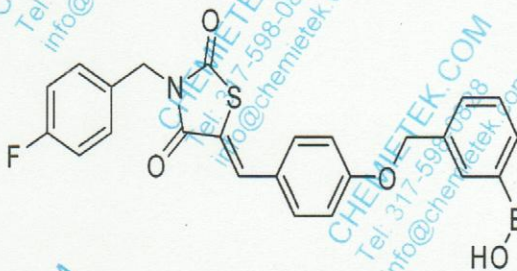
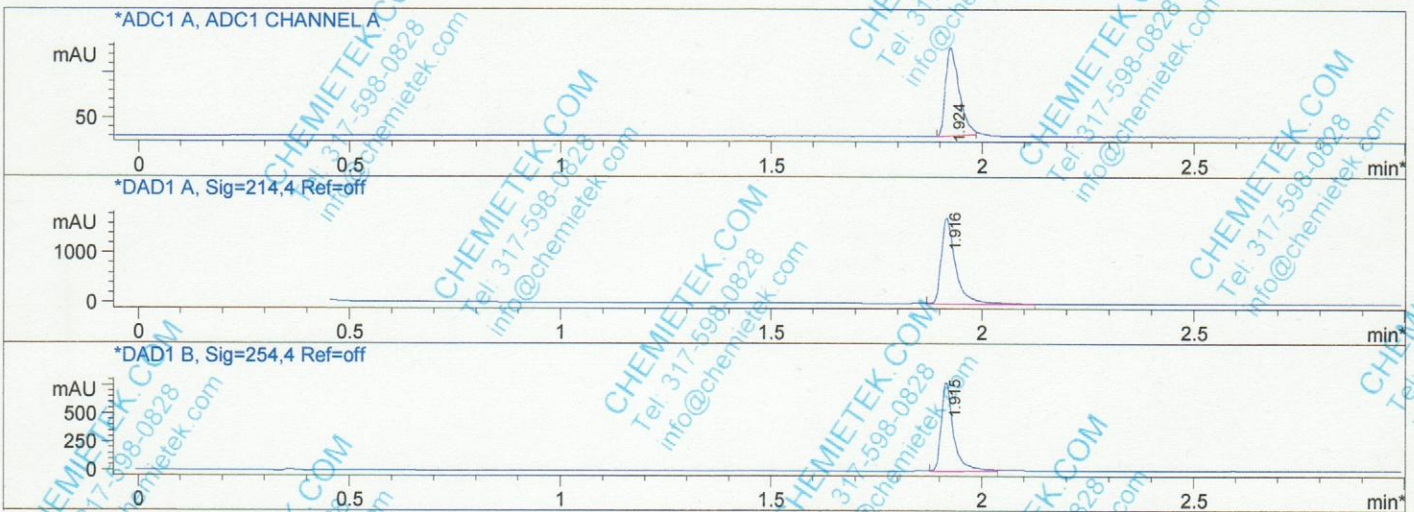


CHEMIETEK HPLC/MS Report

File D:\DATA\A02\MONITOR\HA-8-30-22248-LCMSA002.D

Sample Name : HA130, 01
 Acq. Operator : A02-MONITOR
 Spec. Reported : MS Integration
 Acq. Method : D:\METHODS\1-POS-3MIN-MON.M
 Analysis Method : D:\METHODS\1-POS-3MIN-MON.M
 Sample Info : Easy-Access Method: '1-POS-3MIN-MON' 463.00
 Method Info : Mobile Phase: A: water (0.01%TFA) B:ACN(0.01%TFA)
 Gradient: 5% to 95%B within 1.6 min
 Flow Rate : 2.0ml/min
 Column : SunFire C18, 4.6*50mm, 3.5um
 Oven Temperature : 50C

Tgt Mass (EZX) : 463.00
 Location : P1-C-08
 Inj : 1
 Inj Volume : 1 ul



Integration Results for ADC1 A, ADC1 CHANNEL A

RetTim	Width	Area	Height	Area%
1.92	0.03	43.63	19.32	100.00

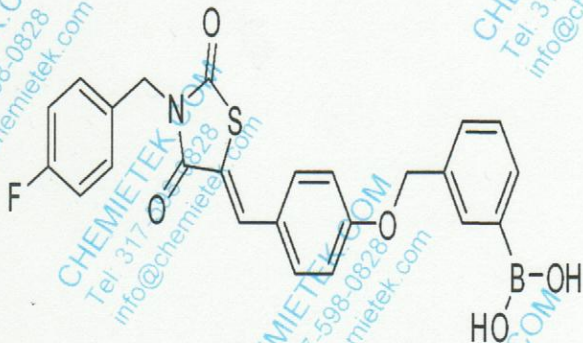
Integration Results for DAD1 A, Sig=214,4 Ref=off

RetTim	Width	Area	Height	Area%
1.92	0.04	4108.21	1732.36	100.00

Integration Results for DAD1 B, Sig=254,4 Ref=off

RetTim	Width	Area	Height	Area%
1.92	0.03	1590.00	784.48	100.00

CHEMIETEK HPLC/MS Report



Ret. Time: 1.93

