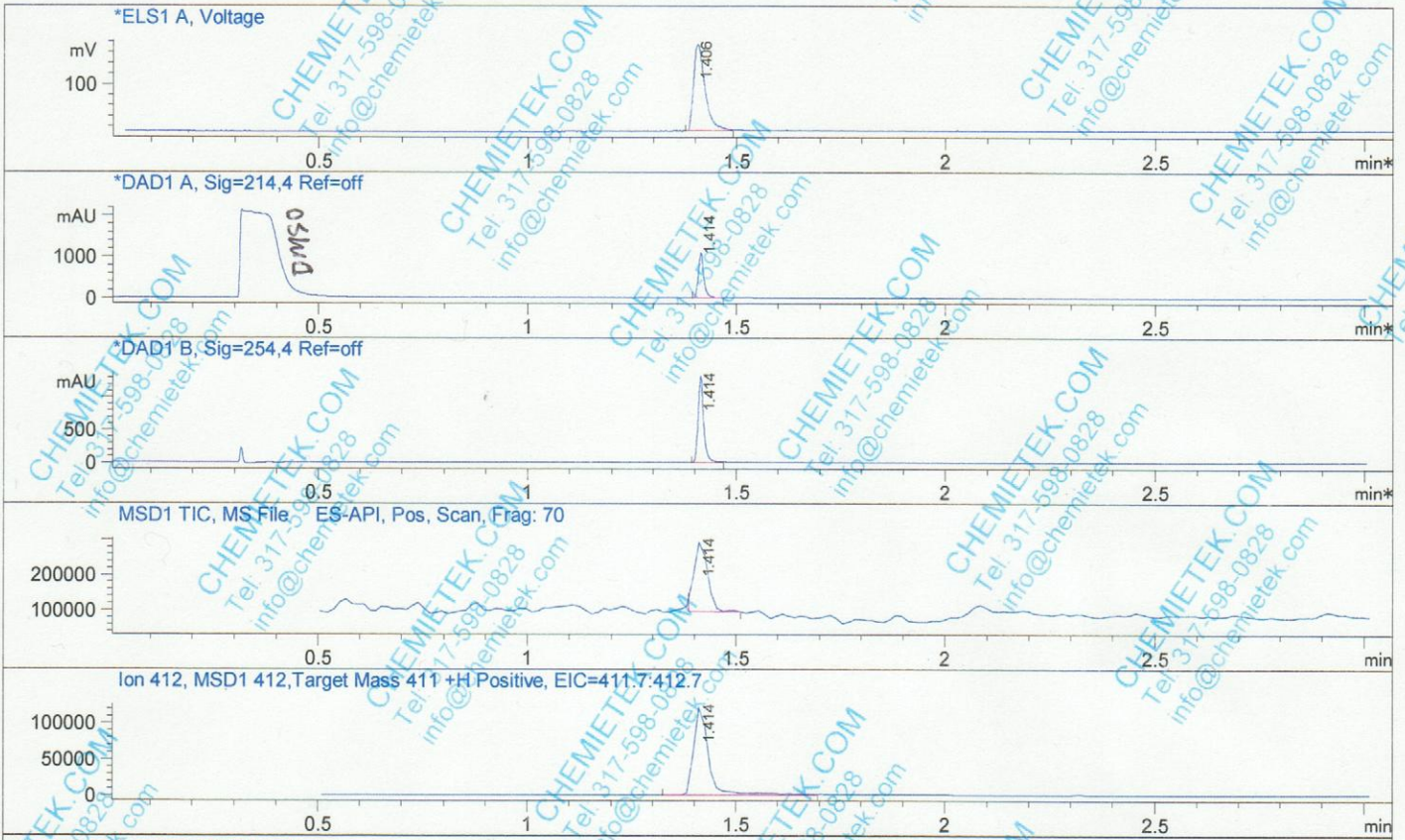


File D:\DATA\A02\MONITOR\GS9973-1-08368-LCMSA034.D

Injection Date : 23 Jun 14 12:42 pm +0800 Tgt Mass (EZX) : 411.00
 Sample Name : GS9973-1 Location : P1-C-03
 Acq. Operator : A02-Monitor Inj : 1
 Spec. Reported : MS Integration Inj Volume : 1 ul
 Acq. Method : D:\METHODS\1-POS-MON.M
 Analysis Method : D:\METHODS\1-POS-MON.M
 Sample Info : Easy-Access Method: '1-POS-MON' 411.00
 Method Info : Mobile Phase: A: water(0.01%TFA) B: ACN(0.01%TFA)
 Gradient: 5%-95% B in 1.3min
 Flow Rate: 2ml/min
 Column: Sunfire C18, 4.6*50mm,3.5um
 Oven Temperature: 50 C
 MS" ESI-POS Mass 103-1000



Integration Results for ELS1 A, Voltage

RetTim	Width	Area	Height	Area%
1.41	0.03	315.38	163.37	100.00

Integration Results for DAD1 A, Sig=214,4 Ref=off

RetTim	Width	Area	Height	Area%
1.41	0.01	983.67	4083.13	100.00

Integration Results for DAD1 B, Sig=254,4 Ref=off

RetTim	Width	Area	Height	Area%
1.41	0.01	1204.07	1315.61	100.00

CHEMIETEK HPLC-MS Report

Ret. Time: 1.41

<<<< POSITIVE SPECTRA >>>>

