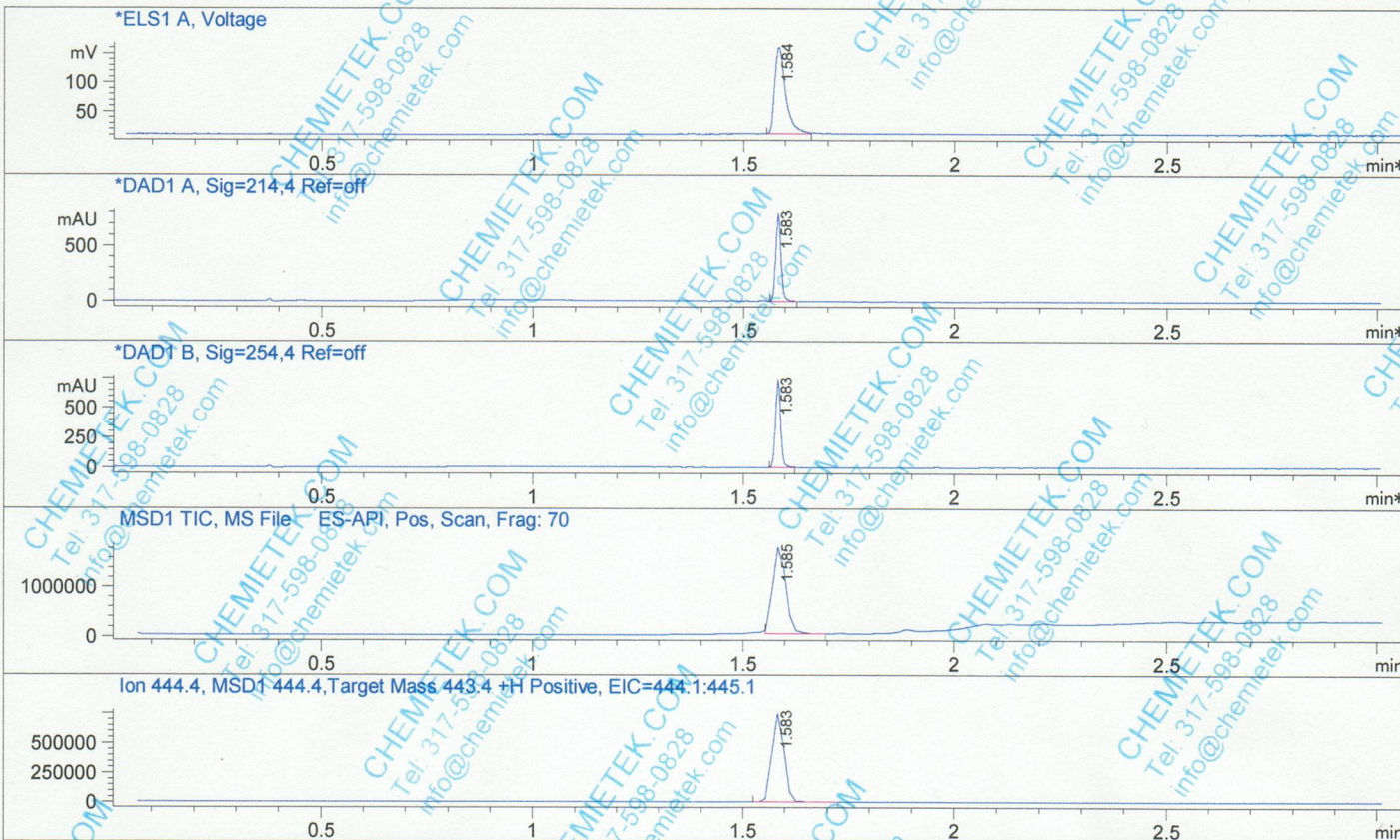


CHEMIETEK HPLC-MS Report

File D:\DATA\A02\MONITOR\GNE-7915-2-03707-LCMSA034.D

Injection Date : 9 Jan 14 12:56 pm +0800 Tgt Mass (EZX) : 443.40  
 Sample Name : **GNE-7915-2** Location : P2-F-08  
 Acq. Operator : A02-Monitor Inj : 1  
 Spec. Reported : MS Integration Inj Volume : 0.5 ul  
 Acq. Method : D:\METHODS\1-POS-MON.M  
 Analysis Method : D:\METHODS\1-POS-MON.M  
 Sample Info : 443.40  
 Method Info : Mobile Phase: A: water(0.01%TFA) B: ACN(0.01%TFA)  
 Gradient: 5%-95% B in 1.3min  
 Flow Rate: 2ml/min  
 Column: Sunfire C18, 4.6\*50mm, 3.5um  
 Oven Temperature: 50 C  
 MS" ESI-POS Mass 103-1000



Integration Results for ELS1 A, Voltage

RetTim	Width	Area	Height	Area%
1.58	0.02	274.97	150.07	100.00

Integration Results for DAD1 A, Sig=214,4 Ref=off

RetTim	Width	Area	Height	Area%
1.58	0.01	702.95	787.12	100.00

Integration Results for DAD1 B, Sig=254,4 Ref=off

RetTim	Width	Area	Height	Area%
1.58	0.01	647.56	730.11	100.00

# CHEMIETEK HPLC-MS Report



Ret. Time: 1.58

<<<< POSITIVE SPECTRA >>>>

