

File D:\DATA\A02\MONITOR\GLP-FP-44984-LCMSA001.D

Injection Date : 23 Sep 14 2:22 pm +0800

Tgt Mass (EZX) : 425.00

Sample Name : GLPG0634, 01

Location : P1-F-08

Acq. Operator : A02-Monitor

Inj : 1

Spec. Reported : MS Integration

Inj Volume : 1 ul

Acq. Method : D:\METHODS\1-POS-MON-1.M

Analysis Method : D:\METHODS\1-POS-3MIN.M

Sample Info : Easy-Access Method: '1-POS-MON-1' 425.00

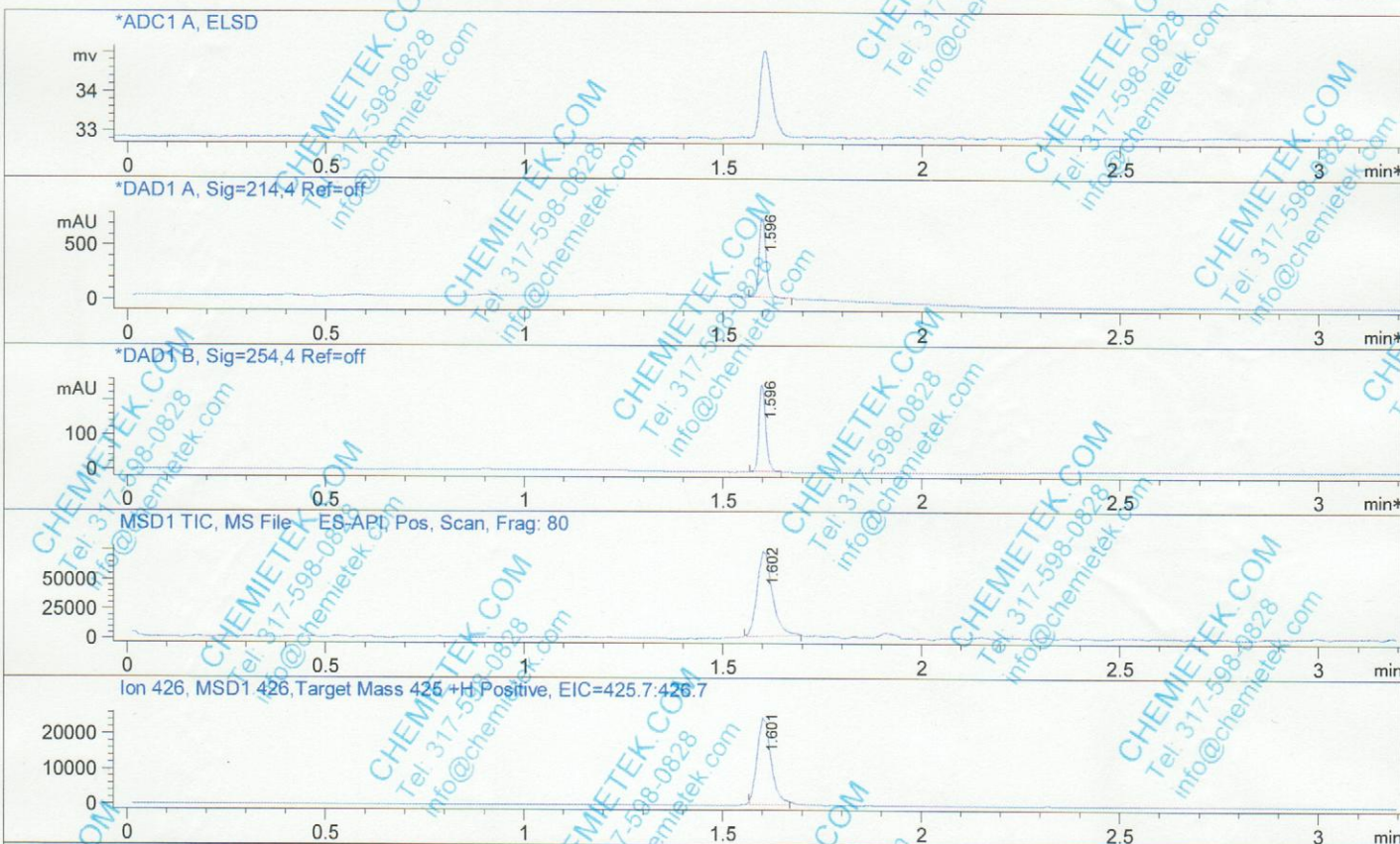
Method Info : Column:SunFire C18 (4.6x 50 mm,3.5 um)

Mobile phase: H2O(0.05%TFA) (A) / ACN(0.05%TFA) (B)

Elution program: Gradient from 5 to 100% of B in 1.3 min at 2ml/min

Temperature: 50°C

Detection: UV (214 , 4 nm) and MS (ESI, Pos mode, 110 to 1000 amu)



Integration Results for DAD1 A, Sig=214.4 Ref=off

RetTim	Width	Area	Height	Area%
1.60	0.02	909.74	736.83	100.00

Integration Results for DAD1 B, Sig=254.4 Ref=off

RetTim	Width	Area	Height	Area%
1.60	0.02	305.38	252.38	100.00

CHEMIETEK HPLC/MS Report

Ret. Time: 1.60

<<<< POSITIVE SPECTRA >>>>

