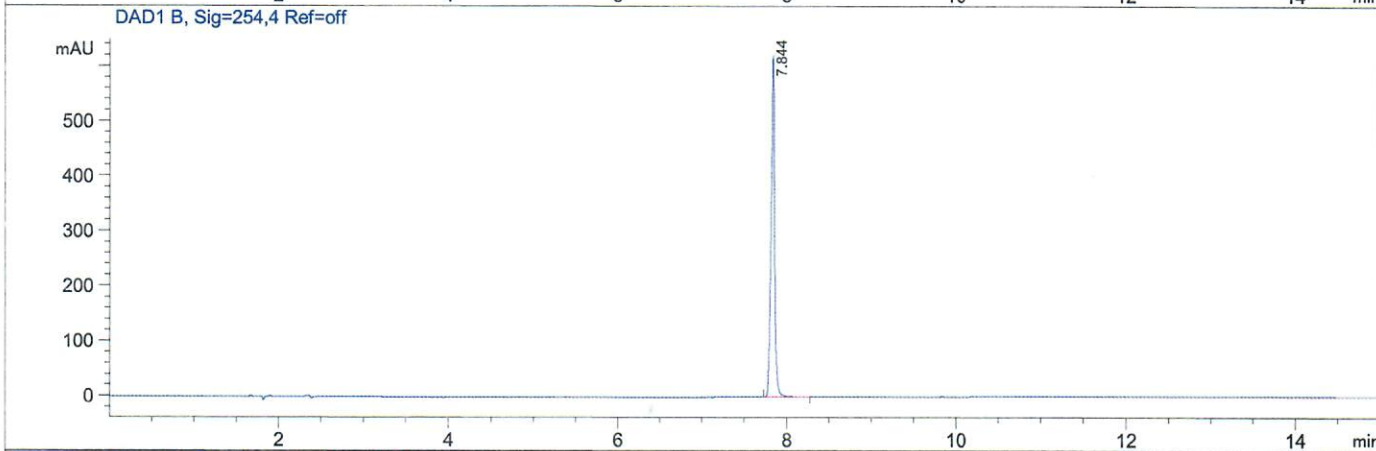
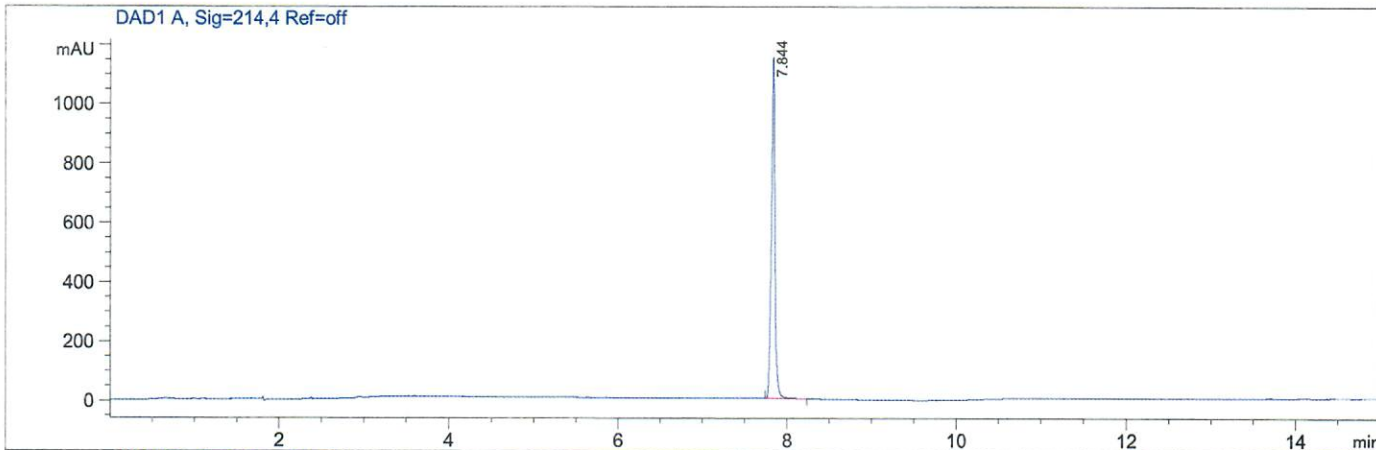


HPLC-MS Report

File D:\DATA\C52\MONITOR\CTK-0025062-017-20556-LCMSA013.D

Injection Date : 26-Dec-19, 18:19:34 Tgt Mass (EZX) : 242.00
 Sample Name : CT-CB103, 01 Location : P2-C-02
 Acq. Operator : C52-MONITOR Inj : 0
 Spec. Reported : MS Integration Inj Volume : 2 ul
 Acq. Method : D:\METHODS\2-HPLC-15MIN.M
 Analysis Method : D:\METHODS\2-HPLC-15MIN.M
 Sample Info : Easy-Access Method: '2-HPLC.M' 242.00
 Method Info : Mobile Phase: A: water(0.01%TFA) B: ACN(0.01%TFA)
 Gradient: 5% increase to 95%B within 7.5 min, 95%B for 7.5 min.
 Flow Rate: 1.0ml/min
 Column: Sunfire C18, 4.6*150mm, 3.5um
 Column Temperature: 45 C

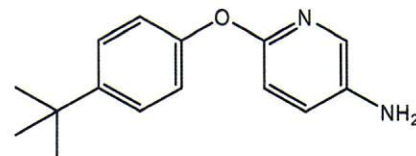


Integration Results for DAD1 A, Sig=214,4 Ref=off

RetTim	Width	Area	Height	Area%
7.84	0.04	3391.40	1150.20	100.00

Integration Results for DAD1 B, Sig=254,4 Ref=off

RetTim	Width	Area	Height	Area%
7.84	0.04	1818.45	618.93	100.00



HPLC-MS Report

Ret. Time: 7.85

<<< POSITIVE SPECTRA >>>

