

Sample Name: TL-TG-58

CHEMIETEK CT-BIRI, Lot 05



Acq. Operator : A02
 Acq. Instrument : HPLCA Location : P2-F-07
 Injection Date : 8/3/2020 4:52:33 PM
 Inj Volume : 1.5 µl

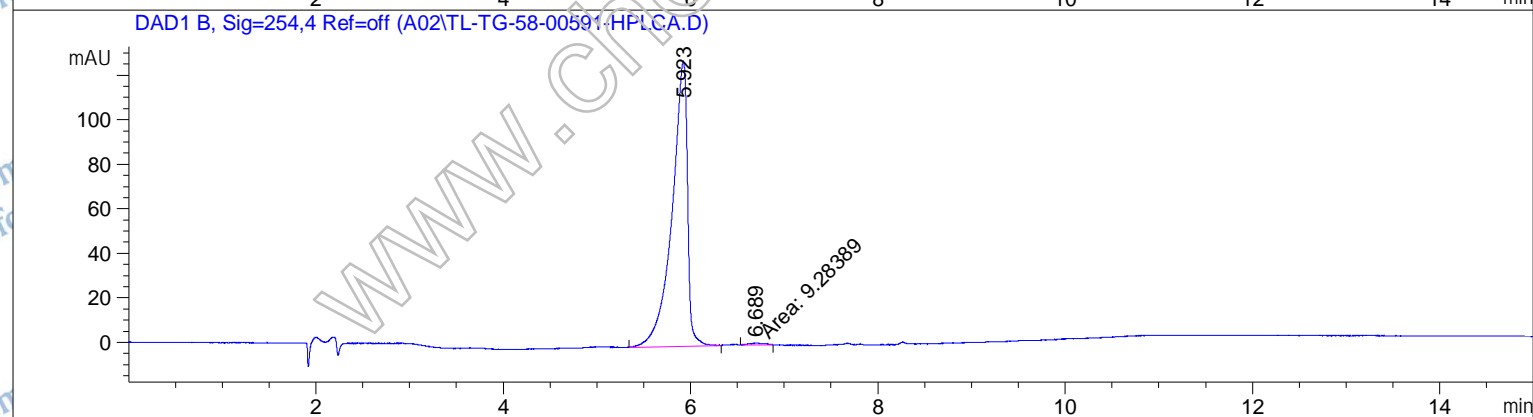
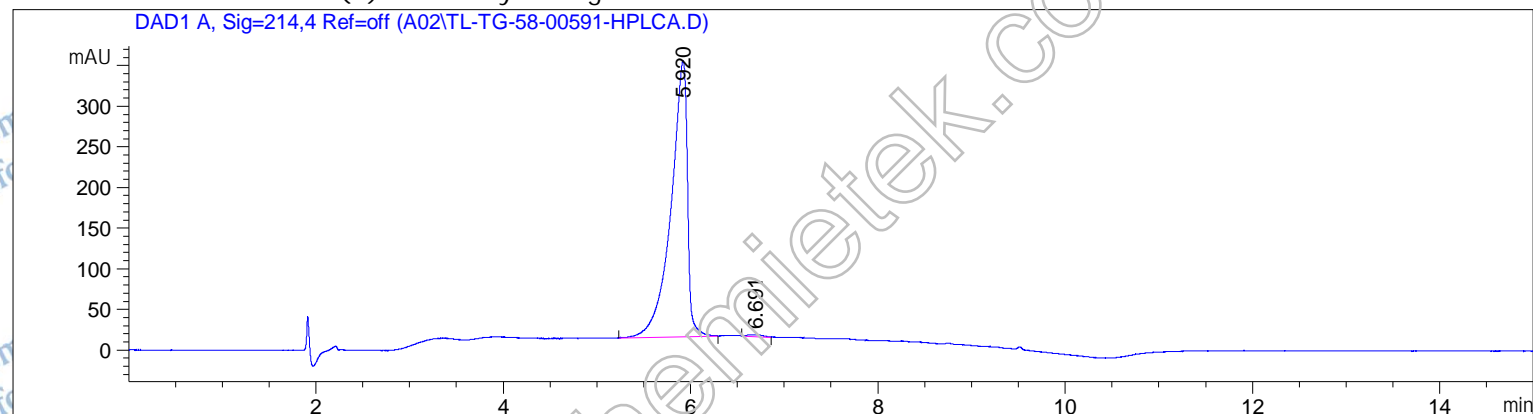
Acq. Method : C:\CHEM32\1\METHODS\2-HPLC-15MIN.M
 Last changed : 8/3/2020 4:52:23 PM
 (modified after Loading)

Analysis Method : C:\CHEM32\1\METHODS\2-HPLC-15MIN.M
 Last changed : 8/4/2020 9:21:07 AM
 (modified after Loading)

Method Info : Mobile Phase: A: water(0.05%TFA) B: ACN(0.05%TFA)
 Gradient: 5% increase to 95%B within 8 min, 95%B for 7 min.
 Flow Rate: 1.0ml/min
 Column: Luna C18(2), 4.6*150mm, 5µm
 Column Temperature: 40 C

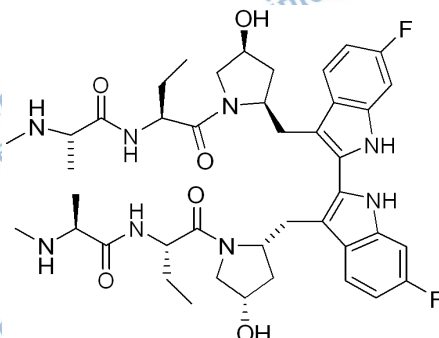
Sample Info : Easy Method: '2-HPLC-15MIN'

Additional Info : Peak(s) manually integrated



Area Percent Report

Sorted By : Signal
 Multiplier : 1.0000
 Dilution : 1.0000
 Use Multiplier & Dilution Factor with ISTDs



Sample Name: TL-TG-58

CHEMIETEK CT-BIRI, Lot 05

Signal 1: DAD1 A, Sig=214, 4 Ref=off

Peak #	RetTime [min]	Type	Width [min]	Area [mAU*s]	Height [mAU]	Area %
1	5.920	BB	0.1749	4150.88965	338.91400	99.4321
2	6.691	BB	0.1333	23.70632	2.20803	0.5679

Totals : 4174.59596 341.12204

Signal 2: DAD1 B, Sig=254, 4 Ref=off

Peak #	RetTime [min]	Type	Width [min]	Area [mAU*s]	Height [mAU]	Area %
1	5.923	BB	0.1648	1466.75281	127.84738	99.3710
2	6.689	MM	0.1947	9.28389	7.94909e-1	0.6290

Totals : 1476.03670 128.64229

*** End of Report ***