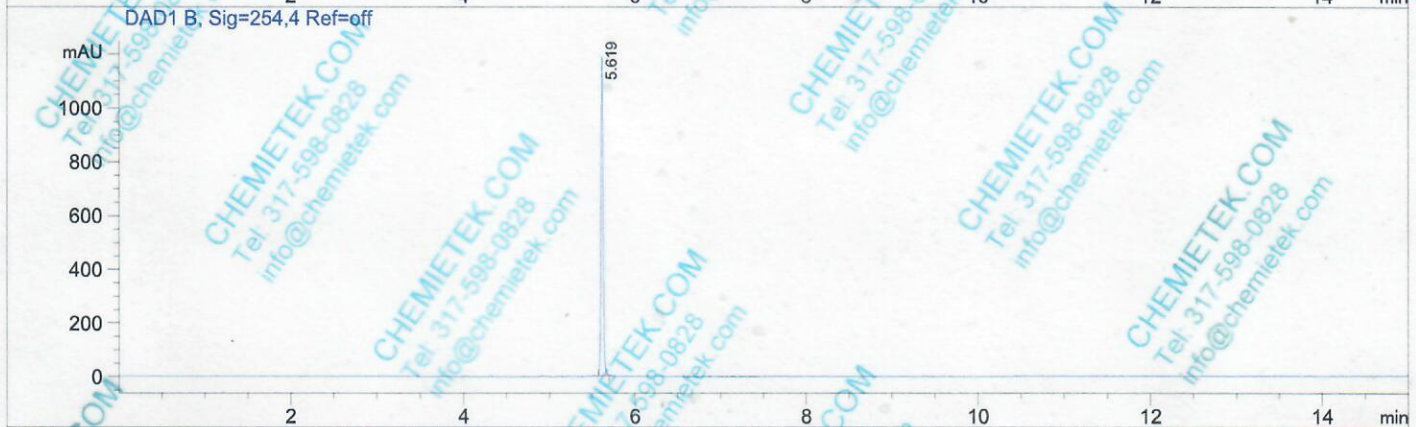
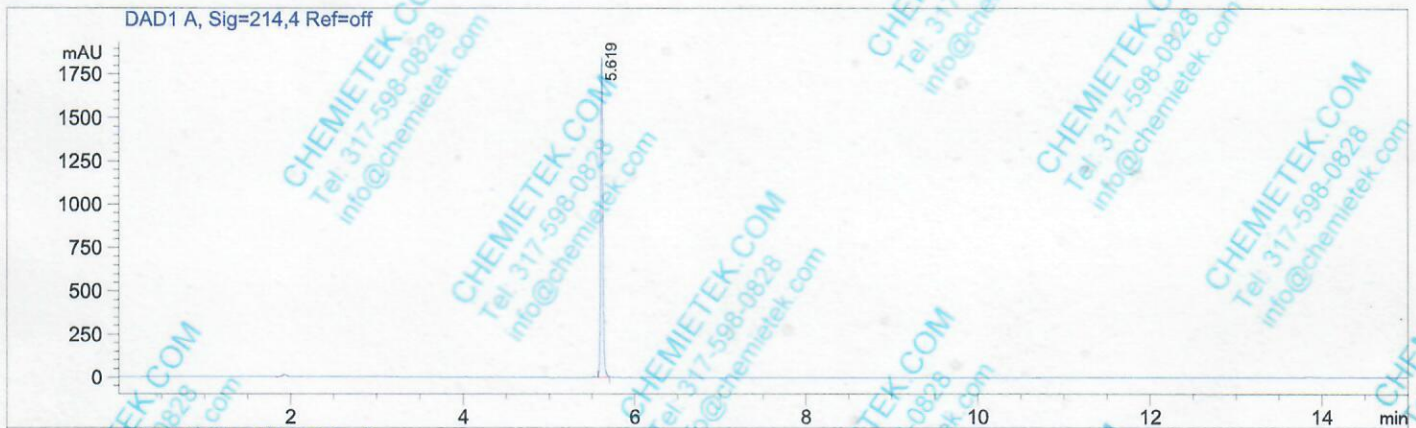


CHEMIETEK HPLC-MS Report

File D:\DATA\C52\MONITOR\CTK-0023313-026-P-55183-LCMSA041.D
 Injection Date : 17-May-19, 14:37:34 Tgt Mass (EZ) :
 Sample Name : CT-A7648 01 Location : P2-C-03
 Acq. Operator : C52-Monitor Inj : 0
 Spec. Reported : MS Integration Inj Volume : 0.5 ul
 Acq. Method : D:\METHODS\2-HPLC-15MIN.M
 Analysis Method : D:\METHODS\2-HPLC-15MIN.M
 Sample Info : Easy-Access Method: '2-HPLC-15MIN.M'
 Method Info : Column: XBRIGE C18 (4.6x 150 mm, 3.5um)
 Mobile phase: H2O(10 mmol NH4HCO3) (A) / ACN(B)
 Elution program: Gradient from 5 to 95% of B in 8min at 1.0ml/min
 Temperature: 40 °C
 Detection: UV (214 , 4 nm) and MS (ESI, Pos mode ,110 to 1000 amu)

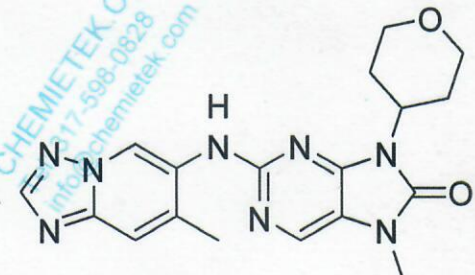


Integration Results for DAD1 A, Sig=214,4 Ref=off

RetTim	Width	Area	Height	Area%
5.62	0.03	3390.93	1842.60	100.00

Integration Results for DAD1 B, Sig=254,4 Ref=off

RetTim	Width	Area	Height	Area%
5.62	0.03	2159.20	1188.61	100.00



CHEMIETEK HPLC/MS Report

Ret. Time: 5.62

<<<< POSITIVE SPECTRA >>>>

