

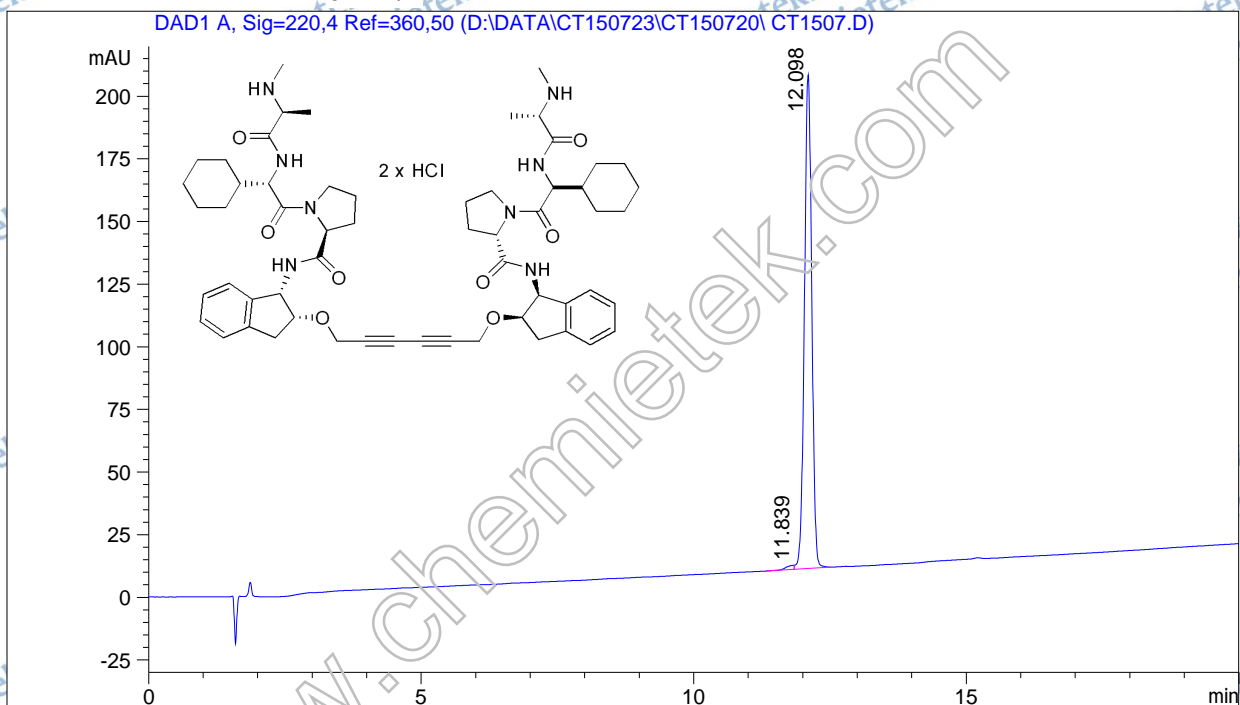


CHEMIETEK HPLC Report

Filename : D:\DATA\CT150723\CT150720\CT1507.D

Compound ID : AZD5582, 01
Sample ID : CT3187-22-P1B
Mobile Phase : A: 0.1%TFA in H2O B: 0.1%TFA in ACN
Flow : 1.0ml/min
Column : Gemini-NX C18 5um 110A 150*4.6mm
Instrument : Agilent 1200 HPLC-BE(1-614)

Batch Datafile : D e f a u l t Location : 99
Acq Method : D:\DATA\CT150723\CT150720\CT1507.D Inj. Vol. : 3.0 ul
3MIN.M



Area Percent Report

Signal->:DAD1 A, Sig=220,4 Ref=360,50

Peak #	RT [min]	Height	Height %	Width [min]	Area	Area %
1	11.839	1.644	0.827	0.168	16.546	0.888
2	12.098	197.202	99.173	0.156	1847.461	99.112