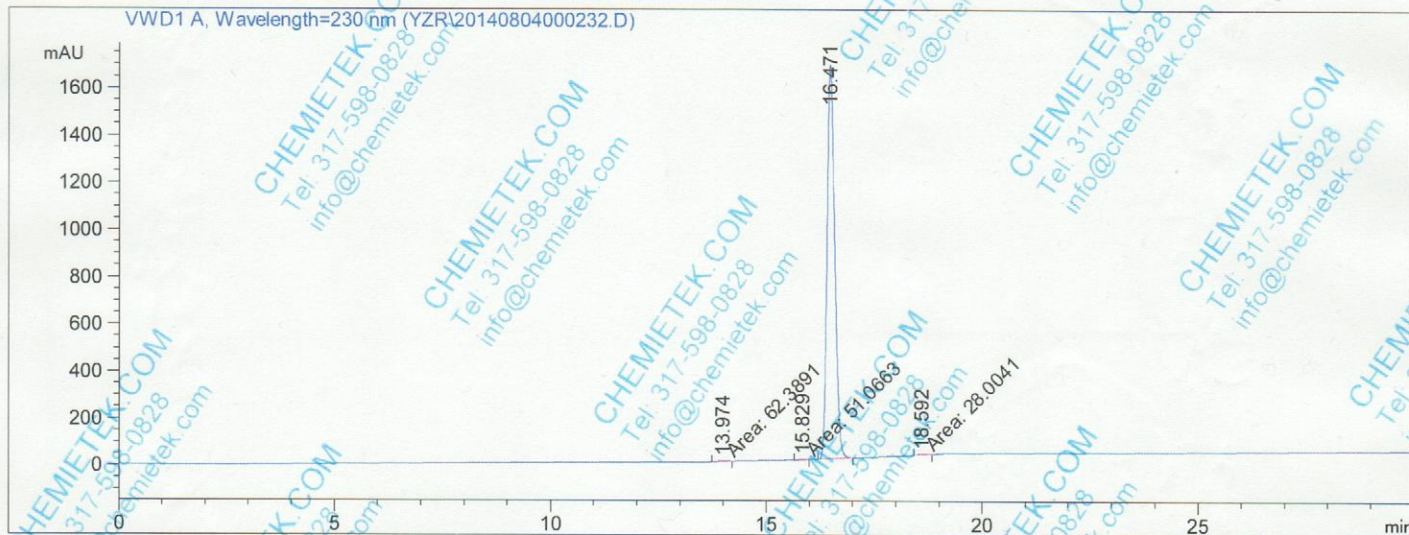




```

=====
Acq. Operator   : YZR
Acq. Instrument : HPLC 1                               Location : Vial 1
Injection Date  : 11/09/2014 10:18:40
Acq. Method    : C:\CHEM32\1\METHODS\DEF_LC.M
Last changed   : 11/09/2014 10:10:59 by YZR
                (modified after loading)
Analysis Method : C:\CHEM32\1\METHODS\DEF_LC.M
Last changed   : 11/09/2014 10:49:08 by YZR
                (modified after loading)
    
```



Area Percent Report

```

Sorted By      : Signal
Multiplier:    : 1.0000
Dilution:      : 1.0000
Use Multiplier & Dilution Factor with ISTDs
    
```

Signal 1: VWD1 A, Wavelength=230 nm

Peak #	RetTime [min]	Type	Width [min]	Area mAU*s	Height [mAU]	Area %
1	13.974	MM	0.3125	62.38912	3.32740	0.3029
2	15.829	MM	0.2771	51.06632	3.07153	0.2479
3	16.471	BB	0.1894	2.04571e4	1670.84106	99.3133
4	18.592	MM	0.1773	28.00412	2.63212	0.1360

Totals : 2.05986e4 1679.87212