

CHEMIETEK HPLC/MS Report

File D:\DATA\A02\MONITOR\ABT263-05-LCMSA031.D

Injection Date : 11 Jun 19 4:24 pm +0800

Sample Name : ABT263 05

Acq. Operator : A02-Monitor

Spec. Reported : MS Integration

Acq. Method : D:\METHODS\2-POS-15MIN.M

Analysis Method : D:\METHODS\2-POS-15MIN.M

Sample Info : Easy-Access Method: '2-POS-15MIN'

Method Info : Mobile Phase: A: Water(0.01%TFA) B : ACN(0.01%TFA)

Gradient: 5% B increase to 95% B within 9 min,

95% B for 6 min, back to 5% B within 0.1 min.

Flow Rate: 1.0 mL/min

Column: SunFire C18 4.6\*150 mm 3.5 um

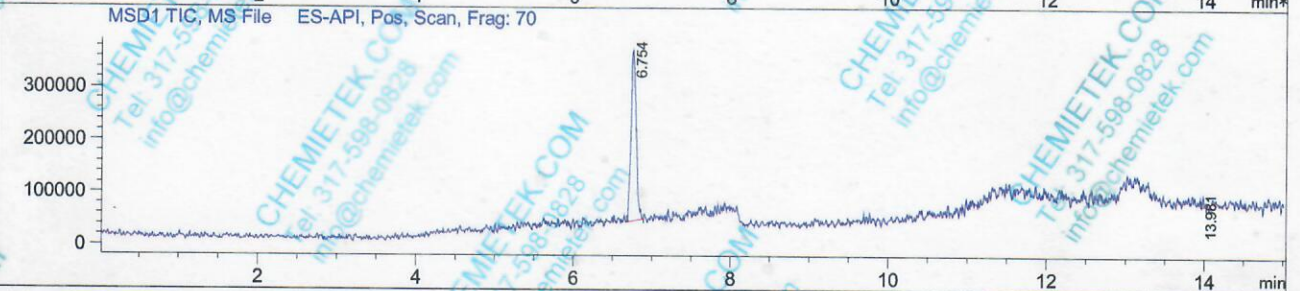
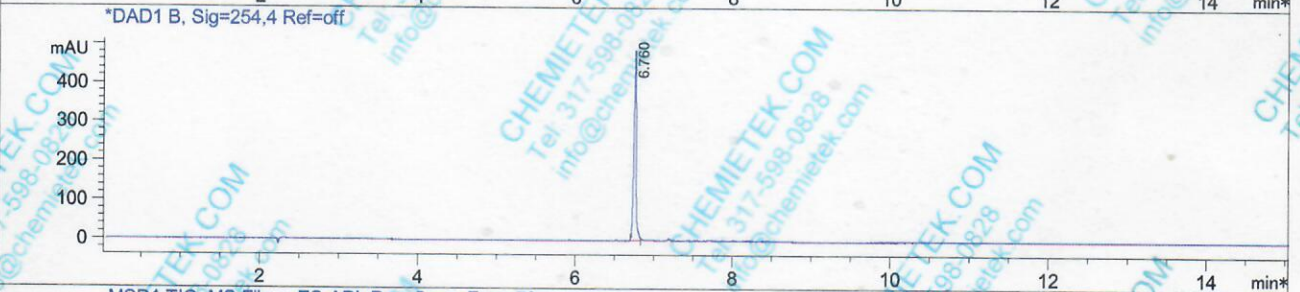
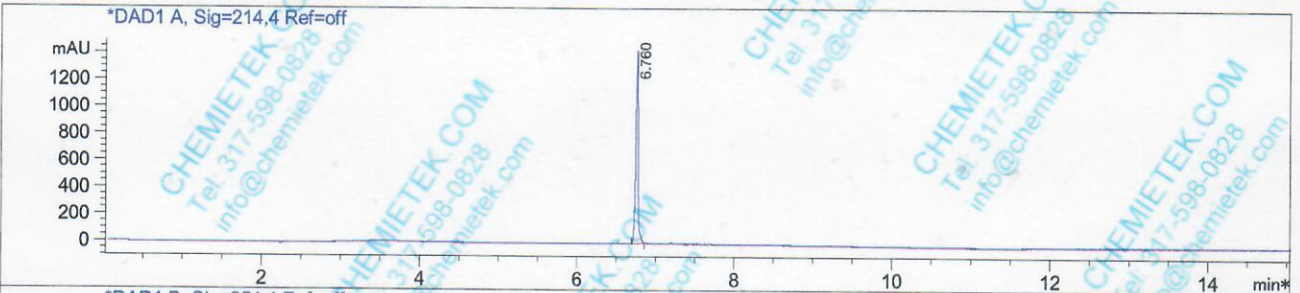
Oven Temperature: 40 C

Tgt Mass (EZ) :

Location : P2-D-02

Inj : 1

Inj Volume : 2 ul

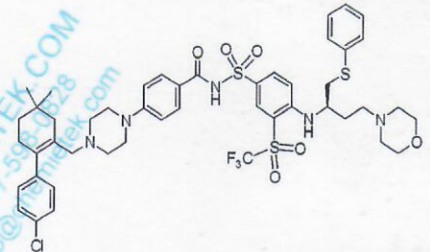


Integration Results for DAD1 A, Sig=214,4 Ref=off

RetTim	Width	Area	Height	Area%
6.76	0.03	3120.38	1431.07	100.00

Integration Results for DAD1 B, Sig=254,4 Ref=off

RetTim	Width	Area	Height	Area%
6.76	0.03	1044.70	486.66	100.00



CHEMIETEK HPLC/MS Report

Ret. Time: 6.75

<<<< POSITIVE SPECTRA >>>>

