

File D:\DATA\A06\MONITOR\CT-IACS13909-01-P-5963-LCMSA013.D

Injection Date : 17 Nov 20 7:15 pm +0800

Tgt Mass(EZX) : 376.00

Sample Name : CT-IACS13909-01

Location : P2-F-01

Acq. Operator : A06-MONITOR

Inj : 1

Spec. Reported : MS Integration

Inj Volume : 1.5 ul

Acq. Method : D:\METHODS\QC-HPLC-15MIN.M

Analysis Method : D:\METHODS\QC-HPLC-15MIN.M

Sample Info : QC-15MIN Method: 'QC-15MIN' 376.00

Method Info : Mobile Phase: A: water(0.01%TFA) B: ACN(0.01%TFA)

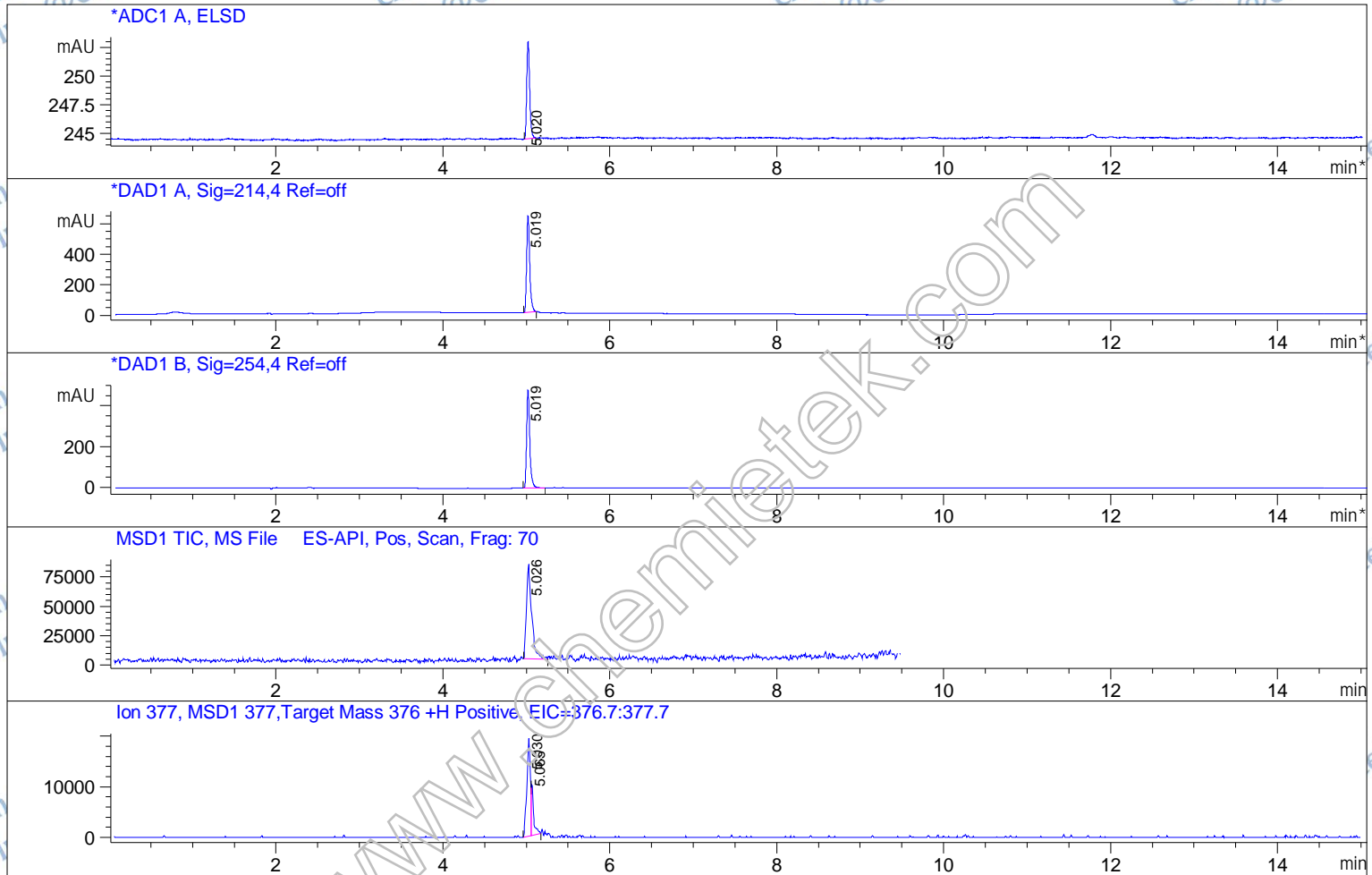
Gradient: 5% increase to 95%B within 7.5 min, 95%B for 7.5 min.

Flow Rate: 1.0ml/min

Column: XXXXXXXXXX

Column Temperature: 45 C

Detection:UV(214,4nm) and MS(ESI,Pos mode,110 to 1500 amu)



Integration Results for ADC1 A, ELSD

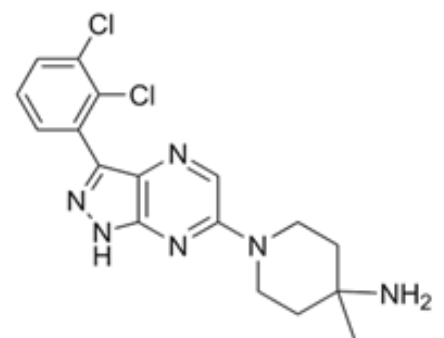
RetTim	Width	Area	Height	Area%
5.02	0.04	20.61	8.47	100.00

Integration Results for DAD1 A, Sig=214,4 Ref=off

RetTim	Width	Area	Height	Area%
5.02	0.04	1617.96	631.22	100.00

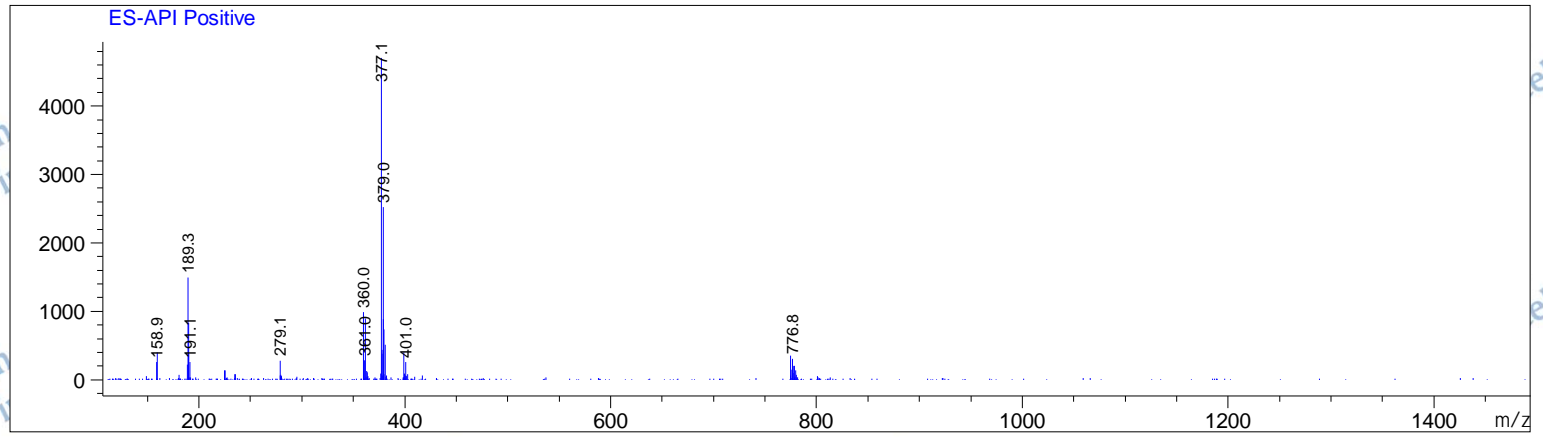
Integration Results for DAD1 B, Sig=254,4 Ref=off

RetTim	Width	Area	Height	Area%
5.02	0.04	1262.92	480.73	100.00



Ret. Time: 5.03

<<<< POSITIVE SPECTRA >>>>



chemietek.com
info@chemietek.com

chemietek.com
info@chemietek.com

chemietek.com
info@chemietek.com

chemietek.com
info@chemietek.com