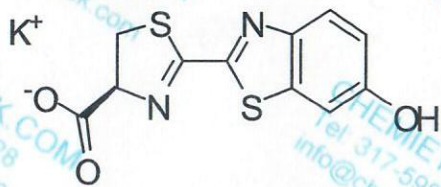
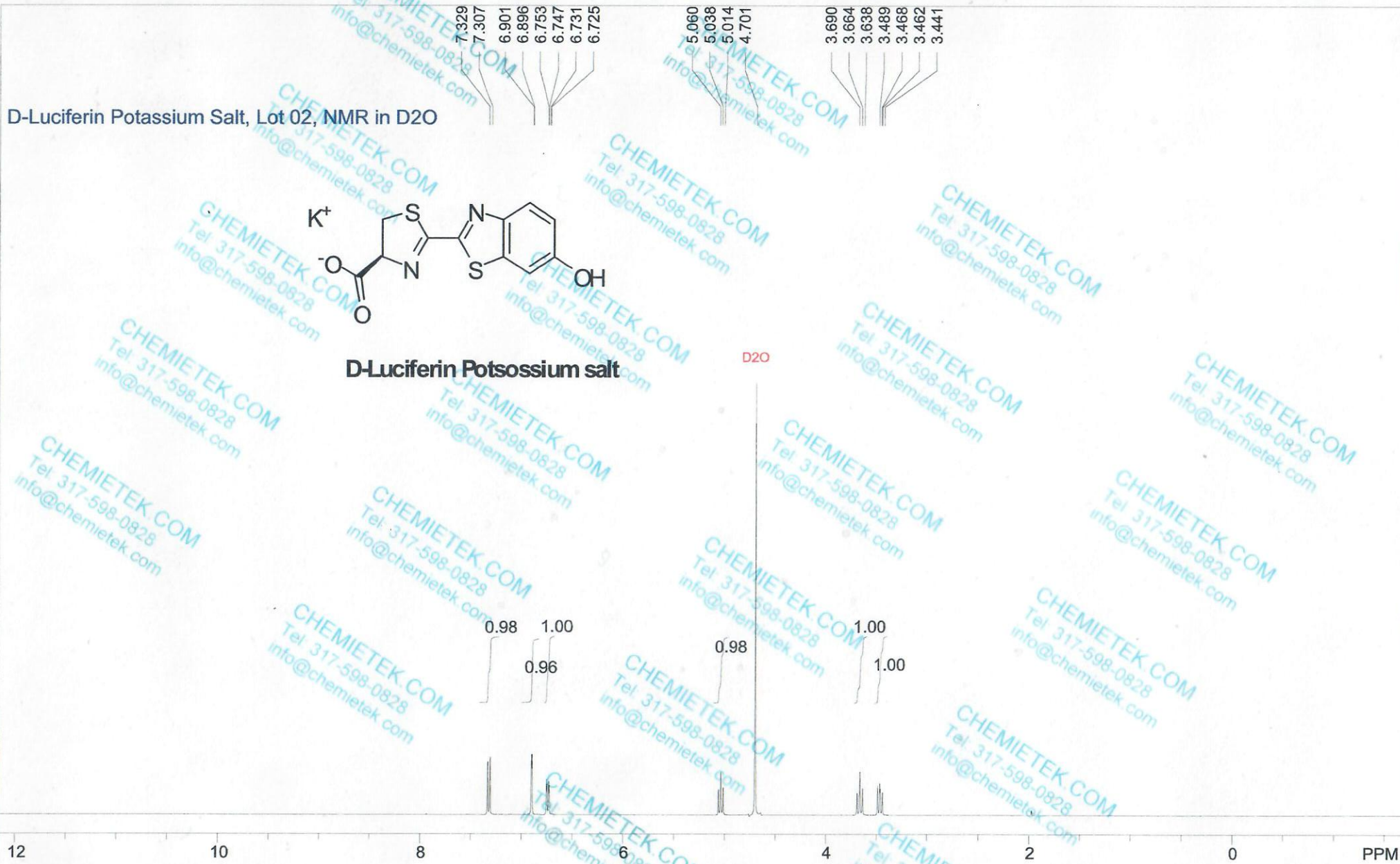


D-Luciferin Potassium Salt, Lot 02, NMR in D2O



D-Luciferin Potassium salt



spect, D2O,	F2: 1.000	SW1: 8013	OF1: 2471.0	USER: nmr -- DATE: Fri Apr 22 08:24:01 2016
F1: 400.132		PW: 13.0 usec	NA: 16	PTS1d: 65536
EX: zg30		PD: 1.0 sec	LB: 0.0	Nuts - Spdata