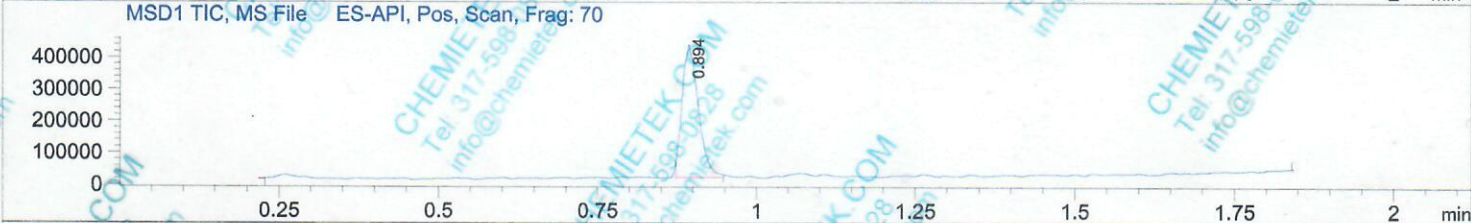
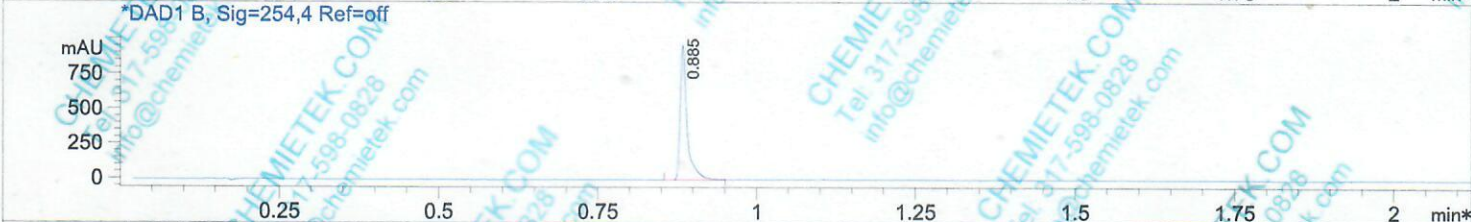
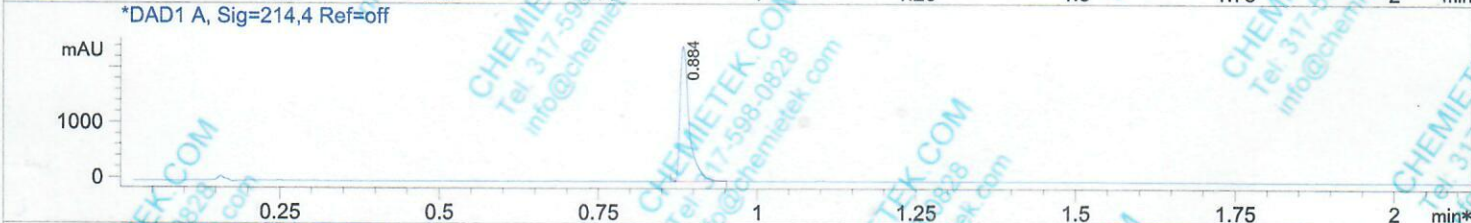
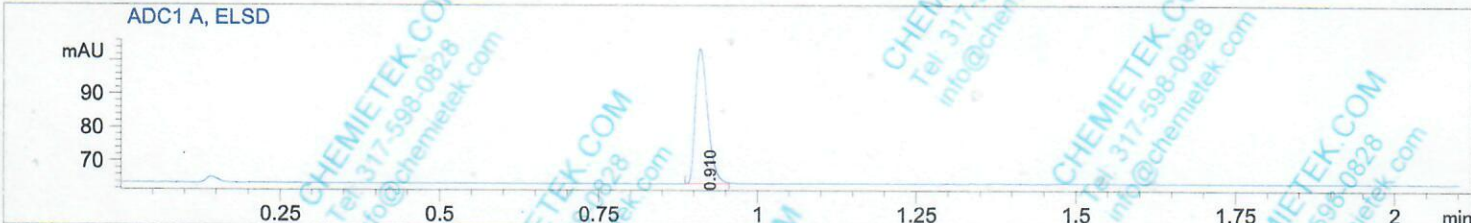


File D:\DATA\A02\MONITOR\D-K-00333-LCMSA035.D
 Injection Date : 22 Apr 16 1:06 pm +0800 Tgt Mass (EZX) :
 Sample Name : D-Luciferin, K Salt 2 Location : P1-D-06
 Acq. Operator : A02-MONITOR Inj : 1
 Spec. Reported : MS Integration Inj Volume : 1 ul
 Acq. Method : D:\METHODS\1-POS-3MIN.M
 Analysis Method : D:\METHODS\1-POS-3MIN.M
 Sample Info : Easy-Access Method: '1-POS-3MIN'
 Method Info : Mobile Phase: A: water(0.01%TFA) B: ACN(0.01%TFA)
 Gradient: 5%-95% B in 1.5min
 Flow Rate: 1.5 ml/min
 Column: SunFire C18,3*30mm,2.5um
 Oven Temperature: 50 C
 Mass Range: 110-1500



Integration Results for ADC1 A, ELSD

RetTim	Width	Area	Height	Area%
0.91	0.02	53.97	40.26	100.00

Integration Results for DAD1 A, Sig=214,4 Ref=off

RetTim	Width	Area	Height	Area%
0.88	0.02	2543.98	2409.83	100.00

Integration Results for DAD1 B, Sig=254,4 Ref=off

RetTim	Width	Area	Height	Area%
0.88	0.02	746.49	875.29	100.00

Ret. Time: 0.89

ES-API Positive

