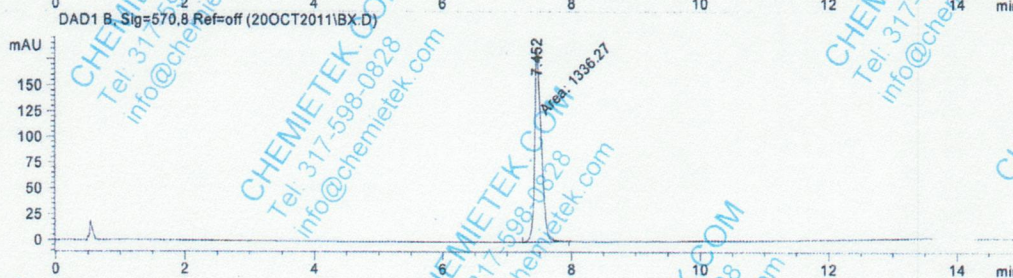
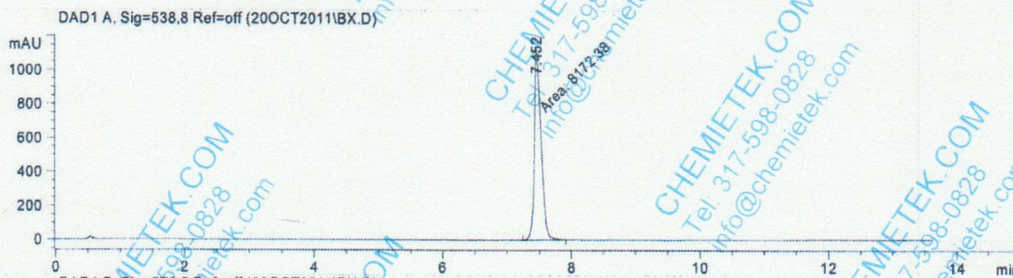




=====

Acq. Operator :		Seq. Line :	2
Acq. Instrument :	Instrument 1	Location :	Vial 1
Injection Date :	10/19/2011 1:49:01 PM	Inj :	1
		Inj Volume :	20 µl
Method :	C:\CHEM32\1\METHODS\GRADIENT20-538 NM.M		
Last changed :	10/19/2011 1:21:46 PM		
Method Info :	20-95% MeOH, 15 min + H2O pH=5 (0.1% formic acid) flow:1ml/min, Agilent zorbax C8, 4.6x50mm, 3.5um		



=====
Area Percent Report
=====

Sorted By : Signal
Multiplier : 1.0000
Dilution : 1.0000
Use Multiplier & Dilution Factor with ISTDs

Signal 1: DAD1 A, Sig=538.8 Ref=off

Peak #	RetTime [min]	Type	Width [min]	Area [mAU*s]	Height [mAU]	Area %
1	7.452	MM T	0.1187	8172.38086	1147.91858	100.0000

Totals : 8172.38086 1147.91858