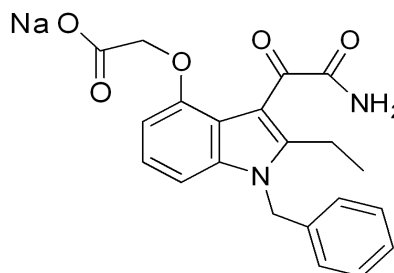




=== Shimadzu LCsolution Analysis Report ===

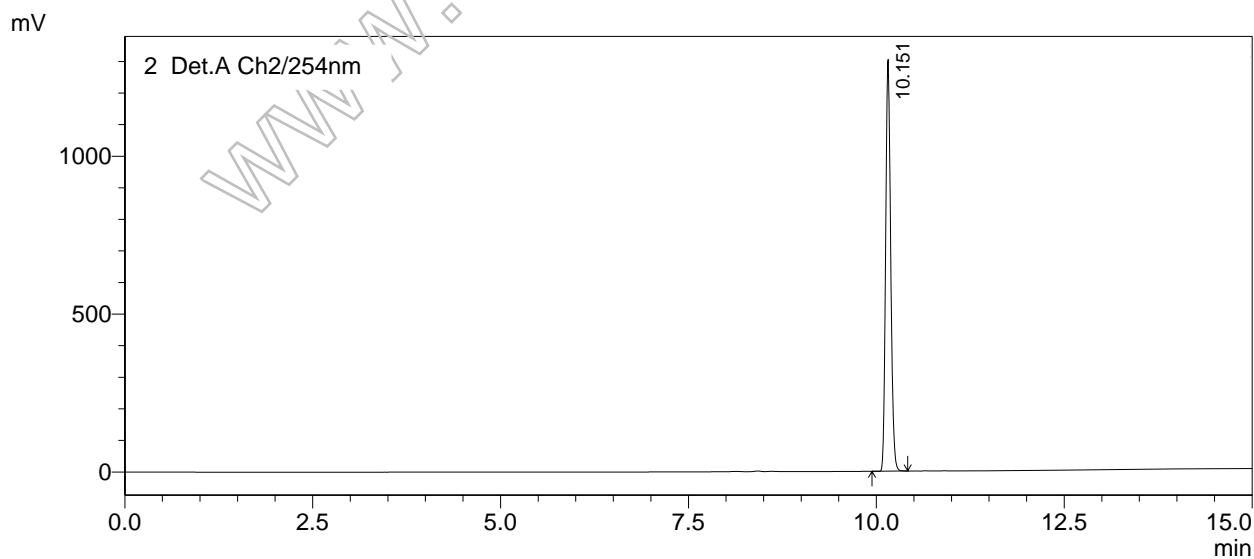
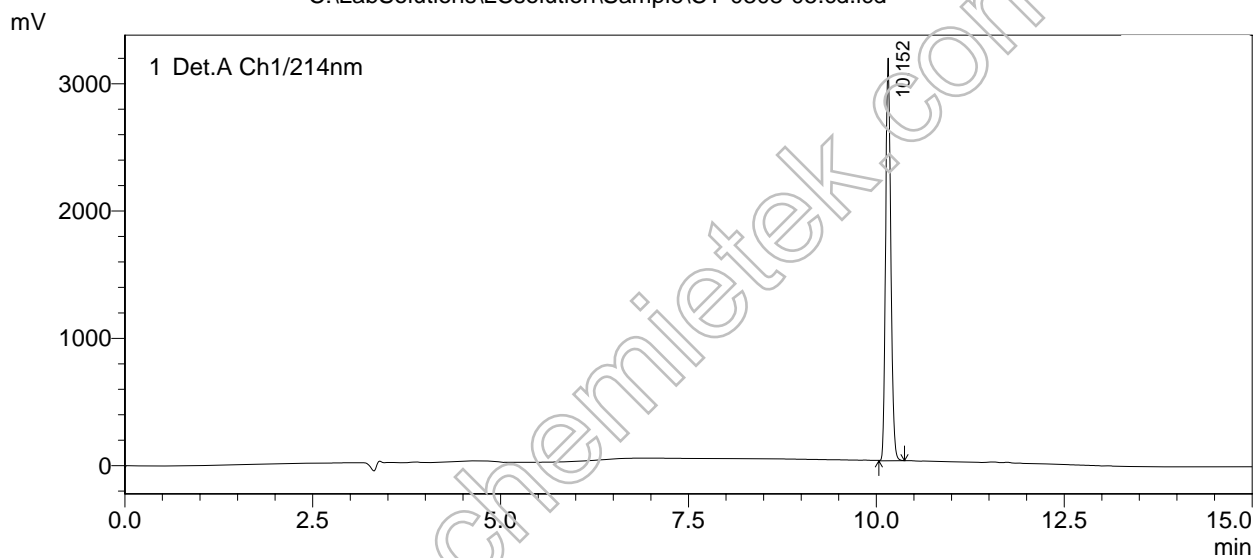
C:\LabSolutions\LCsolution\Sample\CT-0308-05.cd.lcd

Acquired by : Admin
Sample Name : Varespladib Sodium Lot 01
Sample ID : Default-0308-05
Vial # : 1-1
Injection Volume : 20 uL
Data File Name : CT-0308-05.cd.lcd
Method File Name : HPLC-15min.lcm
Batch File Name : Default-0308-05
Report File Name : HPLC.lcr



<Chromatogram>

C:\LabSolutions\LCsolution\Sample\CT-0308-05.cd.lcd



PeakTable

Detector A Ch1 214nm

Peak#	Ret. Time	Area	Height	Area %	Height %
1	10.152	15320592	3162259	100.000	100.000
Total		15320592	3162259	100.000	100.000

PeakTable

Detector A Ch2 254nm

Peak#	Ret. Time	Area	Height	Area %	Height %
1	10.151	6141591	1303854	100.000	100.000
Total		6141591	1303854	100.000	100.000

www.chemietek.com