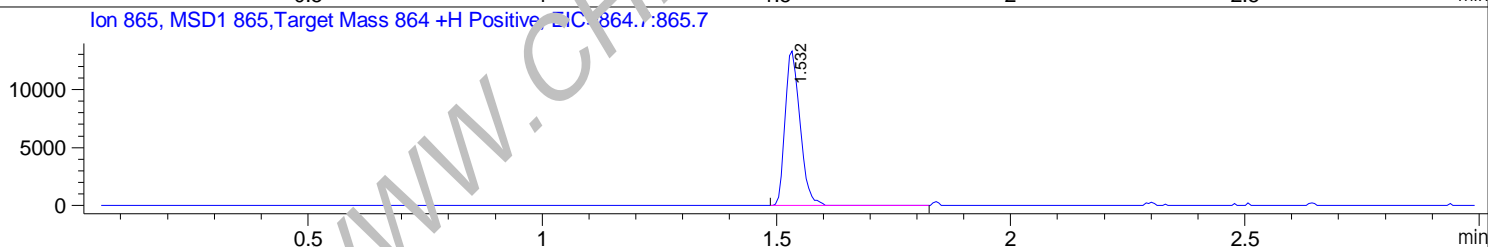
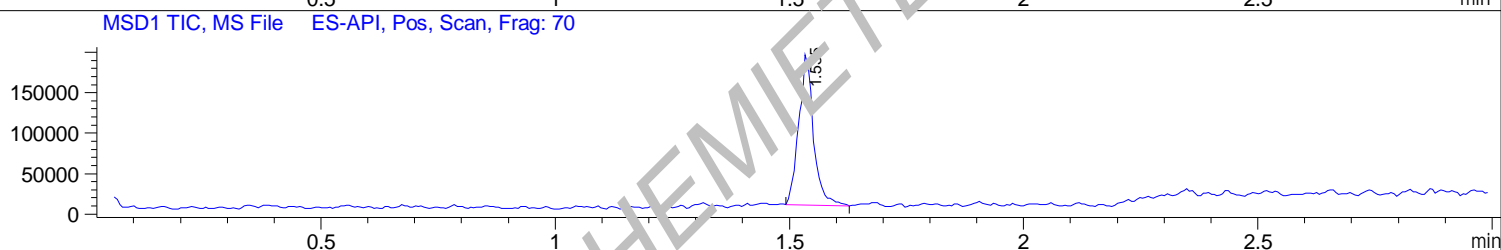
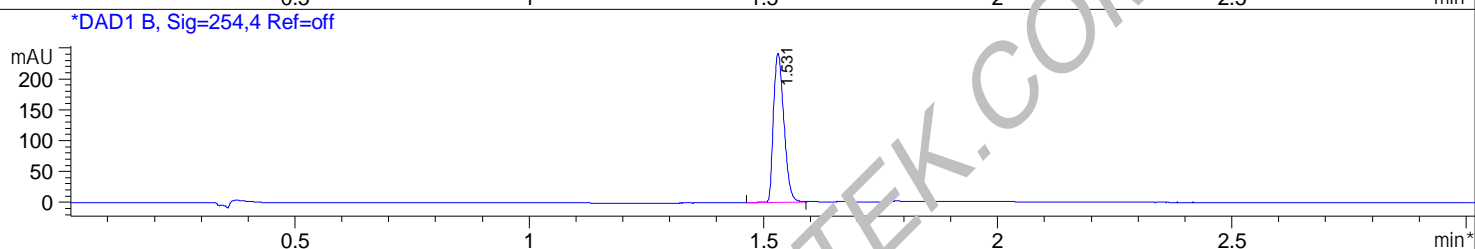
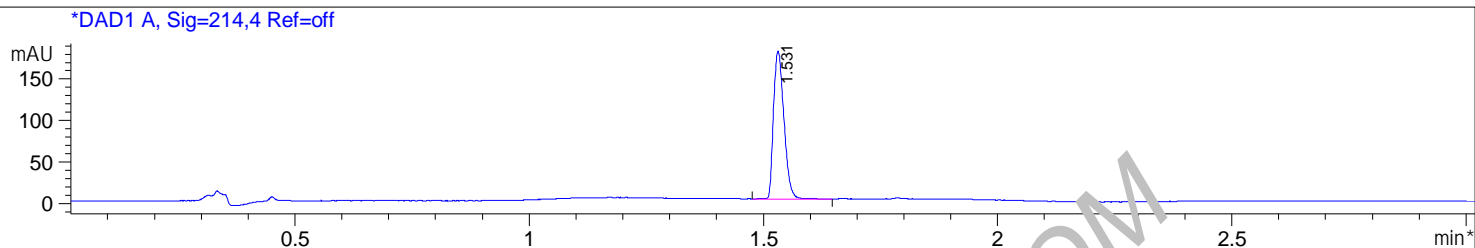


File D:\DATA\C66\MONITOR\RMC7977-01-44434-LCMSA023.D



Sample Name : RMC-7977 Lot 01
Acq. Operator : Default
Spec. Reported : MS Integration
Acq. Method : D:\METHODS\1-CHEMIELAB-HPLC-3MIN.M
Analysis Method : D:\METHODS\1-CHEMIELAB-HPLC-3MIN.M
Sample Info : CHEMIELAB HPLC Method: '1-CHEMIELAB-HPLC-3MIN.M
Method Info : Default Method

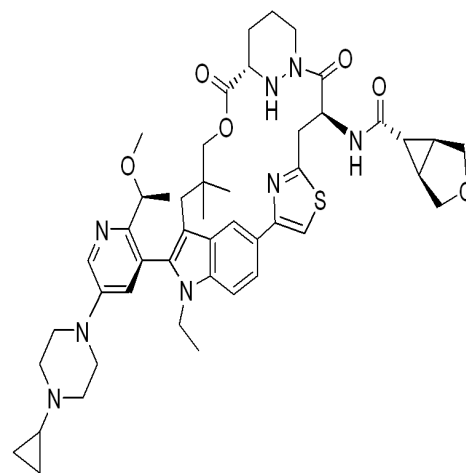


Integration Results for DAD1 A, Sig=214,4 Ref=off

RetTim	Width	Area	Height	Area%
1.53	0.02	277.89	178.54	100.00

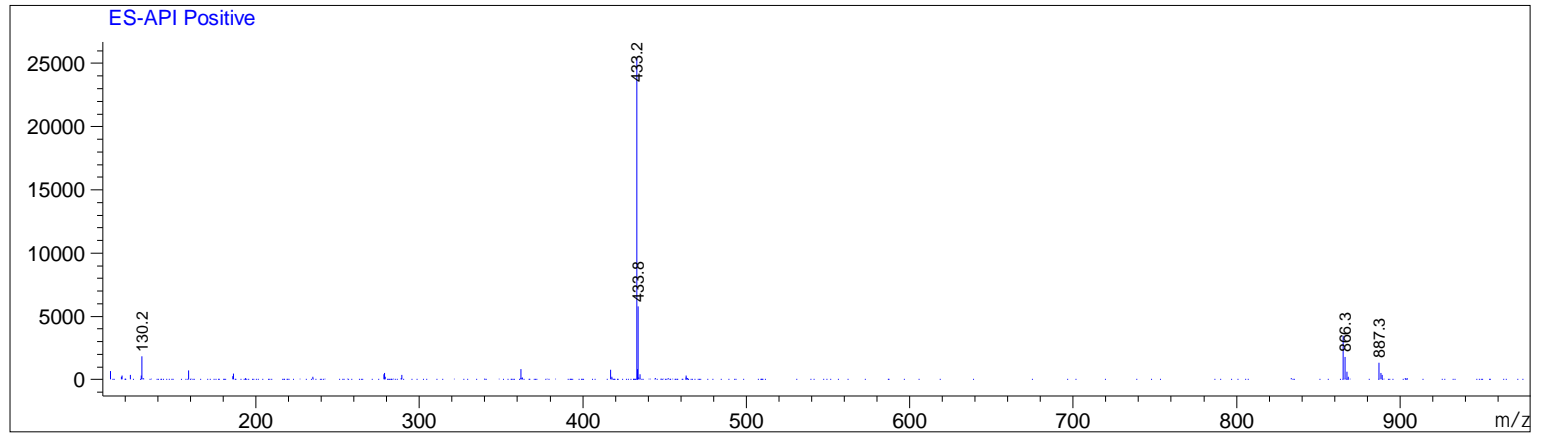
Integration Results for DAD1 B, Sig=254,4 Ref=off

RetTim	Width	Area	Height	Area%
1.53	0.02	371.51	241.07	100.00



Ret. Time: 1.54

<<<< POSITIVE SPECTRA >>>>



WWW.CHEMIETEK.COM