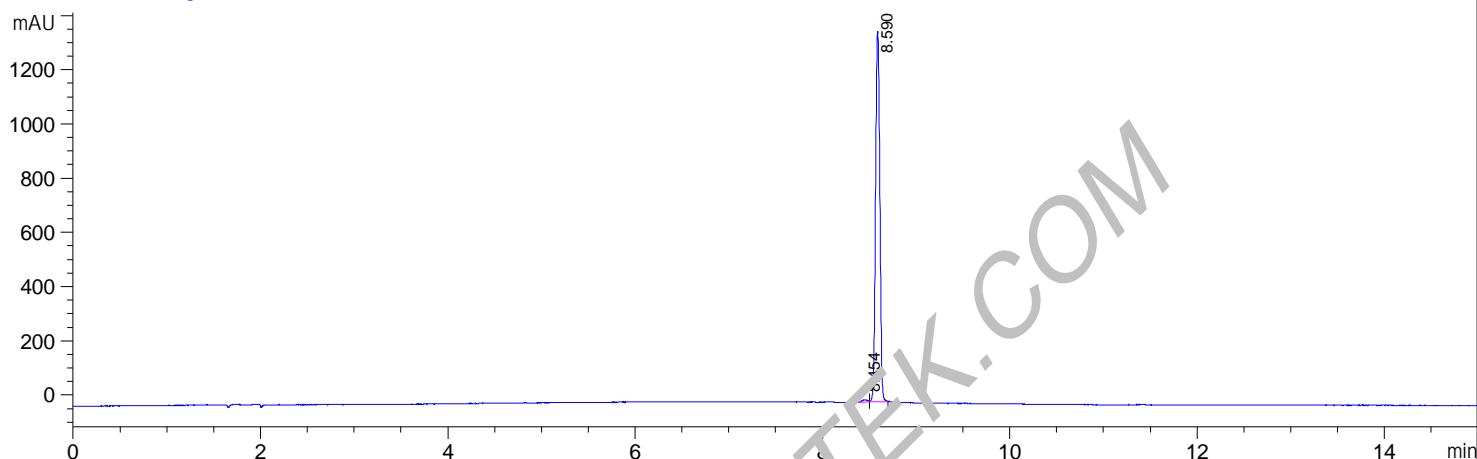




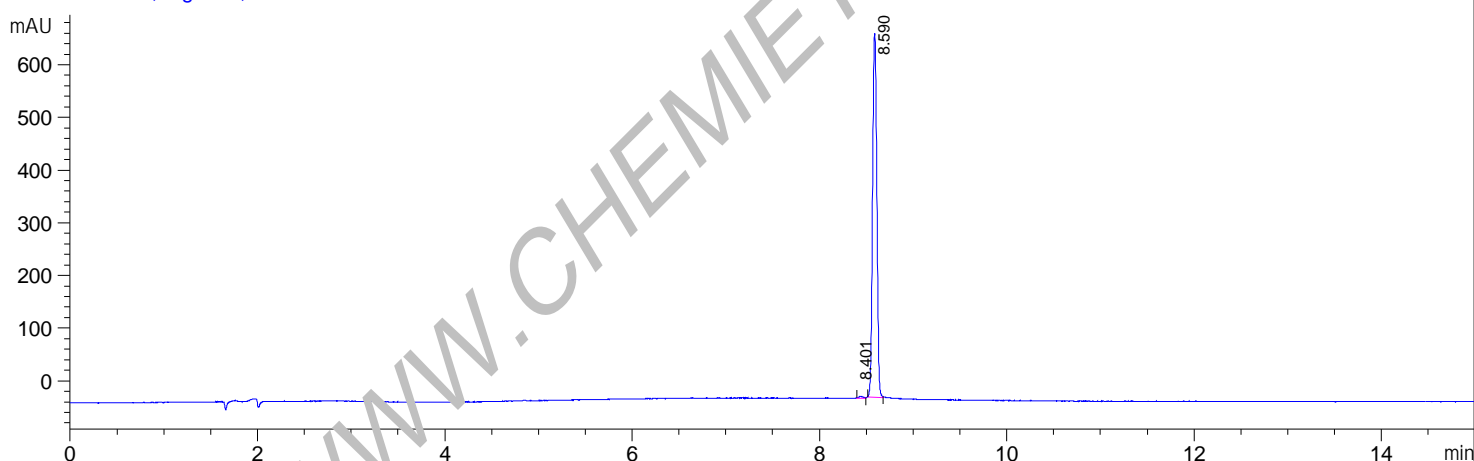
**Sample Name** : RMC-6291 Lot 01  
**Acq. Operator** : Default  
**Spec. Reported** : MS Integration  
**Acq. Method** : D:\METHODS\2-HPLC-15MIN.M  
**Analysis Method** : D:\METHODS\2-HPLC-15MIN.M  
**Sample Info** : Easy-Access Method: '2-HPLC-15MIN.M'  
**Method Info** :

**Mobile phase**: A: Water (10mmolNH<sub>4</sub>HCO<sub>3</sub>) B: ACN  
**Elution program**: Gradient from 10 to 95% of B in 8 min at 1 ml/min  
**Column Temperature**: 45 °C  
**Detection**: UV (214 , 4 nm)

DAD1 A, Sig=214,4 Ref=off



DAD1 B, Sig=254,4 Ref=off



Integration Results for DAD1 A, Sig=214,4 Ref=off

RetTim	Width	Area	Height	Area%
8.45	0.05	39.12	9.40	0.89
8.59	0.05	4333.51	1368.06	99.11

Integration Results for DAD1 B, Sig=254,4 Ref=off

RetTim	Width	Area	Height	Area%
8.40	0.06	11.47	0.86	0.52
8.59	0.05	2175.44	691.15	99.48

