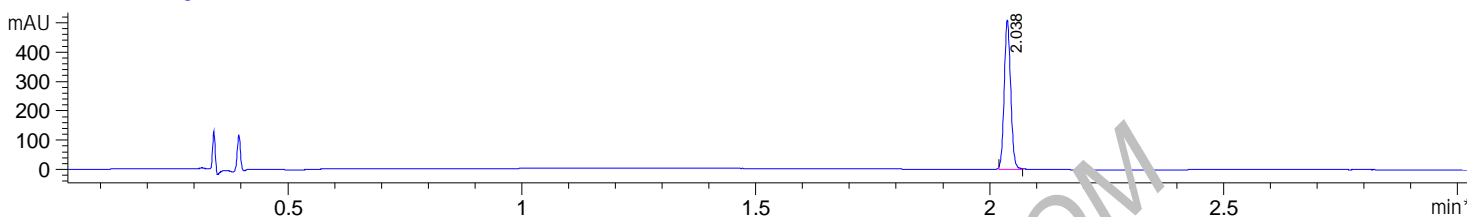


File D:\DATA\C66\MONITOR\RMC6236-01-67588-LCMSA027.D

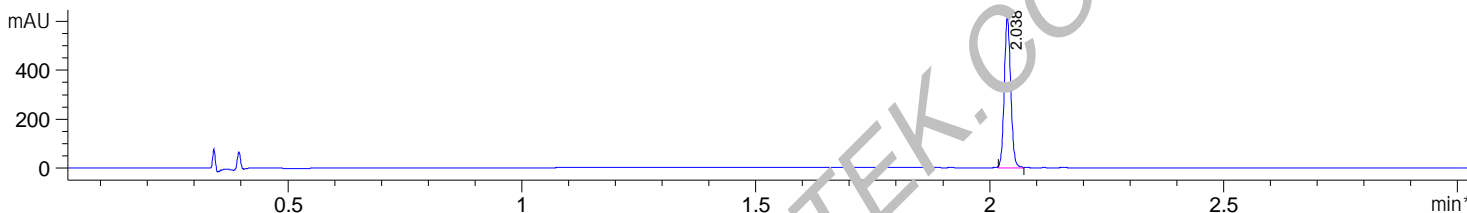


Sample Name : RMC-6236 Lot 01
 Acq. Operator : ADMIN
 Spec. Reported : MS Integration
 Acq. Method : D:\METHODS\1-CHEMIELAB-HPLC-3MIN.M
 Analysis Method : D:\METHODS\1-CHEMIELAB-HPLC-3MIN.M
 Sample Info : CHEMIELAB HPLC Method: '1-CHEMIELAB-HPLC-3MIN.M
 Method Info : Default Method

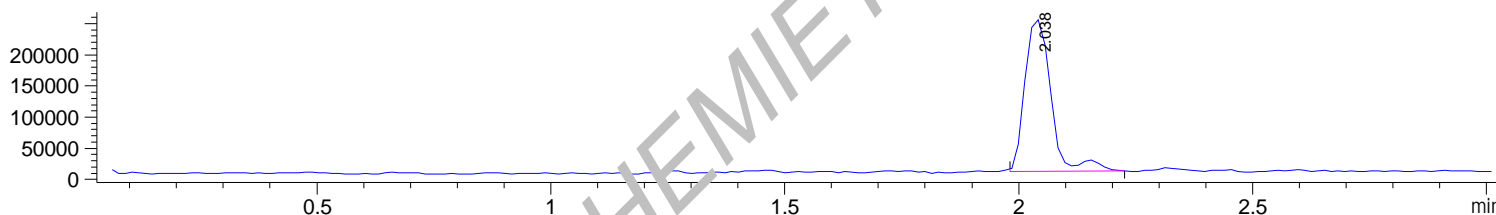
*DAD1 A, Sig=214,4 Ref=off



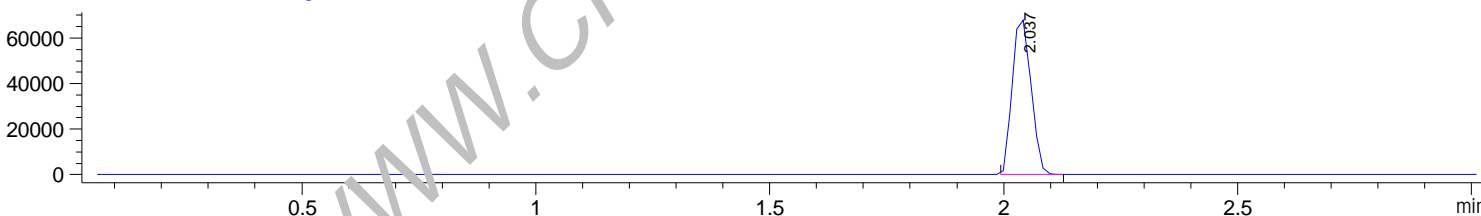
*DAD1 B, Sig=254,4 Ref=off



MSD1 TIC, MS File ES-API, Pos, Scan, Frag: 70



Ion 811, MSD1 811, Target Mass 810 +H Positive, TIC: 810.7:811.7

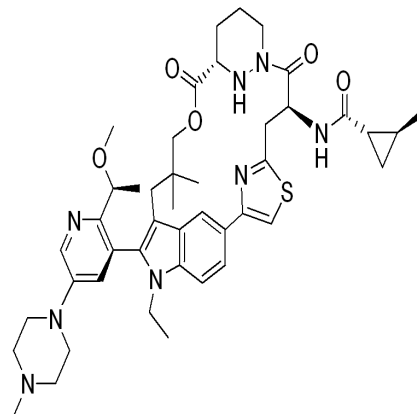


Integration Results for DAD1 A, Sig=214,4 Ref=off

RetTim	Width	Area	Height	Area%
2.04	0.02	488.66	503.34	100.00

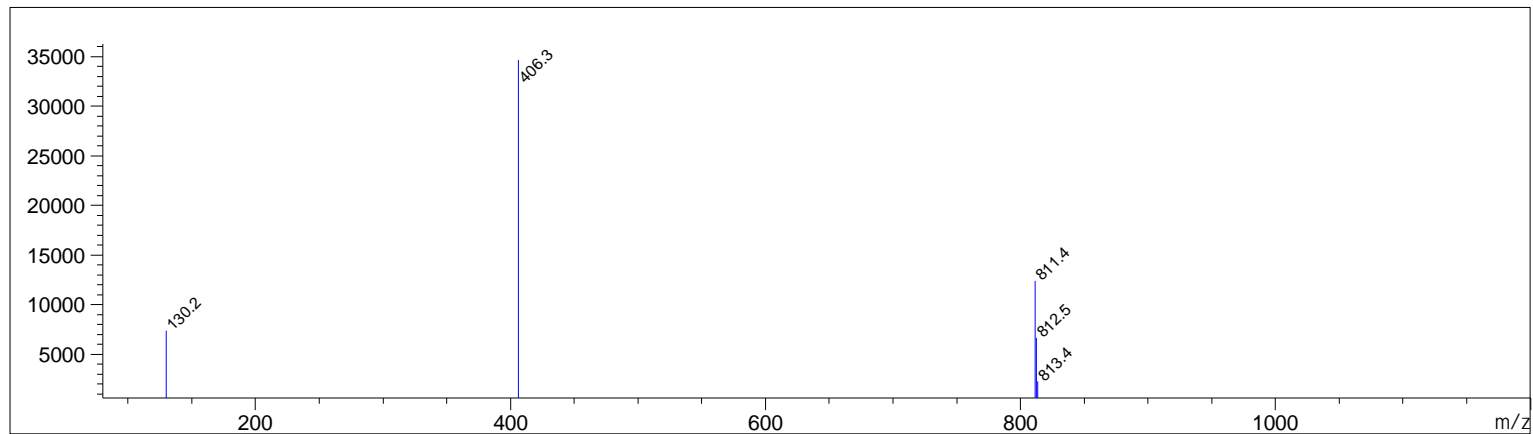
Integration Results for DAD1 B, Sig=254,4 Ref=off

RetTim	Width	Area	Height	Area%
2.04	0.01	593.20	615.39	100.00



Ret. Time: 2.04

<<<< POSITIVE SPECTRA >>>>



WWW.CHEMIETEK.COM