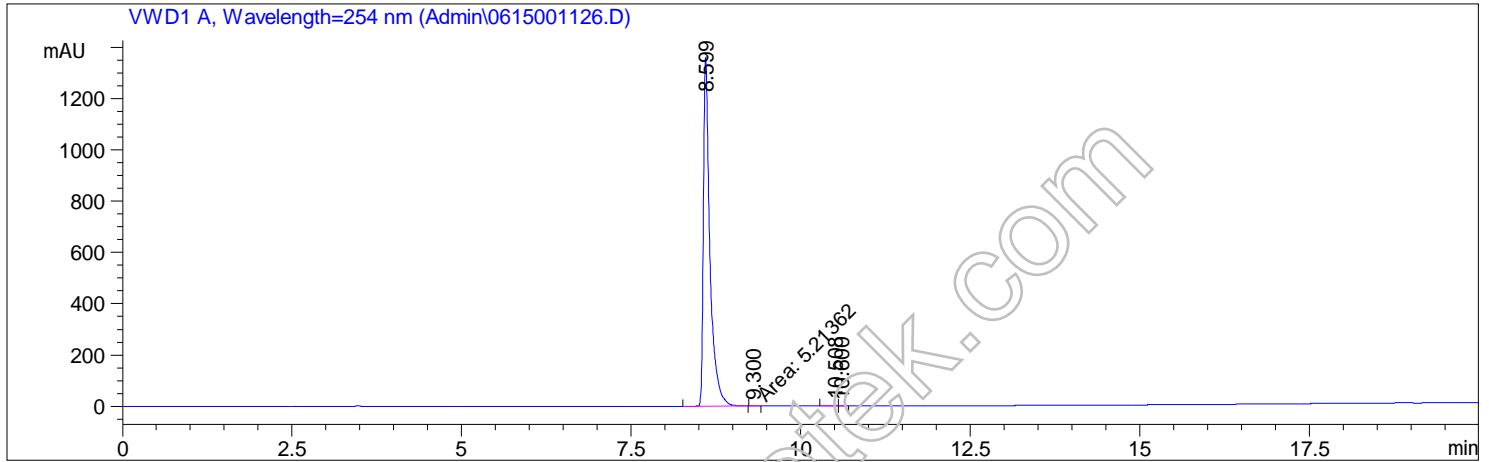




=====
 Acq. Operator : Admin
 Acq. Instrument : instr1

Location : Vial 11

Acq. Method : C:\CHEM32\1\METHODS\DEF_LC.M



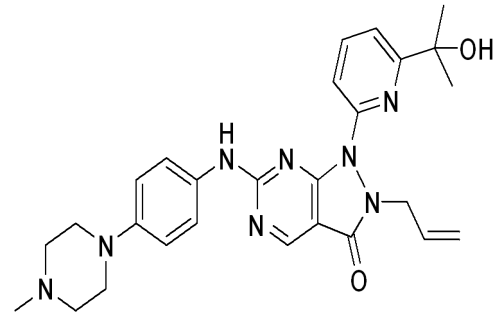
=====
 Area Percent Report
 =====

Sorted By : Signal
 Multiplier: : 1.0000
 Dilution: : 1.0000
 Use Multiplier & Dilution Factor with ISTDs

Signal 1: VWD1 A, Wavelength=254 nm

Peak #	RetTime [min]	Type	Width [min]	Area mAU*s	Height [mAU]	Area %
1	8.599	BV	0.1000	9284.65430	1360.07251	99.7236
2	9.300	MM	0.0893	5.21362	9.72603e-1	0.0560
3	10.508	BV	0.0742	9.80056	1.96401	0.1053
4	10.600	VV	0.0888	10.72295	1.71938	0.1152

Totals : 9310.39143 1364.72851



=====
 *** End of Report ***