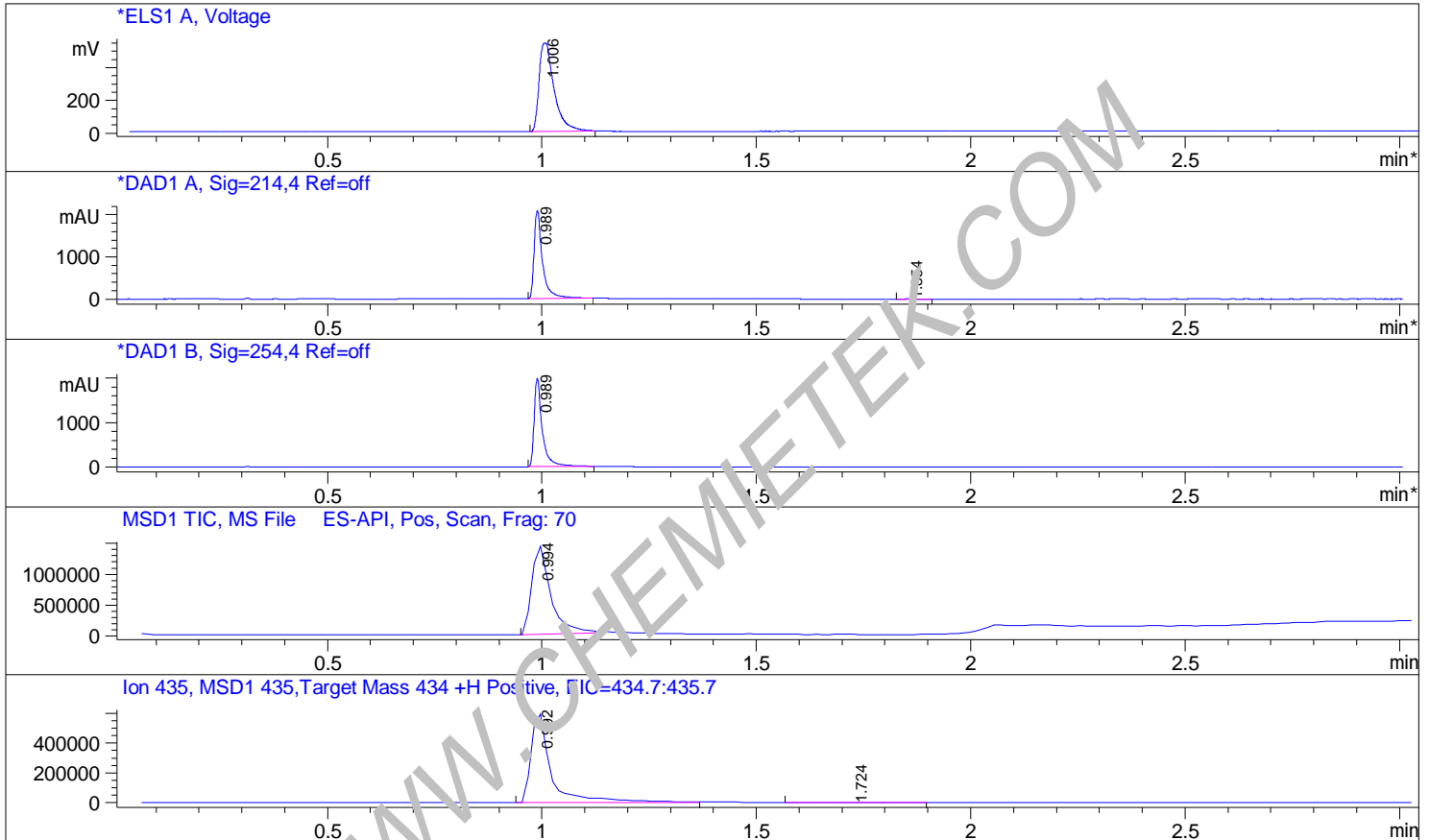


File D:\DATA\A02\MONITOR\LEE-011-01-04347-LCMSA034.D

Sample Name : LEE-011-01
 Acq. Operator : A02-Monitor
 Spec. Reported : MS Integration
 Acq. Method : D:\METHODS\1-POS-MON.M
 Analysis Method : D:\METHODS\1-POS-MON.M
 Sample Info : Easy-Access Method: '1-POS-MON' 434.00
 Method Info : Mobile Phase: A: water(0.01%TFA) B: ACN(0.01%TFA)
 Gradient: 5%-95% B in 1.3min
 Flow Rate: 2ml/min
 Column: Sunfire C18, 4.6*50mm,3.5um
 Oven Temperature: 50 C
 MS" ESI-POS Mass 103-1000



Integration Results for ELS1 A, Voltage

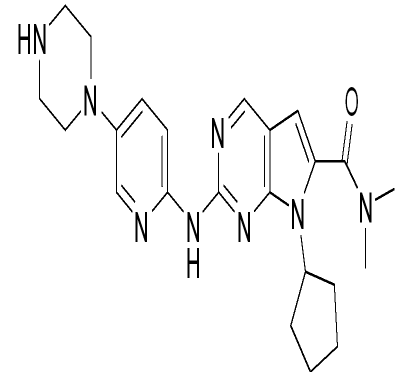
RetTim	Width	Area	Height	Area%
1.01	0.03	1322.94	541.22	100.00

Integration Results for DAD1 A, Sig=214,4 Ref=off

RetTim	Width	Area	Height	Area%
0.99	0.02	2845.87	2081.86	99.51
1.85	0.03	13.37	7.05	0.49

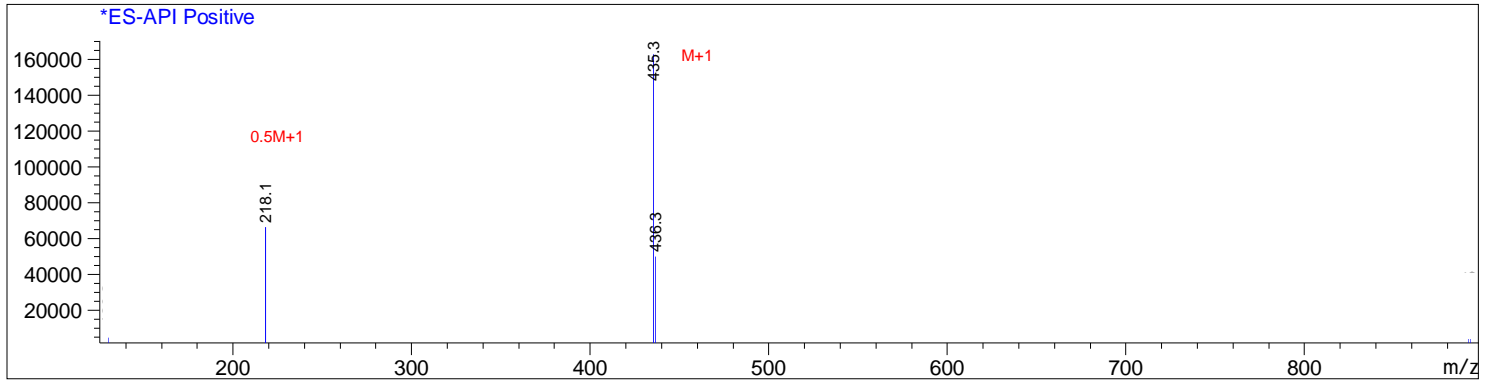
Integration Results for DAD1 B, Sig=254,4 Ref=off

RetTim	Width	Area	Height	Area%
0.99	0.02	2627.61	1985.02	100.00



Ret. Time: 0.99

<<<< POSITIVE SPECTRA >>>>



WWW.CHEMIETEK.COM