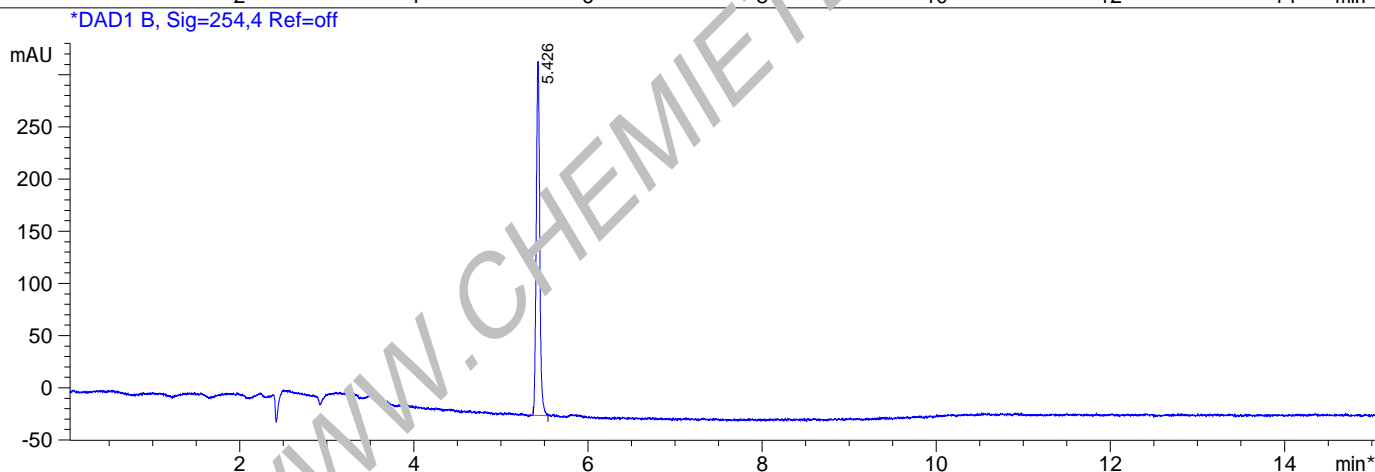
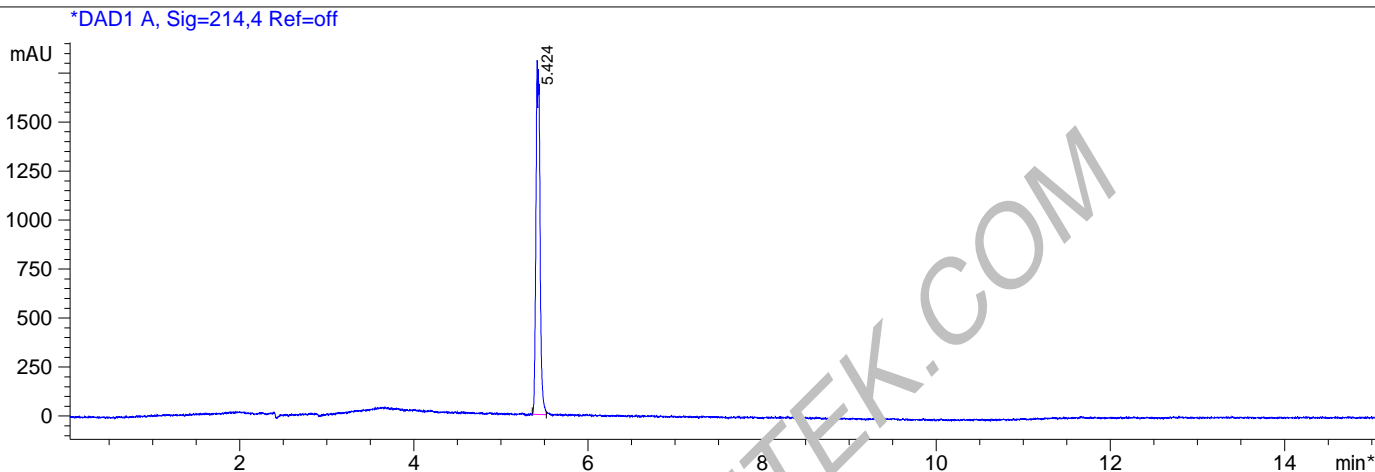
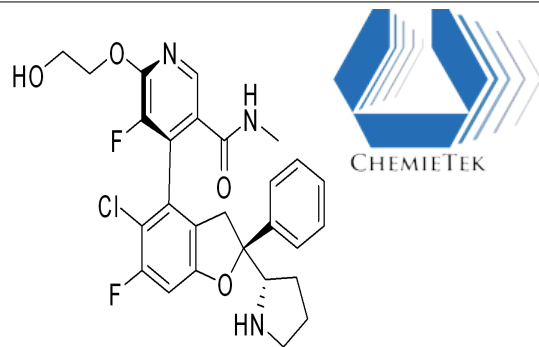


File D:\DATA\ADMIN\MONITOR\IAG-933-01-945-LCMSA029.D

Sample Name : IAG-933 Lot 01 (CHEMIETEK)
 Acq. Operator : ADMIN-MONITOR
 Spec. Reported : Default
 Acq. Method : D:\METHODS\2-HPLC.M
 Analysis Method : D:\METHODS\2-HPLC.M
 Sample Info : CHEMIELAB Method: '2-HPLC.M'
 Method Info : Column: C18, 4.6*150mm, 3.5um
 Mobile phase: H2O(0.01%TFA) (A) / ACN(0.01%TFA)(B)
 Elution program: Gradient from 5 to 95% of B in 8min at 1ml/min
 Temperature: 40 °C
 Detection: UV (214 , 4 nm) and MS (ESI, Pos mode ,110 to 800 amu)



Integration Results for DAD1 A, Sig=214,4 Ref=off

| RetTim | Width | Area | Height | Area% |
|--------|-------|---------|---------|--------|
| 5.42 | 0.05 | 5814.67 | 1687.59 | 100.00 |

Integration Results for DAD1 B, Sig=254,4 Ref=off

| RetTim | Width | Area | Height | Area% |
|--------|-------|--------|--------|--------|
| 5.43 | 0.04 | 953.76 | 339.30 | 100.00 |