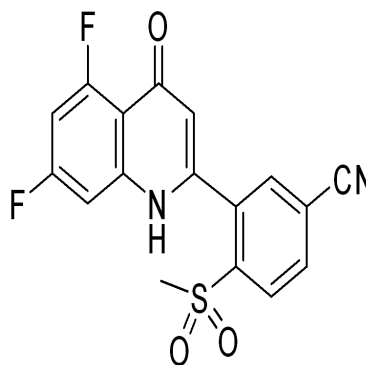
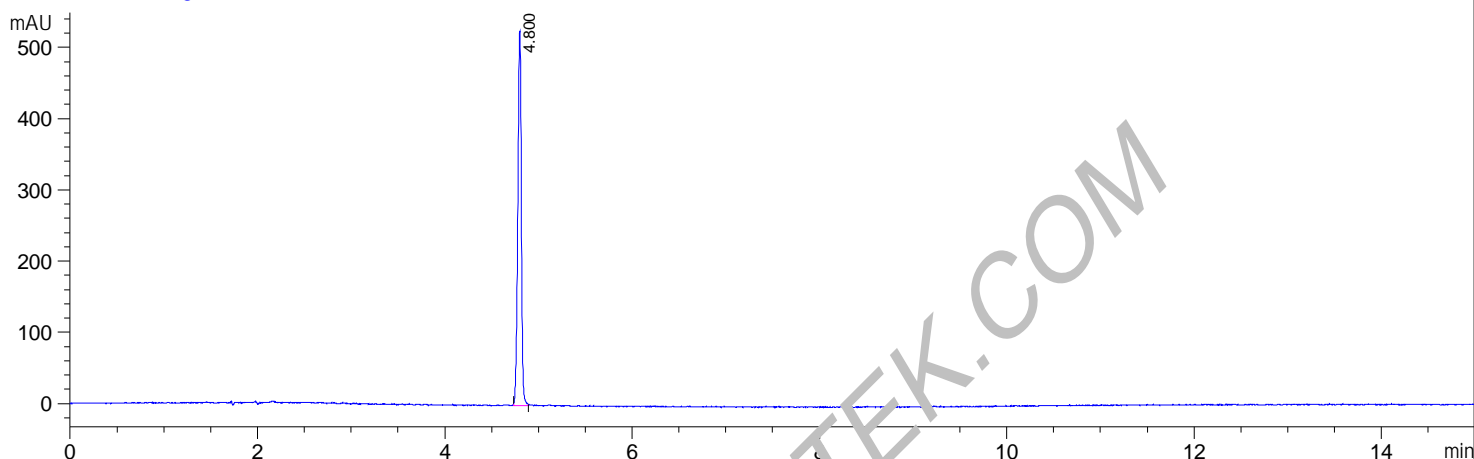


File D:\DATA\ADMIN\MONITOR\FX-909-01-955-LCMSA029.D

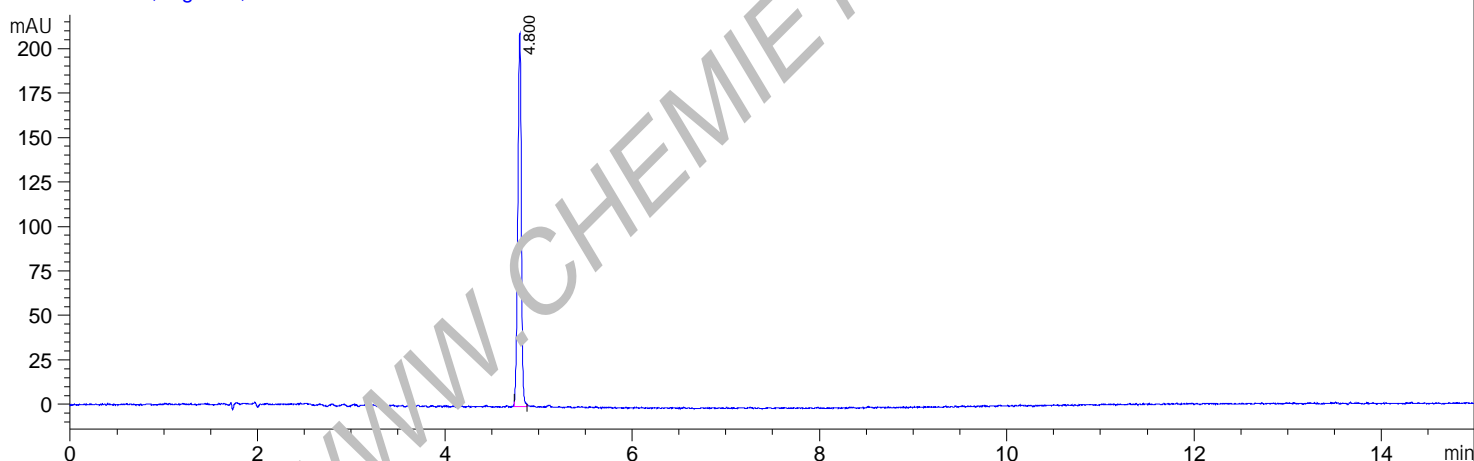
Sample Name : FX-909 Lot 01 (CHEMIETEK)  
Acq. Operator : ADMIN-MONITOR  
Spec. Reported : Default  
Acq. Method : D:\METHODS\2-HPLC.M  
Analysis Method : D:\METHODS\2-HPLC.M  
Sample Info : CHEMIELAB Method: '2-HPLC.M'  
Method Info : Column: C18, 4.6\*150mm, 3.5um  
Mobile phase: H2O(0.01%TFA) (A) / ACN(0.01%TFA)(B)



DAD1 A, Sig=214,4 Ref=off



DAD1 B, Sig=254,4 Ref=off



Integration Results for DAD1 A, Sig=214,4 Ref=off

RetTim	Width	Area	Height	Area%
4.80	0.04	1381.67	524.72	100.00

Integration Results for DAD1 B, Sig=254,4 Ref=off

RetTim	Width	Area	Height	Area%
4.80	0.04	550.22	209.52	100.00