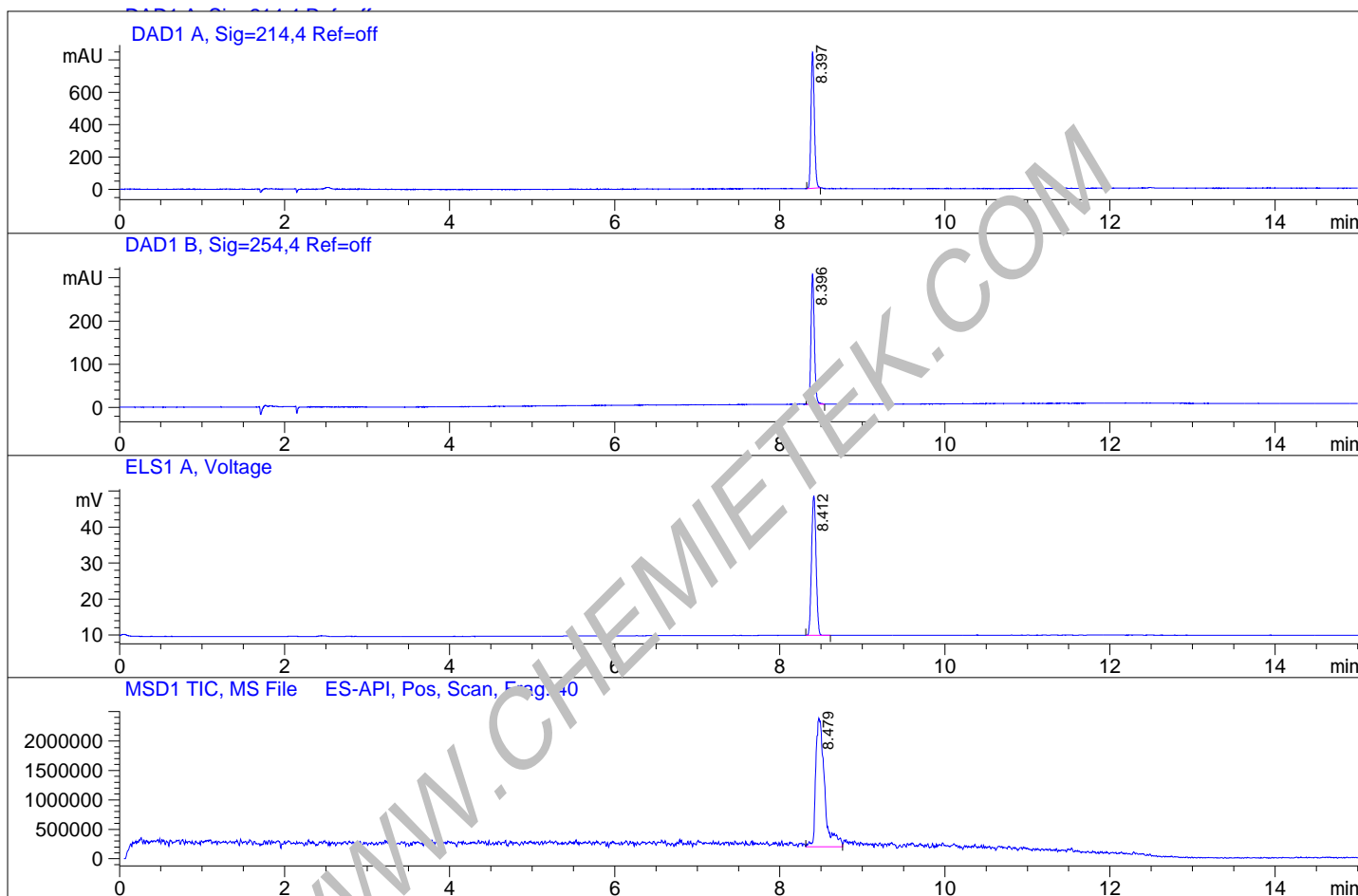


File CTK\SP-0019606-DS-9300-LOT02-LCMSA 045.D Tgt Mass (EZX): 501.00



**Sample Name** : SP-0019606-DS-9300 LOT 02  
**Acq. Operator** : Default 3 product  
**Spec. Reported** : MS Integration  
**Acq. Method** : C:\Chem32\1\METHODS\HPLC-B-MS.M  
**Analysis Method** : C:\CHEM32\1\METHODS\HPLC-B-MS.M  
**Sample Info** : Easy-Access Method: 'HPLC-B-MS.M' 501.00  
**Method Info** : Column: Waters XBridge C18: 150 mm\*4.6 mm\*3.5 um  
 Mobile Phase: A: Water (0.01 mol/L NH<sub>4</sub>HCO<sub>3</sub>) B:ACN;  
 Gradient: B from 5% to 95% for 10.0 min and hold 95% for 5.0 min;  
 Flow Rat:1.0 mL/min;  
 Column Temperature: 40 °C



## Integration Results for DAD1 A, Sig=214,4 Ref=off

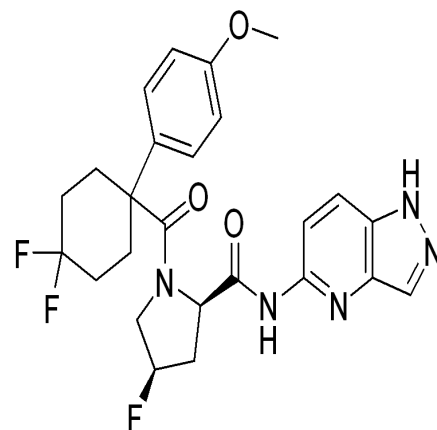
RetTim	Width	Area	Height	Area%
8.40	0.04	2363.07	844.12	100.00

## Integration Results for DAD1 B, Sig=254,4 Ref=off

RetTim	Width	Area	Height	Area%
8.40	0.04	852.34	301.65	100.00

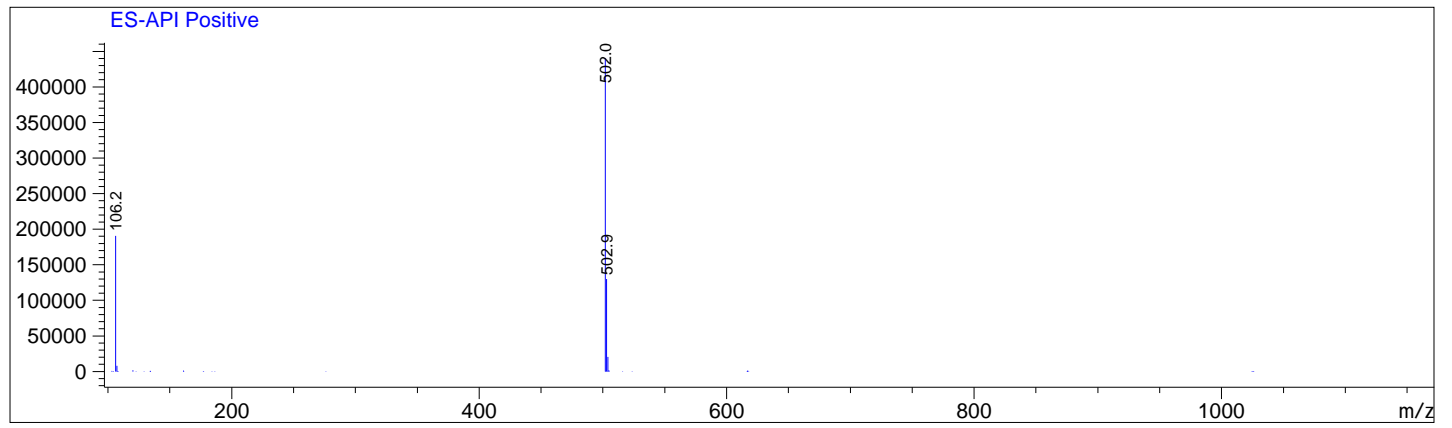
## Integration Results for ELS1 A, Voltage

RetTim	Width	Area	Height	Area%
8.41	0.06	147.56	38.71	100.00



Ret. Time: 8.48

<<<< POSITIVE SPECTRA >>>>



WWW.CHEMIETEK.COM