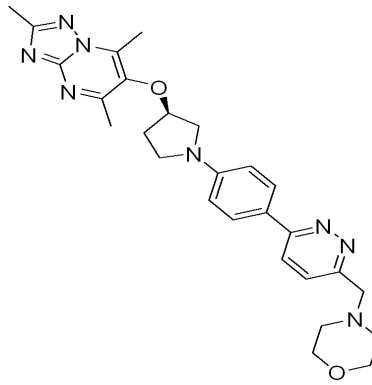


HPLC Report

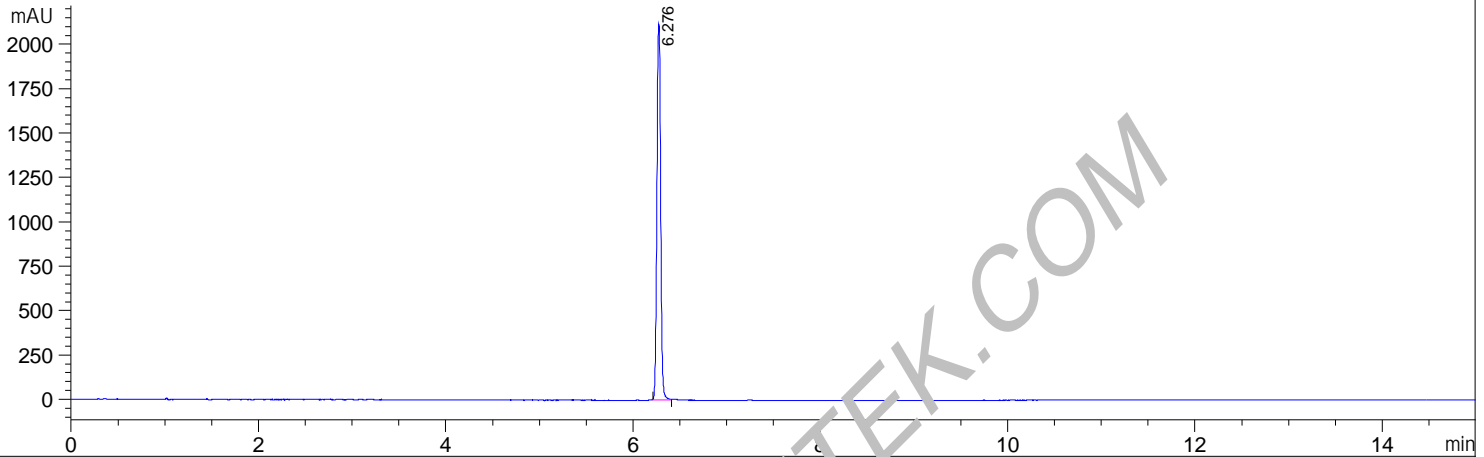
File D:\DATA\T336\MONITOR\AZD-0095-01-11-LCMSA009.D

Acq. Method : D:\METHODS\Default  
Analysis Method : D:\METHODS\Default  
Sample Info : Easy-Access Method: 'Default' 500.00  
Method Info : Column:XBRIDGE C18 (4.6x 150 mm, 3.5um)

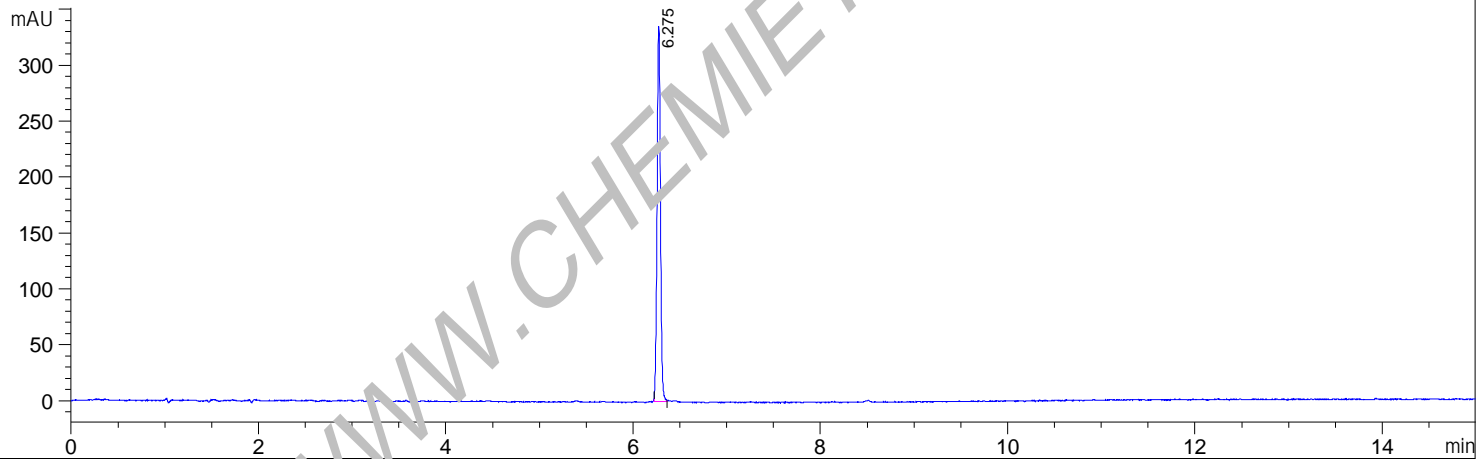


Mobile phase : A : Water (10mmolNH4HCO3) B: ACN  
Elution program: Gradient from 10 to 95% of B in 8 min at 1 ml/min  
Column Temperature: 45 °C  
Detection: UV (214 , 4 nm)

DAD1 A, Sig=214,4 Ref=off



DAD1 B, Sig=254,4 Ref=off



Integration Results for DAD1 A, Sig=214,4 Ref=off

RetTim	Width	Area	Height	Area%
6.28	0.04	5936.89	2113.71	100.00

Integration Results for DAD1 B, Sig=254,4 Ref=off

RetTim	Width	Area	Height	Area%
6.28	0.04	841.10	335.26	100.00