

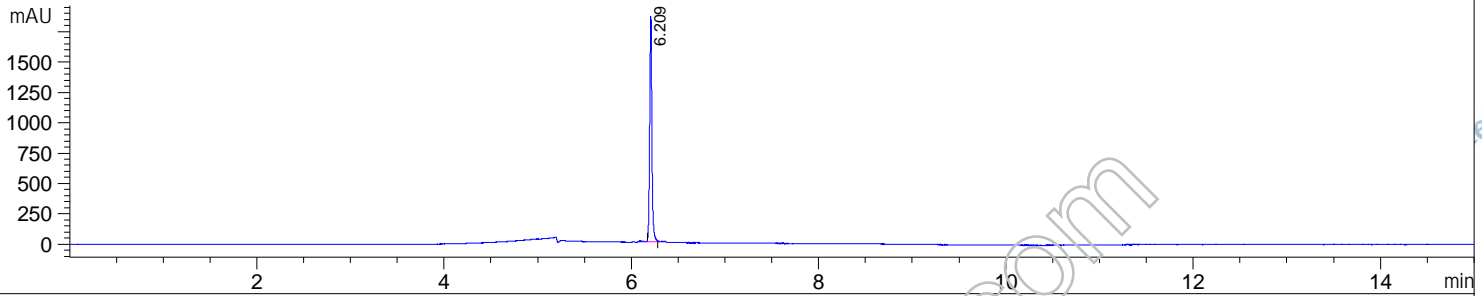
File D:\DATA\A02\MONITOR\TAS6417-01-340-LCMSA031.D

Sample Name : TAS6417-01 CHEMIETEK
 Acq. Operator : A02-ADMIN
 Spec. Reported : MS Integration
 Acq. Method : D:\METHODS\QC-HPLC-15MIN.M
 Analysis Method : D:\METHODS\QC-HPLC-15MIN.M
 Sample Info : QC 15min Method: 'QC-HPLC-15MIN'

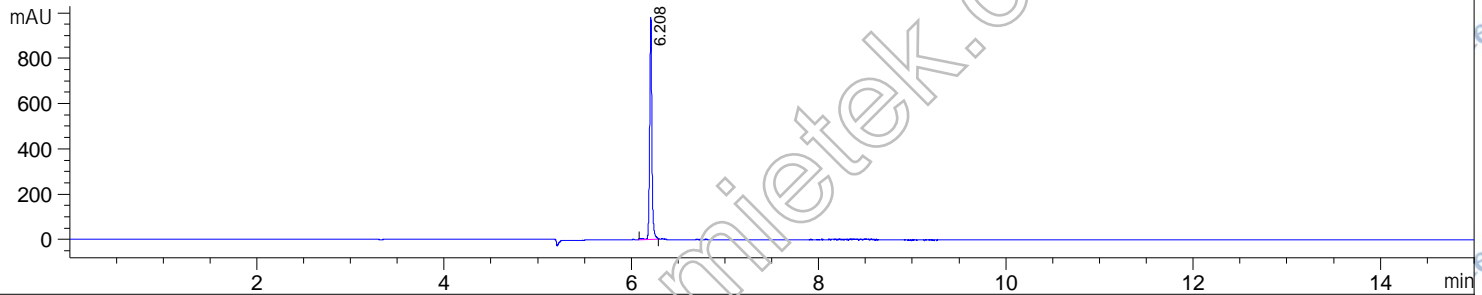
Tgt Mass(EZX) :
 Location : P1-A-01
 Inj : 1
 Inj Volume : 1 ul



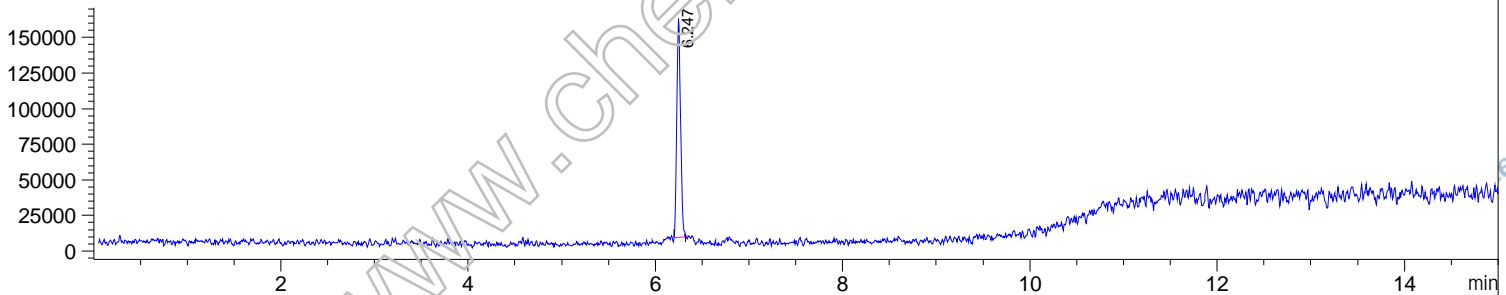
DAD1 A, Sig=214,4 Ref=off



DAD1 B, Sig=254,4 Ref=off



MSD1 TIC, MS File ES-API, Pos, Scan, Frag: 70

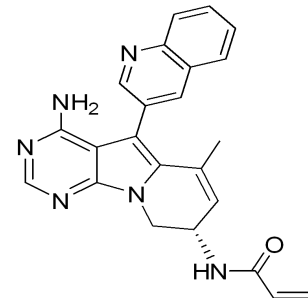


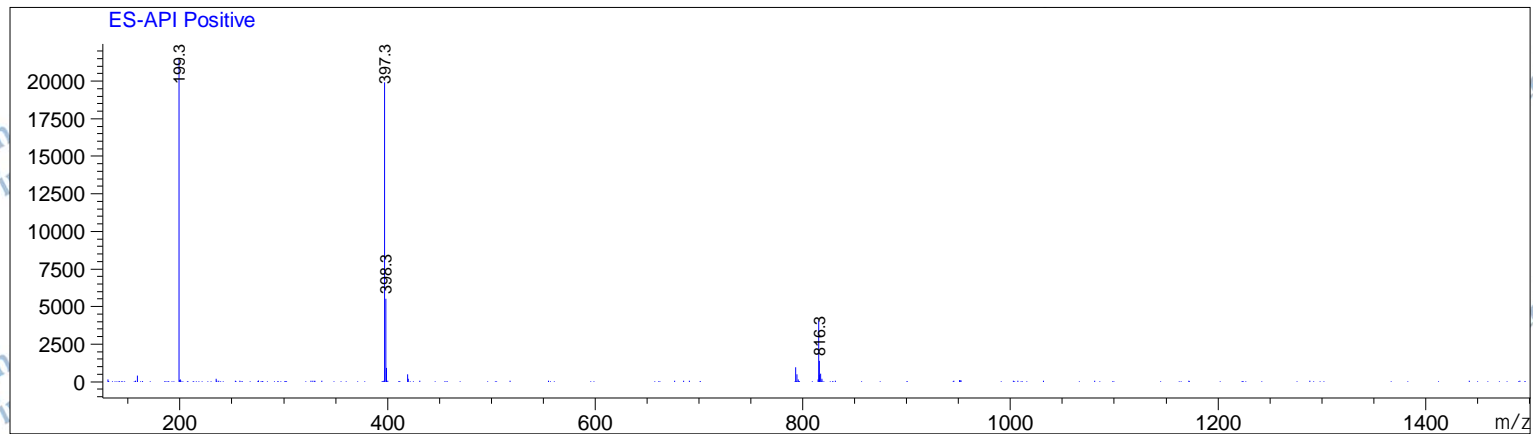
Integration Results for DAD1 A, Sig=214,4 Ref=off

RetTim	Width	Area	Height	Area%
6.21	0.03	3059.24	1843.77	100.00

Integration Results for DAD1 B, Sig=254,4 Ref=off

RetTim	Width	Area	Height	Area%
6.21	0.03	1611.03	975.96	100.00





chemietek.com
info@chemietek.com

chemietek.com
info@chemietek.com

chemietek.com
info@chemietek.com

chemietek.com
info@chemietek.com

chemietek.com
info@chemietek.com

chemietek.com
info@chemietek.com

chemietek.com
info@chemietek.com

chemietek.com
info@chemietek.com

chemietek.com
info@chemietek.com

chemietek.com
info@chemietek.com

chemietek.com
info@chemietek.com

chemietek.com
info@chemietek.com

chemietek.com
info@chemietek.com

chemietek.com
info@chemietek.com

chemietek.com
info@chemietek.com

chemietek.com
info@chemietek.com

chemietek.com
info@chemietek.com

chemietek.com
info@chemietek.com

chemietek.com
info@chemietek.com

chemietek.com
info@chemietek.com

chemietek.com
info@chemietek.com

chemietek.com
info@chemietek.com

chemietek.com
info@chemietek.com

chemietek.com
info@chemietek.com

chemietek.com
info@chemietek.com

chemietek.com
info@chemietek.com

chemietek.com
info@chemietek.com

chemietek.com
info@chemietek.com